

## **ADDENDUM NO. 4**

**October 8, 2024**

**Town of Uxbridge, MA**

### **Ironstone Road, Carney Street, and Aldrich Street Bridge Preservations Contract No. 2024-12**

The following changes and additional information are hereby made part of the Contract Documents. Bidders are advised that this Addendum must be acknowledged in the appropriate space provided on the Bid Form.

#### **ADDENDUM DATES**

Addendums 1-3 did not list issue dates. Below is the date that each previous addendum was issued:

- Addendum 1 – 09/19/2024
- Addendum 2 – 09/24/2024
- Addendum 3 – 10/02/2024

#### **CONSTRUCTION PLANS**

Carney Street Structural Details Sheet 2 (Sheet 6 of 12 Bridge No. U-02-070(C4E))

- Moment Slab Section, Note 1 revised.

#### **SPECIFICATIONS**

- Approx. Qty revised for Item 905. on page 00300 – 13
- Approx. Qty revised for Item 910.1 on page 00300 - 13

#### **QUESTIONS AND ANSWERS**

*Question 1: Item 905 4000psi, 3/8" - Please clarify where the 122CY is located as item 127.12 Reinforced Concrete Excavation is only 122CF.*

Answer 1: There was an error in the engineer's estimate. The total quantity for Item 905 should be 18 CY. Bid Form has been updated and posted as an addendum.

*Question 2: The plans indicate that all concrete shall be 4000 psi - 1 1/2" - 565. Please clarify where item 904.3-5000 psi, 3/4" 685 HP is located if all concrete is 4000 psi - 1 1/2" - 565.*

Answer 2: The bridge cover sheet for each bridge provides a breakdown of where each type of concrete is being used. The moment slabs for each bridge shall use 5000 PSI, 3/4 IN. 685 HP CEMENT CONCRETE. Carney Street Bridge Improvements Sheet 2 has been revised and issued as an addendum.

*Question 3: Item 996 Membrane Waterproofing for waterproofing decks is not located on the drawings please clarify where this is.*

Answer 3: The transverse bridge section on Ironstone Street Bridge Improvements plans calls for membrane waterproofing for bridge decks. The moment slab section on Aldrich Street Bridge Improvements plans calls for membrane waterproofing over the moment slab.

*Question 4: Please clarify the pay limits for Item 140 Bridge Excavation since it is anticipated that the excavation for the new wingwalls is open cut.*

Answer 4: Item 140. Bridge Excavation is for Ironstone Road and Carney Street moment slabs. Item 140.1 Bridge Excavation Within Cofferdam is for the Aldrich Street Wingwalls.

*Question 5: Please clarify where item 140.1 Bridge Excavation within Cofferdam is located.*

Answer 5: Please see answer to Question 4.

### **Attachments**

Contract Book

- Pg 00300 – 13

Contract Plans

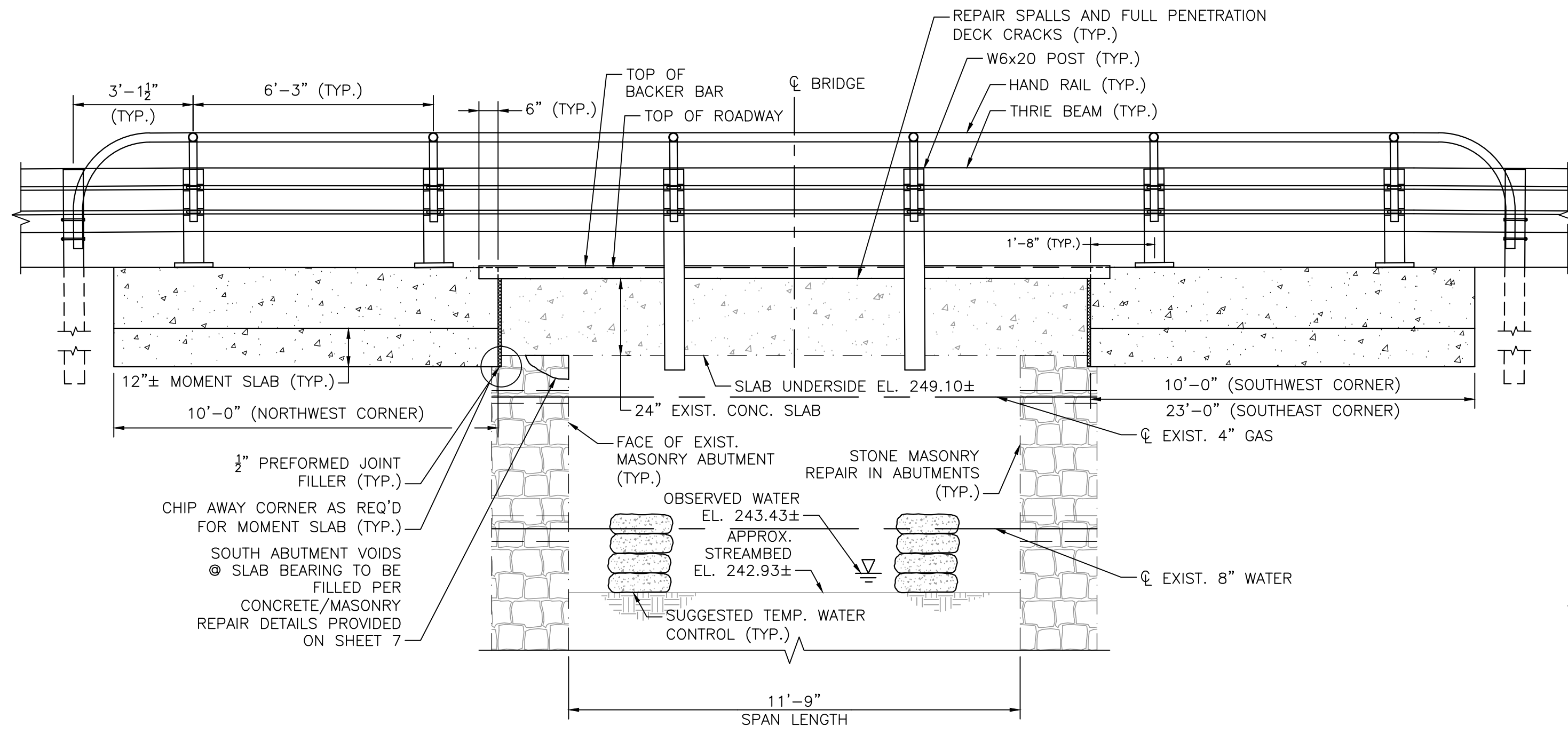
- Carney Street Structural Details Sheet 2 (Sheet 6 of 12 Bridge No. U-02-070(C4E))

**END OF ADDENDUM NO. 4**

## BID ITEMS (Continued)

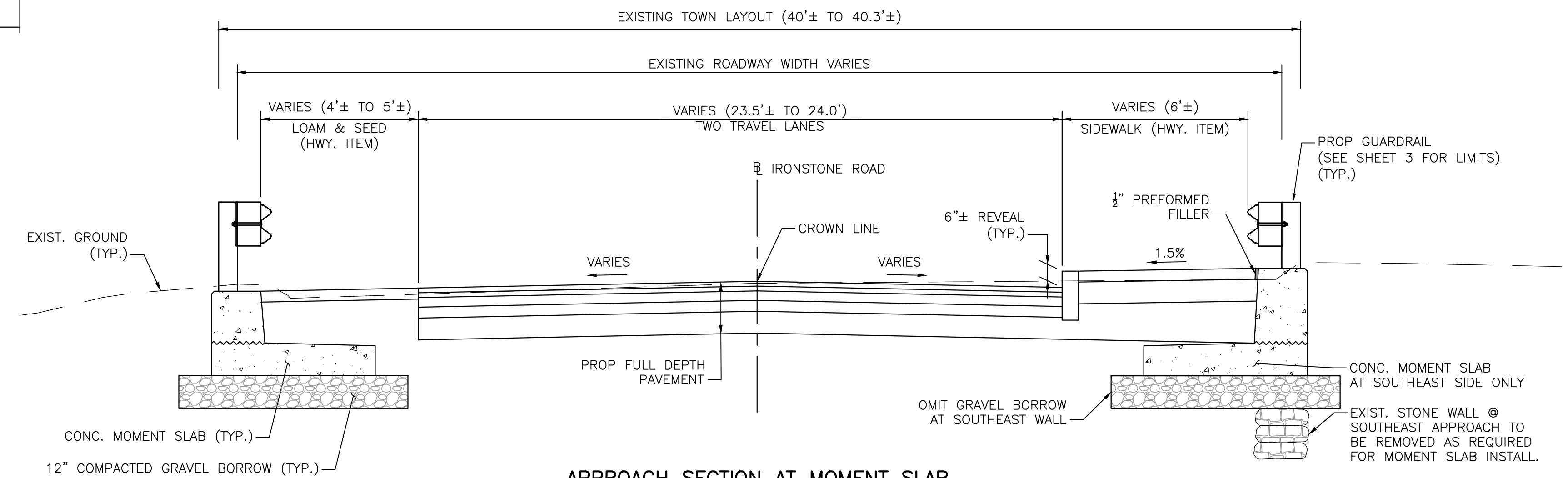
Item No.	Approx. Qty.	Item Description	Unit Price		Amount	
			Dollars	Cents	Dollars	Cents
905.	18	4000 PSI, 3/8 INCH, 610 CEMENT CONCRETE AT				
		Per Cubic Yard				
908.	44	CEMENT FOR POINTING At				
		Per Bag				
909.2	330	CEMENTITIOUS MORTAR FOR PATCHING AT				
		Per Square Foot				
910.1	11,200	STEEL REINFORCEMENT FOR STRUCTURES – EPOXY COATED At				
		Per Pound				
966.	506	MEMBRANE WATERPROOFING FOR BRIDGE DECK REPAIRS AT				
		Per Square Foot				
970.	148	DAMP-PROOFING AT				
		Per Square Yard				

10/8/2024 4:04 PM \\BETA-INC.COM\TR\TRANS\7545 - UXBRIDGE - SMALL BRIDGE CONTRACT\CONST SERVICES\BID PHASE\ADDENDUM\ATTACHMENTS\7545\_SR\STRUCTURAL\DETAILS\_ADDENDUM 4.DWG (BETA STB BW STB)



**WEST BRIDGE ELEVATION, LOOKING EAST**

SCALE:  $\frac{3}{8}'' = 1'-0''$

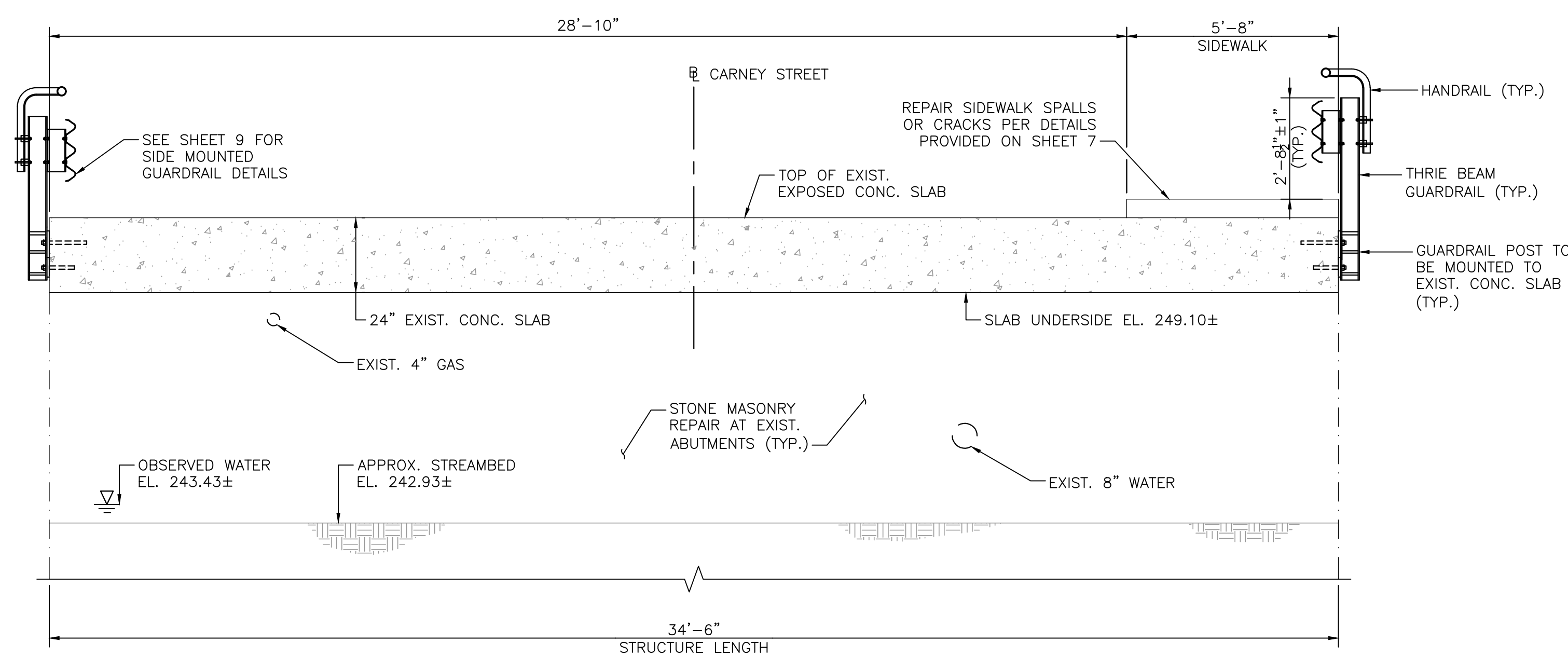


**APPROACH SECTION AT MOMENT SLAB**

NOT TO SCALE

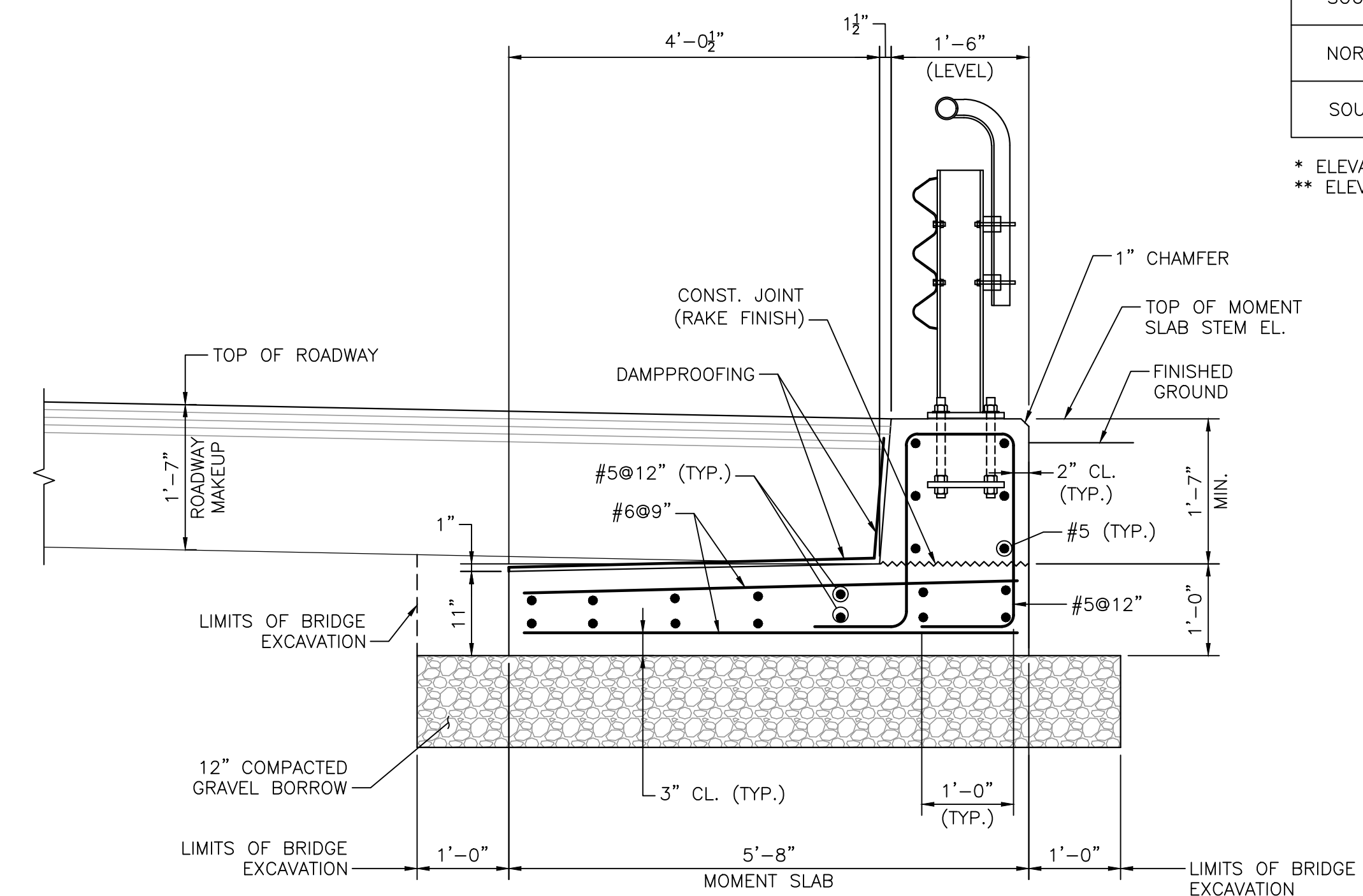
TOP OF MOMENT SLAB STEM ELEVATION		
LOCATION	STATION	ELEVATION
SOUTHWEST	0+64.6	251.41
	0+74.6	*
NORTHWEST	0+89.9	*
	0+99.9	250.94
SOUTHEAST	0+51.6	252.31
	0+74.6	**

\* ELEVATION TO MATCH TOP OF EXISTING CONCRETE BRIDGE DECK  
\*\* ELEVATION TO MATCH TOP OF EXISTING BRIDGE SIDEWALK



**TRANSVERSE BRIDGE SECTION**

SCALE:  $\frac{3}{8}'' = 1'-0''$



**NOTES:**

- ALL CONCRETE SHALL BE 5000 PSI,  $\frac{3}{4}$  IN. 685 HP CEMENT CONCRETE.
- MOMENT SLAB SECTION WITHOUT SIDEWALK SHOWN, SECTION WITH SIDEWALK SIMILAR.

**MOMENT SLAB SECTION**

SCALE:  $\frac{3}{8}'' = 1'-0''$

NUMBER	DATE	MADE BY	CHECKED BY	REVISIONS
	10/8/2024	JMR	TMW	Moment Slab Section, Note 1

DRAWN BY:	BN
DESIGNED BY:	TW
CHECKED BY:	TW



REGISTERED PROFESSIONAL	PREPARED BY	SUBCONSULTANT
-------------------------	-------------	---------------

SCALE	TITLE
AS SHOWN	<b>Carney Street Bridge Improvements Uxbridge, Massachusetts STRUCTURAL DETAILS</b>

BETA JOB NO.	7545
ISSUE DATE	
SHEET NO.	2
BRIDGE NO. U-02-070	

Sheet 6 of 12 Bridge No. U-02-070 (C4E)