



Maura Healey, Governor
Kimberley Driscoll, Lieutenant Governor
Monica Tibbits-Nutt, Secretary & CEO
Jonathan L. Gulliver, Highway Administrator



November 6, 2024

608930-128034

ADDENDUM NO. 3

To Prospective Bidders and Others on:

LAWRENCE
Federal Aid Project No. CMQ-003S(733)X
Lawrence Manchester Rail Corridor (LMRC) Rail Trail

PROPOSAL TO BE OPENED AND READ: TUESDAY, NOVEMBER 19, 2024 at 2:00 P.M

Transmitting changes to the Contract Documents as follows:

QUESTIONS AND RESPONSES: One page.

PLANS: Revised sheets 66 through 80 of 245.

Take note of the above, substitute revised sheets for originals, and acknowledge Addendum No. 3 in your Expedite Proposal file before submitting your bid.

Sincerely,

for

Eric M. Cardone, P.E.
Construction Contracts Engineer

HA
cc: Lawrence Cash, Project Manager

*** THIS PAGE IS INTENTIONALLY LEFT BLANK ***

LAWRENCE
Federal Aid Project No. CMQ-003S(733)X
Lawrence Manchester Rail Corridor (LMRC) Rail Trail

Questions and Responses

Addendum No.3, November 6, 2024

Question Set 1

S & R Corporation, e-mail dated November 1, 2024

Question 1)

On sheet No.67 Ornamental Light Poles are called out as bid item 812.993 on the bridge. However, on the bid item form there is no 812.993 item. Is this work part of the scope of work?

Response 1)

This item is part of the scope. Sheets 66-80 have been revised to clarify the call outs for the light pole bid items 821.992 and 821.993.

Question 2)

On Sheet No. 66 there is a note calling out 6 – 4” FRE conduit but on the bid item form there is no item for it. Can an item be added?

Response 2)

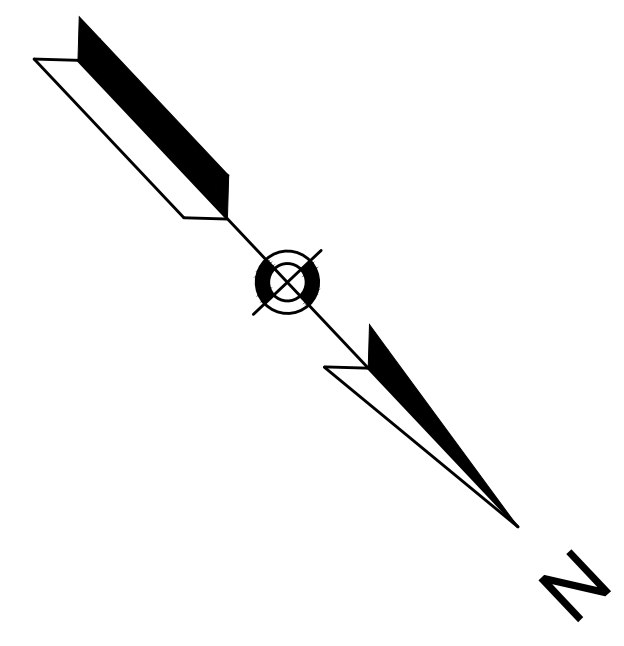
Sheets 66 and 67 have been revised to clarify that the 4” conduit on the Merrimack Bridge falls under bid item 804.41.

THIS PAGE IS INTENTIONALLY LEFT BLANK

**LAWRENCE
LMRC RAIL TRAIL**

STATE	FED. AID PROJ. NO.	SHEET NO.	TOTAL SHEETS
MA	CMQ-003S(733)X	66	245
PROJECT FILE NO.		608930	

UTILITY PLANS - 1 OF 16



EXISTING INVERT TABLE
 CB1
 RIM=50.98'
 SMH1
 RIM=50.16'
 INV.(a)=40.91
 INV.(b)=40.78
 INV.(c)=42.75

N/F
 NUNEZ, LLC
 BK/PG 11297/139
 5 - 7 MERRIMACK ST
 PL 15990
 122-26

PROJECT BEGIN
 STA 0+70.00
 N3080245.3219
 E746615.1764

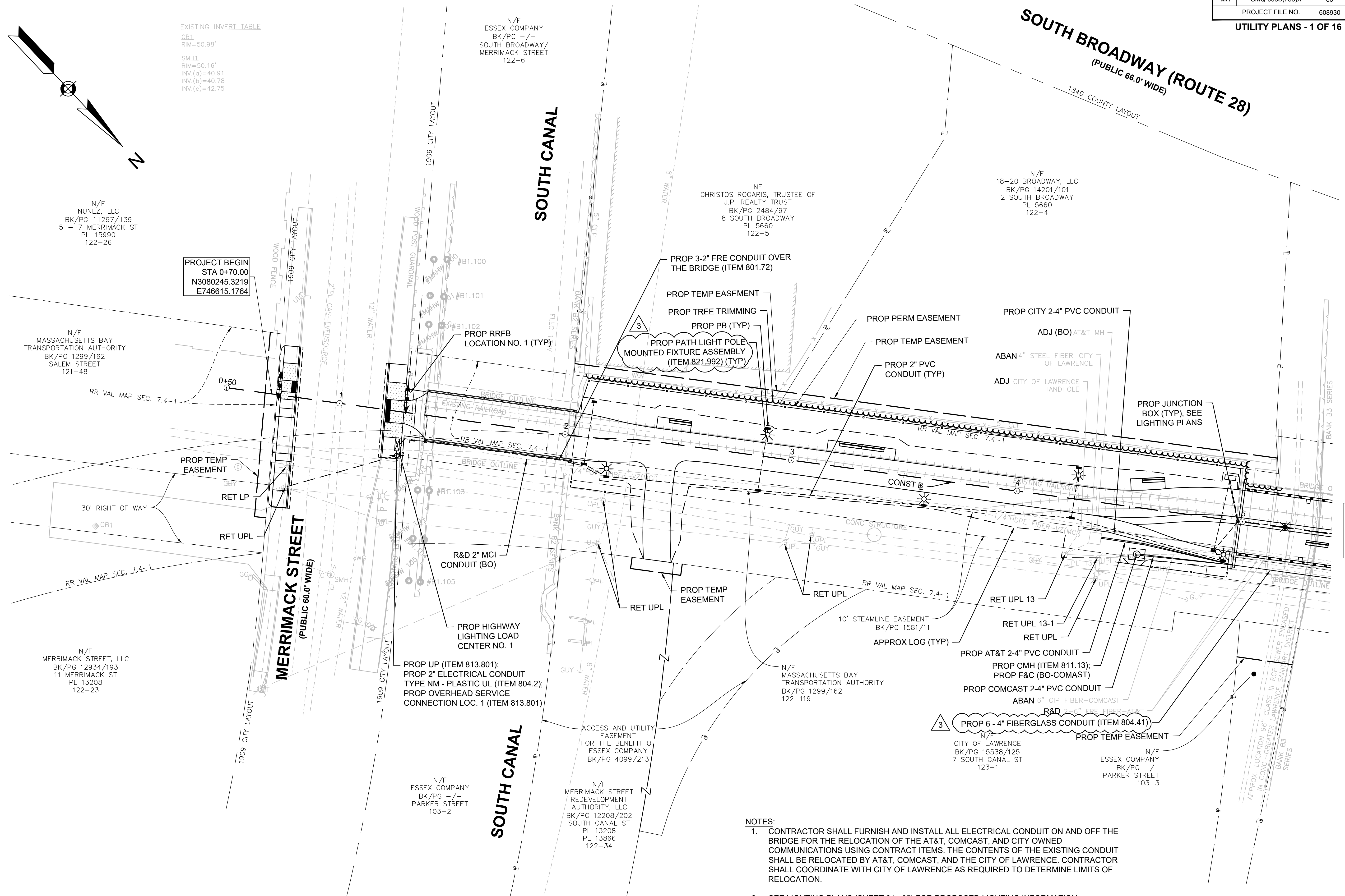
N/F
 MASSACHUSETTS BAY
 TRANSPORTATION AUTHORITY
 BK/PG 1299/162
 SALEM STREET
 121-48

N/F
 MERRIMACK STREET, LLC
 BK/PG 12934/193
 11 MERRIMACK ST
 PL 13208
 122-23

N/F
 ESSEX COMPANY
 BK/PG -/-
 SOUTH BROADWAY/
 MERRIMACK STREET
 122-6

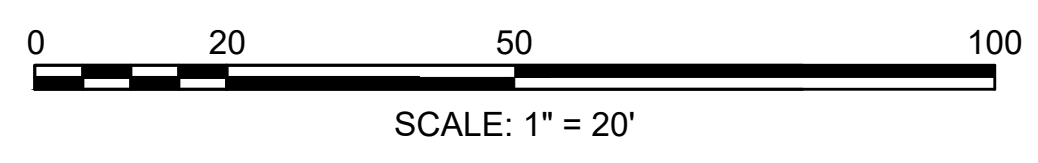
N/F
 CHRISTOS ROGARIS, TRUSTEE OF
 J.P. REALTY TRUST
 BK/PG 2484/97
 8 SOUTH BROADWAY
 PL 5660
 122-5

N/F
 18-20 BROADWAY, LLC
 BK/PG 14201/101
 2 SOUTH BROADWAY
 PL 5660
 122-4



CONTINUED ON
 SHEET NO. 67

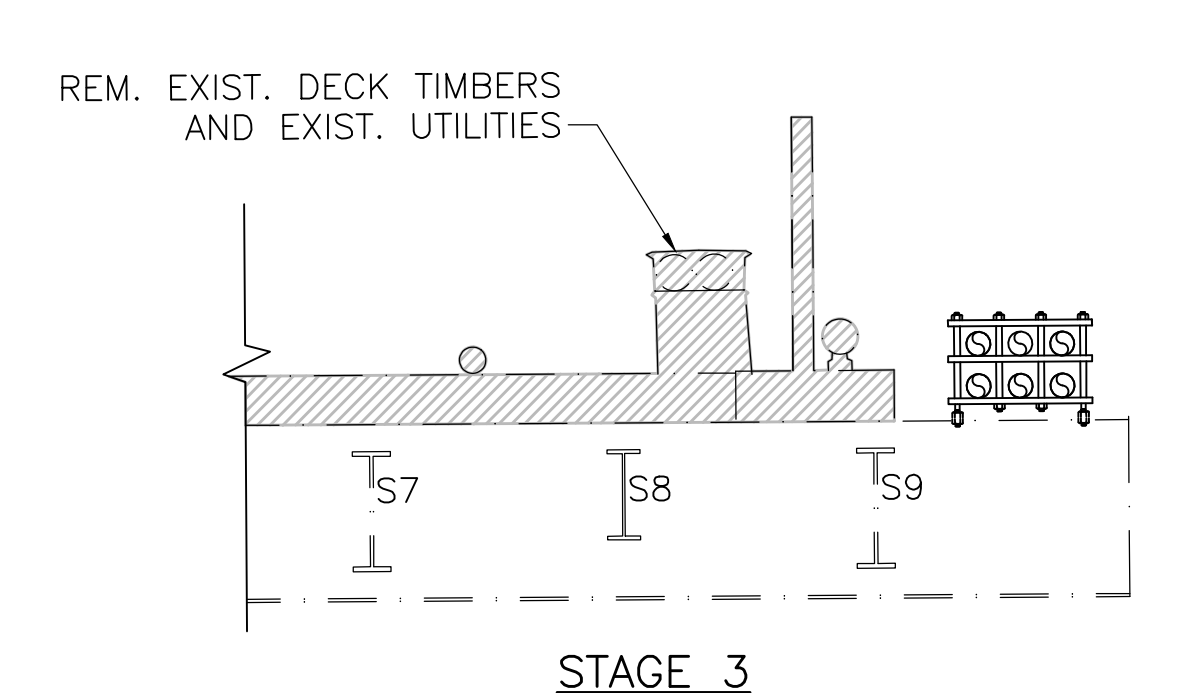
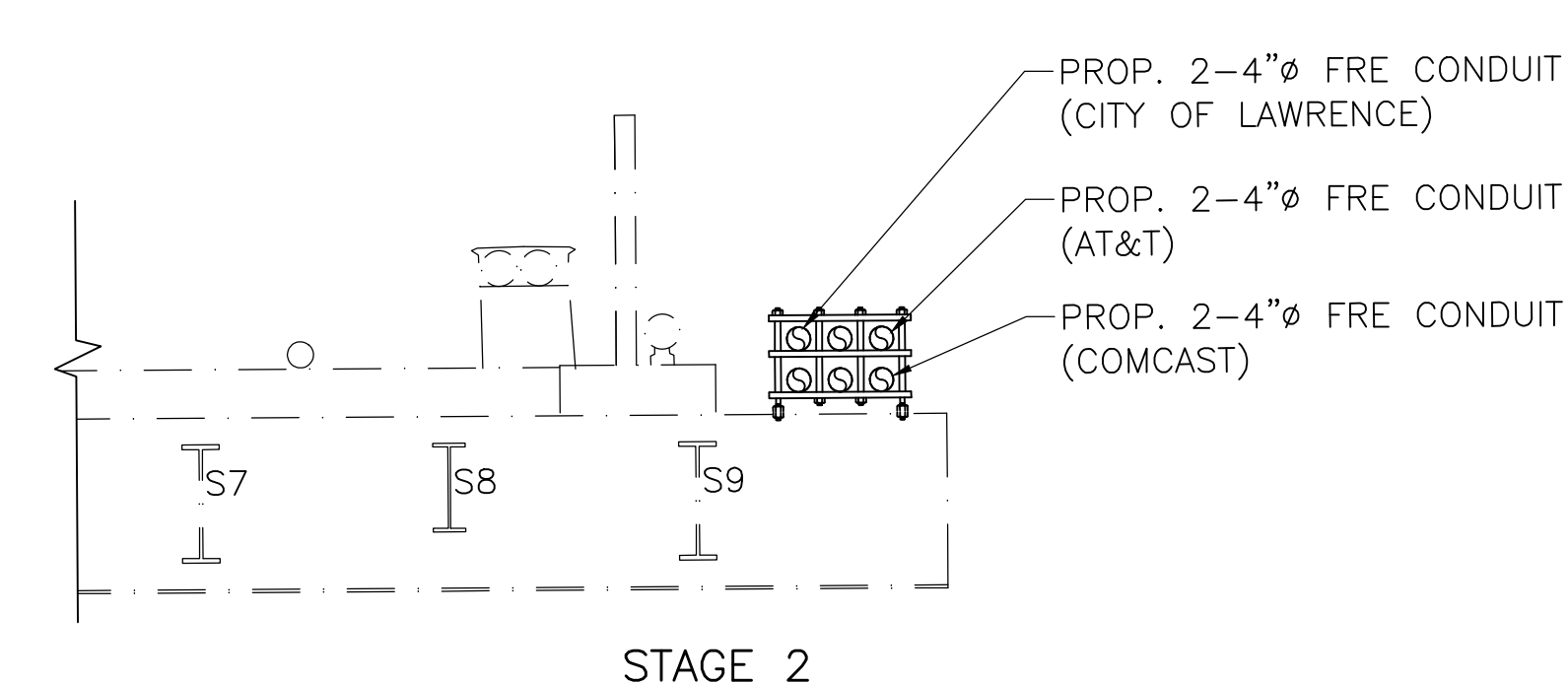
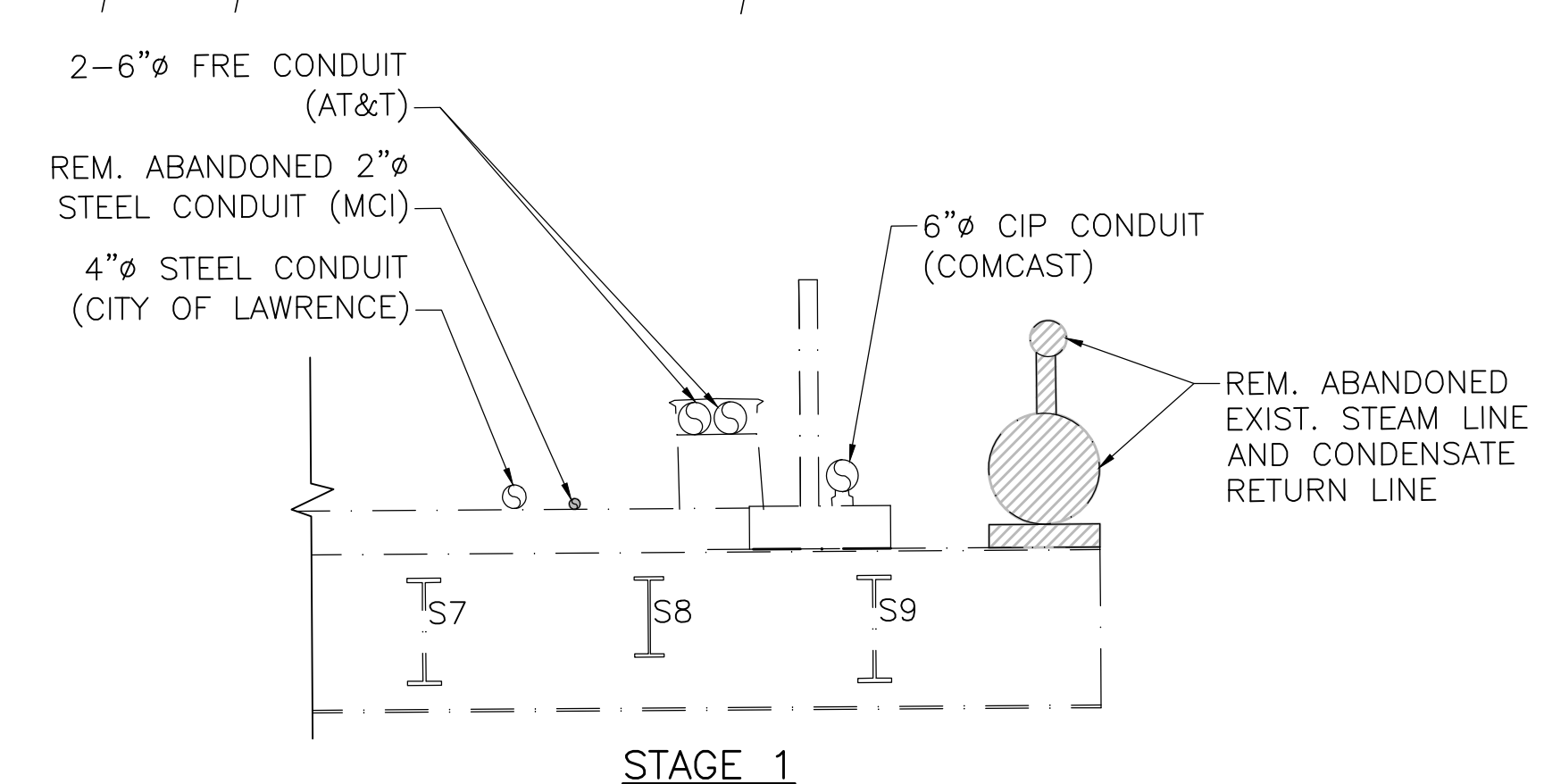
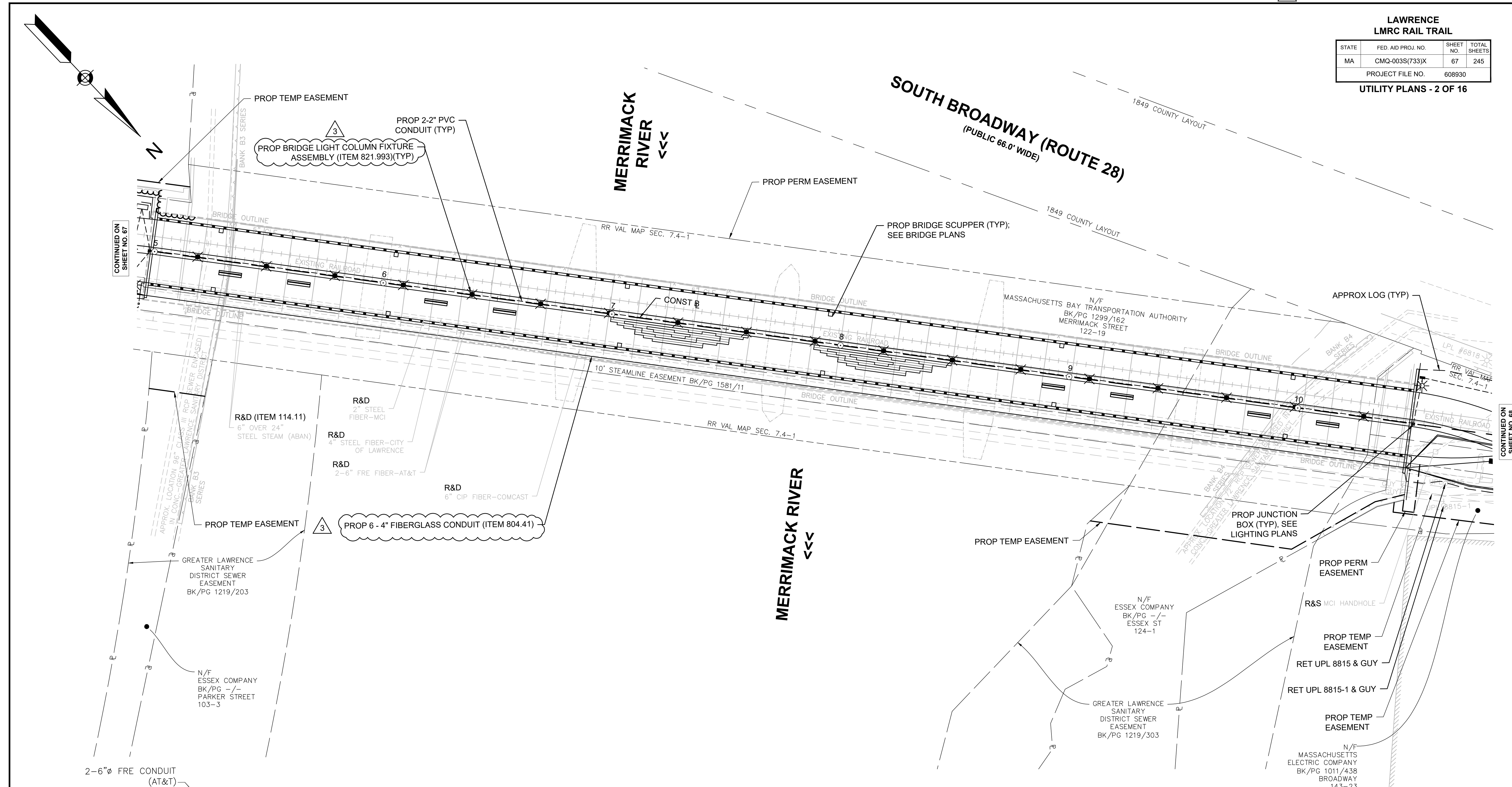
- NOTES:**
1. CONTRACTOR SHALL FURNISH AND INSTALL ALL ELECTRICAL CONDUIT ON AND OFF THE BRIDGE FOR THE RELOCATION OF THE AT&T, COMCAST, AND CITY OWNED COMMUNICATIONS USING CONTRACT ITEMS. THE CONTENTS OF THE EXISTING CONDUIT SHALL BE RELOCATED BY AT&T, COMCAST, AND THE CITY OF LAWRENCE. CONTRACTOR SHALL COORDINATE WITH CITY OF LAWRENCE AS REQUIRED TO DETERMINE LIMITS OF RELOCATION.
 2. SEE LIGHTING PLANS (SHEET 81 - 95) FOR PROPOSED LIGHTING INFORMATION.



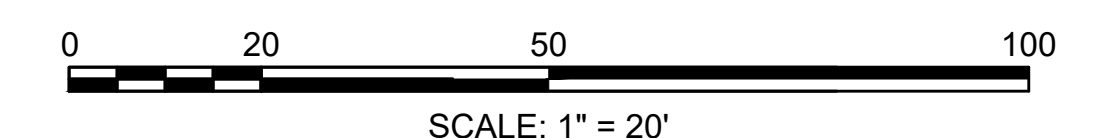
**LAWRENCE
LMRC RAIL TRAIL**

STATE	FED. AID PROJ. NO.	SHEET NO.	TOTAL SHEETS
MA	CMQ-003S(733)X	67	245
PROJECT FILE NO. 608930			

UTILITY PLANS - 2 OF 16



UTILITY RELOCATION DETAILS
 SCALE: 3/8" = 1'-0"



CONTINUED ON SHEET NO. 67

CONTINUED ON SHEET NO. 68

**LAWRENCE
LMRC RAIL TRAIL**

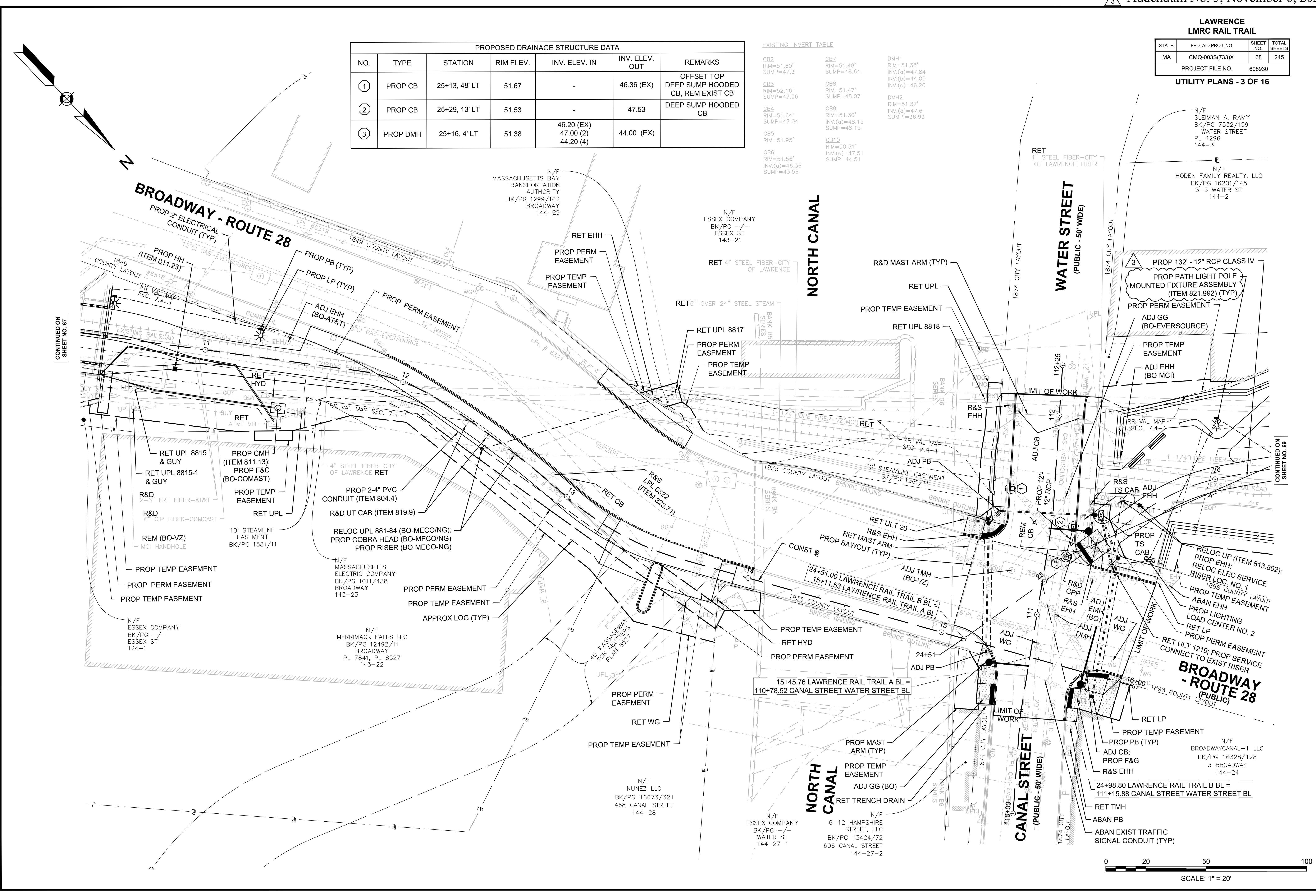
STATE	FED. AID PROJ. NO.	SHEET NO.	TOTAL SHEETS
MA	CMQ-003S(733)X	68	245
PROJECT FILE NO. 608930			

UTILITY PLANS - 3 OF 16

PROPOSED DRAINAGE STRUCTURE DATA						
NO.	TYPE	STATION	RIM ELEV.	INV. ELEV. IN	INV. ELEV. OUT	REMARKS
1	PROP CB	25+13, 48' LT	51.67	-	46.36 (EX)	OFFSET TOP DEEP SUMP HOODED CB, REM EXIST CB
2	PROP CB	25+29, 13' LT	51.53	-	47.53	DEEP SUMP HOODED CB
3	PROP DMH	25+16, 4' LT	51.38	46.20 (EX) 47.00 (2) 44.20 (4)	44.00 (EX)	

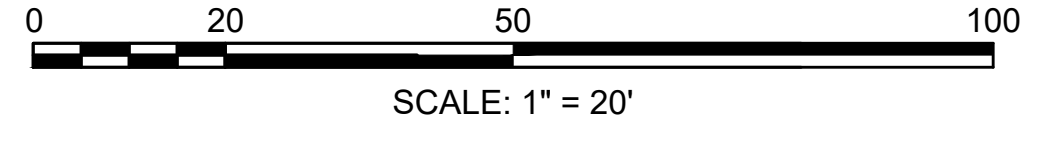
EXISTING INVERT TABLE

CB2 RIM=51.60' SUMP=47.3	CB7 RIM=51.48' SUMP=48.64	DMH1 RIM=51.38' INV.(a)=47.84 INV.(b)=44.00 INV.(c)=46.20
CB3 RIM=52.16' SUMP=47.56	CB8 RIM=51.47' SUMP=48.07	DMH2 RIM=51.37' INV.(a)=47.6 SUMP=36.93
CB4 RIM=51.64' SUMP=47.04	CB9 RIM=51.30' INV.(a)=48.15 SUMP=48.15	
CB5 RIM=51.95'	CB10 RIM=50.31' INV.(a)=47.51 SUMP=44.51	
CB6 RIM=51.56' INV.(a)=46.36 SUMP=43.56		



CONTINUED ON SHEET NO. 67

CONTINUED ON SHEET NO. 69

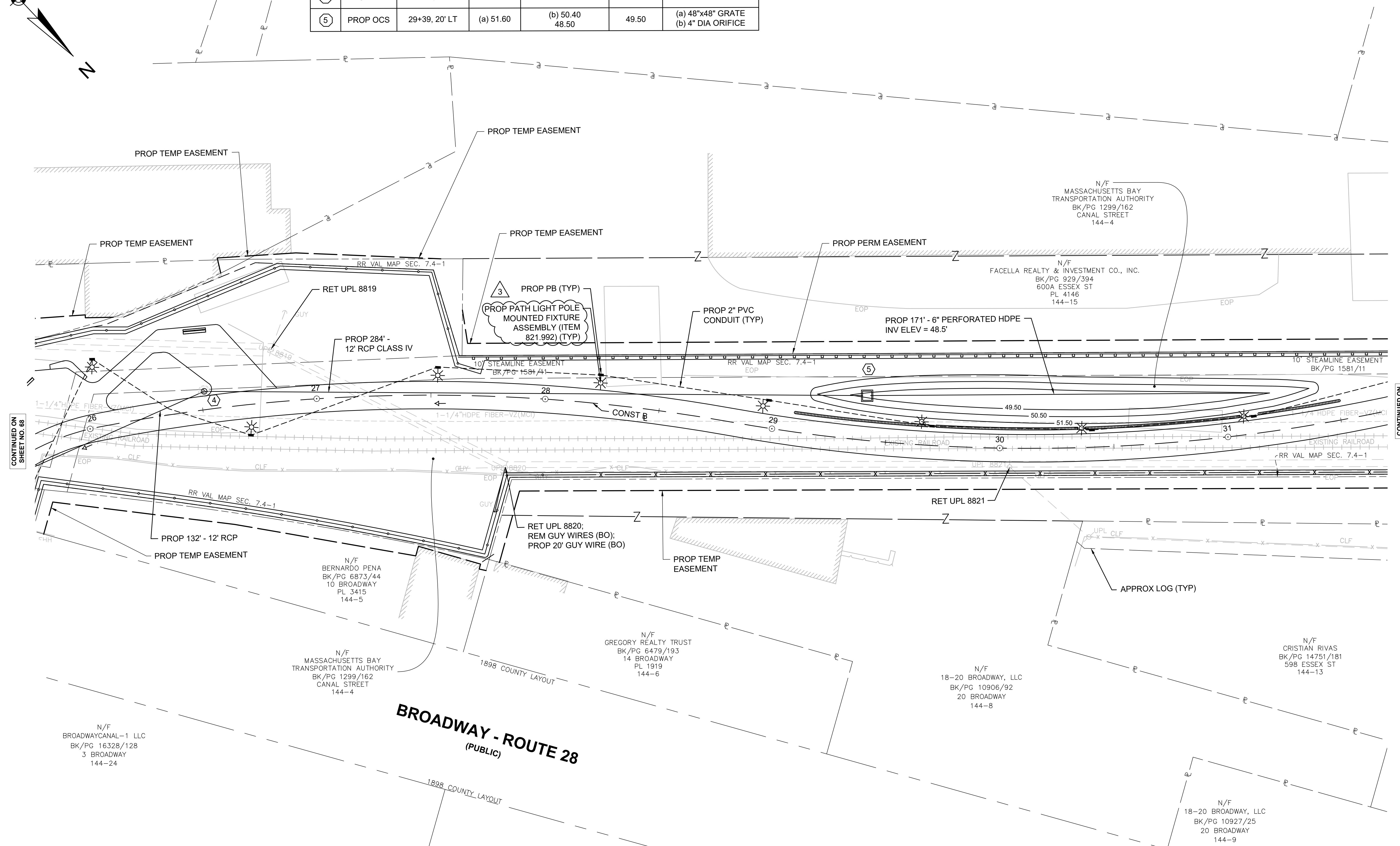
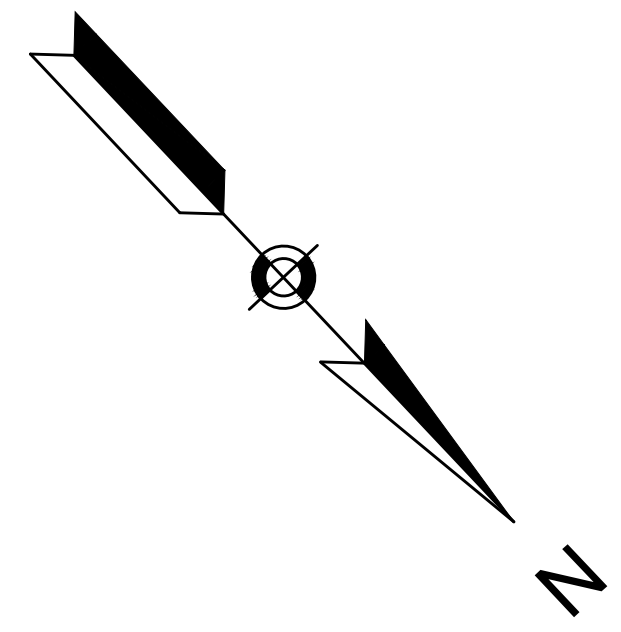


**LAWRENCE
LMRC RAIL TRAIL**

STATE	FED. AID PROJ. NO.	SHEET NO.	TOTAL SHEETS
MA	CMQ-003S(733)X	69	245
PROJECT FILE NO.		608930	

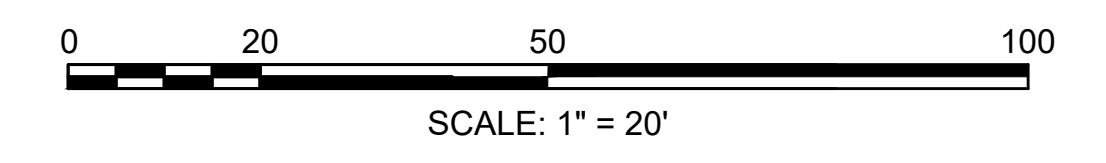
UTILITY PLANS - 4 OF 16

PROPOSED DRAINAGE STRUCTURE DATA						
NO.	TYPE	STATION	RIM ELEV.	INV. ELEV. IN	INV. ELEV. OUT	REMARKS
④	PROP DMH	26+52, 8' LT	52.53	46.55	45.52	
⑤	PROP OCS	29+39, 20' LT	(a) 51.60	(b) 50.40 48.50	49.50	(a) 48"x48" GRATE (b) 4" DIA ORIFICE



CONTINUED ON SHEET NO. 68

CONTINUED ON SHEET NO. 70

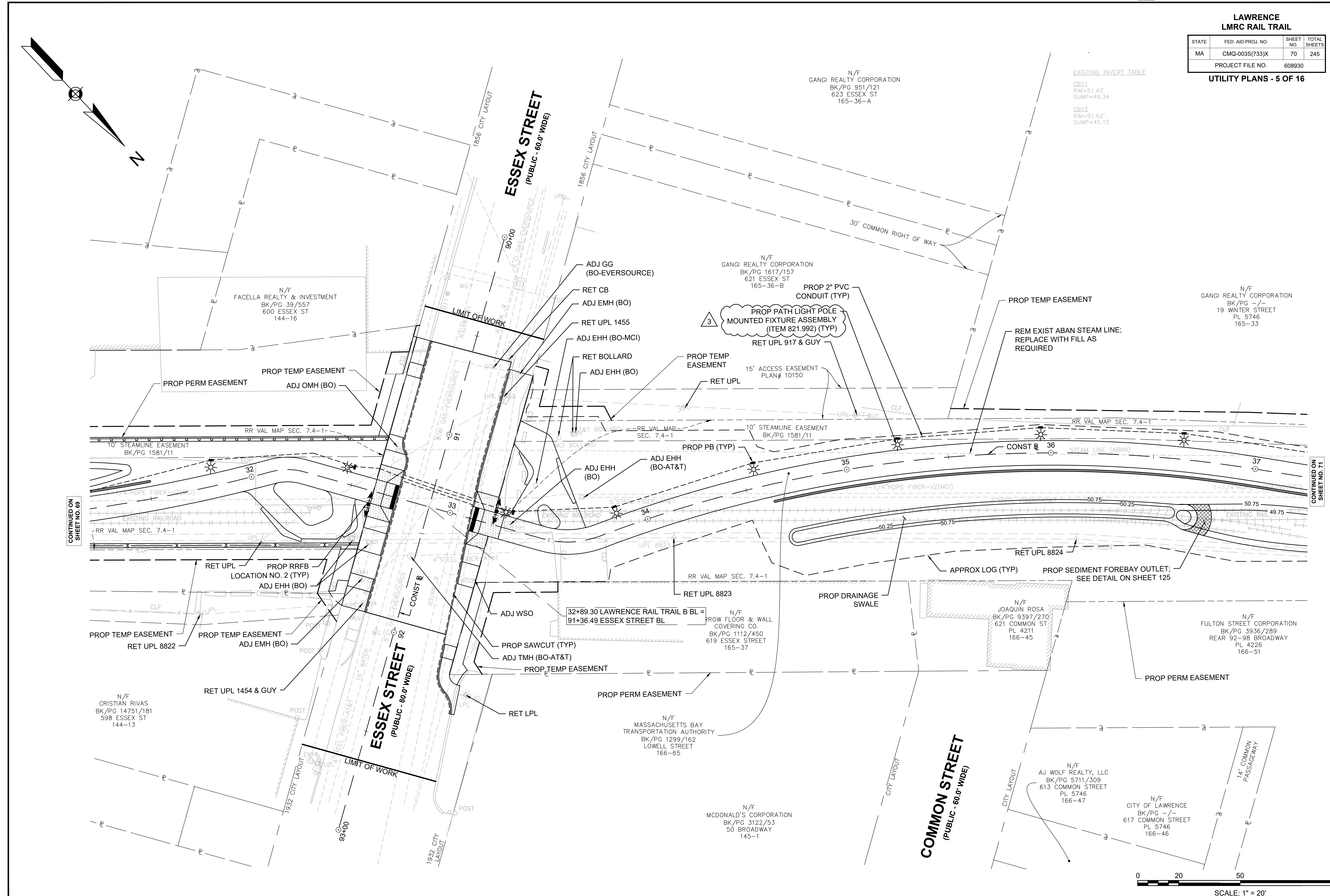


**LAWRENCE
LMRC RAIL TRAIL**

STATE	FED. AID PROJ. NO.	SHEET NO.	TOTAL SHEETS
MA	CMQ-003S(733)X	70	245
PROJECT FILE NO. 608930			

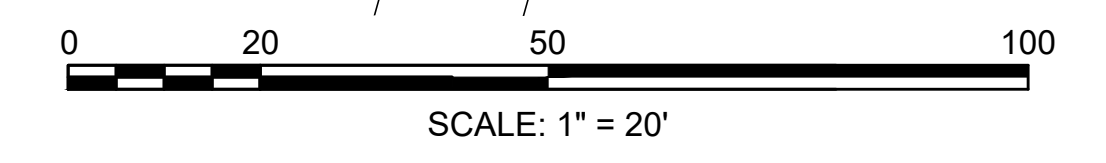
UTILITY PLANS - 5 OF 16

EXISTING INVERT TABLE
 CB11
 RIM=51.43'
 SUMP=49.34
 CB12
 RIM=51.62'
 SUMP=45.12



CONTINUED ON
SHEET NO. 69

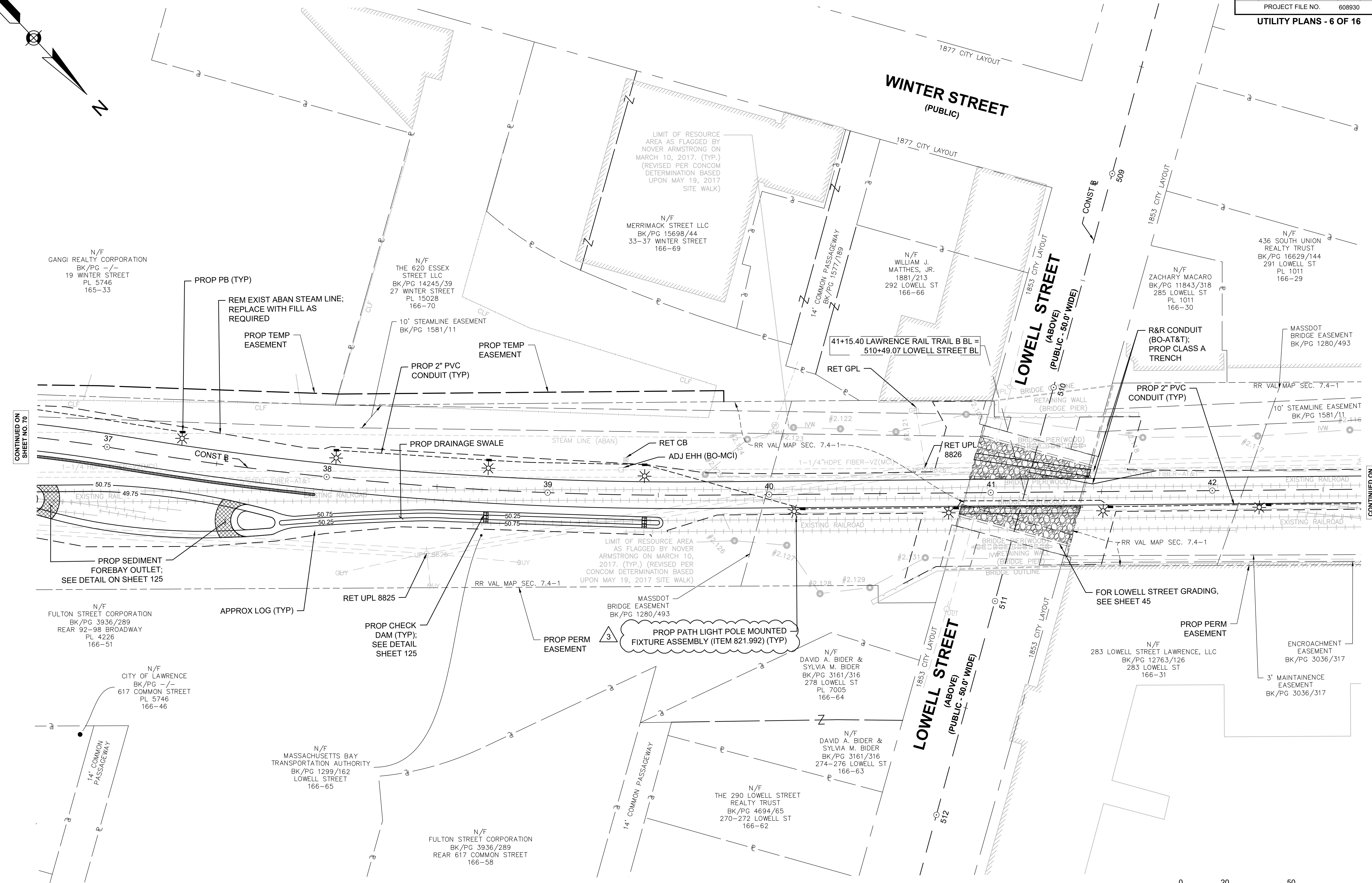
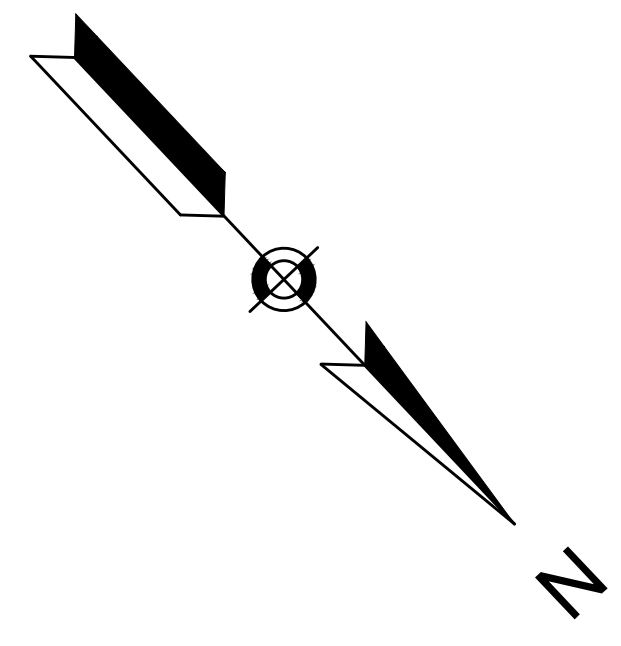
CONTINUED ON
SHEET NO. 71



**LAWRENCE
LMRC RAIL TRAIL**

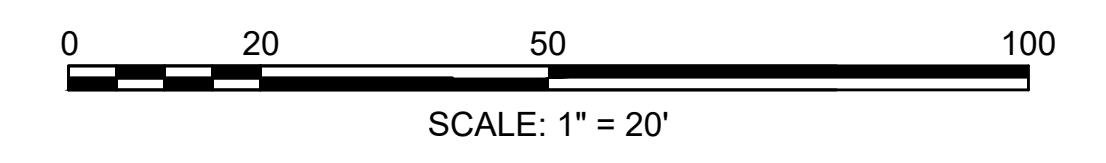
STATE	FED. AID PROJ. NO.	SHEET NO.	TOTAL SHEETS
MA	CMQ-003S(733)X	71	245
PROJECT FILE NO. 608930			

UTILITY PLANS - 6 OF 16



CONTINUED ON SHEET NO. 70

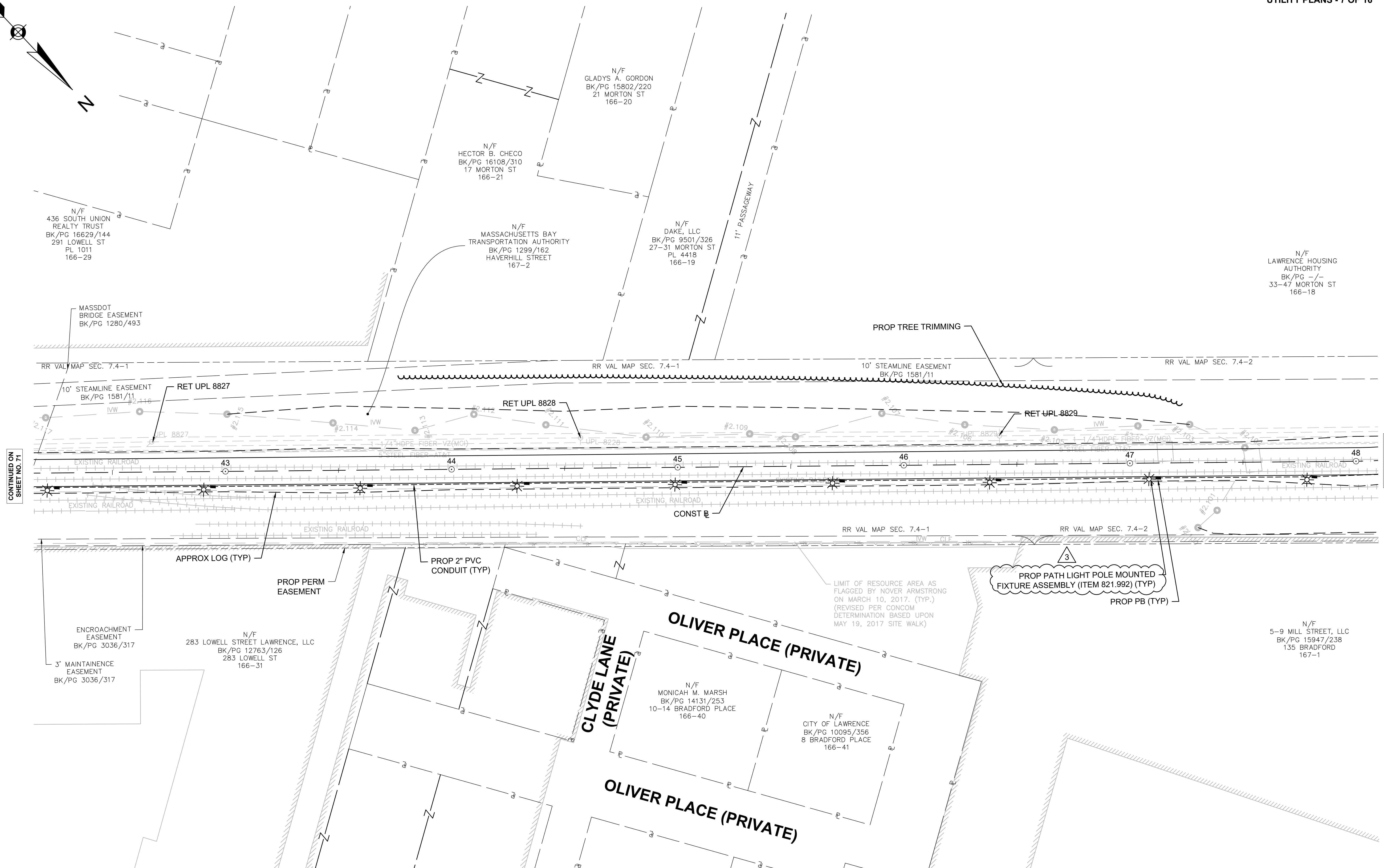
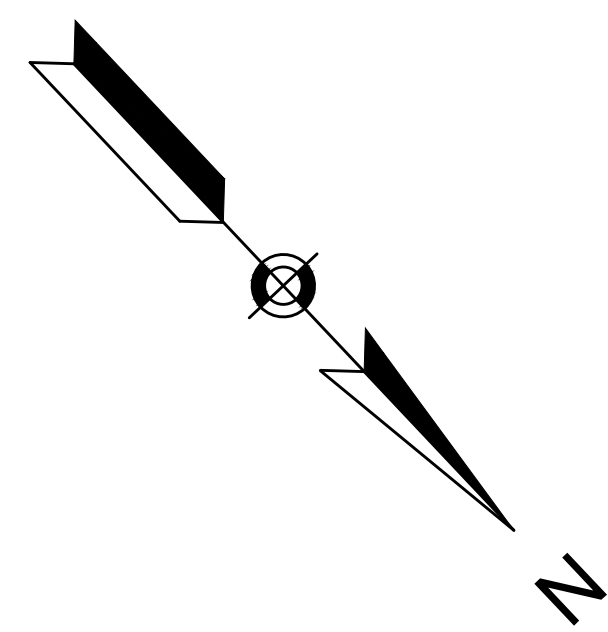
CONTINUED ON SHEET NO. 72



**LAWRENCE
LMRC RAIL TRAIL**

STATE	FED. AID PROJ. NO.	SHEET NO.	TOTAL SHEETS
MA	CMQ-003S(733)X	72	245
PROJECT FILE NO.		608930	

UTILITY PLANS - 7 OF 16



CONTINUED ON
SHEET NO. 71

CONTINUED ON
SHEET NO. 73

N/F
LAWRENCE HOUSING
AUTHORITY
BK/PG 7-/-
33-47 MORTON ST
166-18

N/F
436 SOUTH UNION
REALTY TRUST
BK/PG 16629/144
291 LOWELL ST
PL 1011
166-29

N/F
HECTOR B. CHECO
BK/PG 16108/310
17 MORTON ST
166-21

N/F
GLADYS A. GORDON
BK/PG 15802/220
21 MORTON ST
166-20

N/F
MASSACHUSETTS BAY
TRANSPORTATION AUTHORITY
BK/PG 1299/162
HAVERHILL STREET
167-2

N/F
DAKE, LLC
BK/PG 9501/326
27-31 MORTON ST
PL 4418
166-19

MASSDOT
BRIDGE EASEMENT
BK/PG 1280/493

10' STEAMLINE EASEMENT
BK/PG 1581/11

RET UPL 8828

PROP PATH LIGHT POLE MOUNTED
FIXTURE ASSEMBLY (ITEM 821.992) (TYP)

ENCROACHMENT
EASEMENT
BK/PG 3036/317

N/F
283 LOWELL STREET LAWRENCE, LLC
BK/PG 12763/126
283 LOWELL ST
166-31

CLYDE LANE (PRIVATE)

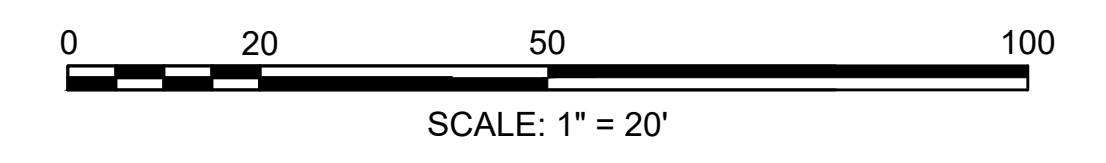
OLIVER PLACE (PRIVATE)

OLIVER PLACE (PRIVATE)

N/F
MONICAH M. MARSH
BK/PG 14131/253
10-14 BRADFORD PLACE
166-40

N/F
CITY OF LAWRENCE
BK/PG 10095/356
8 BRADFORD PLACE
166-41

N/F
5-9 MILL STREET, LLC
BK/PG 15947/238
135 BRADFORD
167-1



**LAWRENCE
LMRC RAIL TRAIL**

STATE	FED. AID PROJ. NO.	SHEET NO.	TOTAL SHEETS
MA	CMQ-003S(733)X	73	245
PROJECT FILE NO. 608930			

UTILITY PLANS - 8 OF 16

PROPOSED DRAINAGE STRUCTURE DATA

NO.	TYPE	STATION	RIM ELEV.	INV. ELEV. IN	INV. ELEV. OUT	REMARKS
⑧	PROP CB	100+87, 17' LT	57.92	-	MATCH EXIST*	OFFSET TOP

NOTE: THERE IS NO PROPOSED STRUCTURE NO. 6 OR NO. 7

*CONTRACTOR SHALL TEST PIT PRIOR TO CONSTRUCTION TO CONFIRM EXISTING DRAINAGE PIPE

EXISTING INVERT TABLE

CB13
RIM=57.88
INV. A=55.00 (8" PVC)
INV. B=55.37 (8" PVC)

CB14
RIM=58.09
INV. A=55.41 (8" PVC)

CB15
RIM=61.42
INV. (a)=59.17
SUMP=59.17

N/F
COLONY REALTY TRUST
BK/PG 10851/161
431 HAVERHILL ST
189-55

N/F
COLONY REALTY TRUST
BK/PG 4648/253
13 RAILROAD ST
189-50

N/F
MASSACHUSETTS ELECTRIC
COMPANY
BK/PG 1074/21
425 HAVERHILL ST
PL 5594
189-56

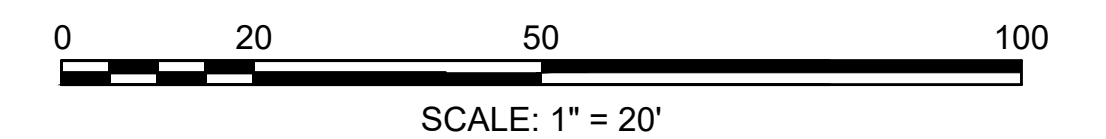
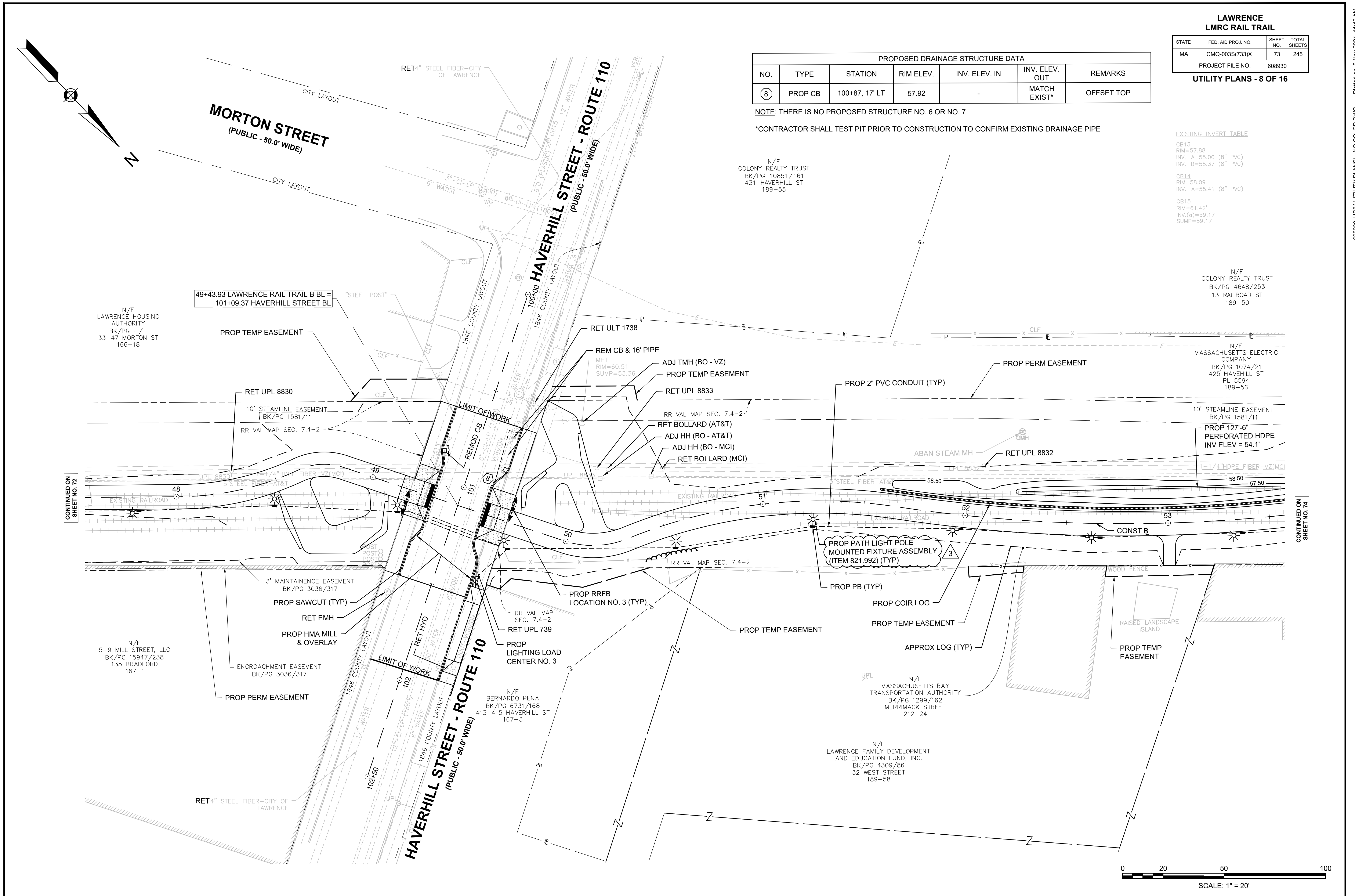
49+43.93 LAWRENCE RAIL TRAIL B BL =
101+09.37 HAVERHILL STREET BL

N/F
LAWRENCE HOUSING
AUTHORITY
BK/PG -/-
33-47 MORTON ST
166-18

10' STEAMLINE EASEMENT
BK/PG 1581/11
PROP 127'-6"
PERFORATED HDPE
INV ELEV = 54.1'

CONTINUED ON
SHEET NO. 72

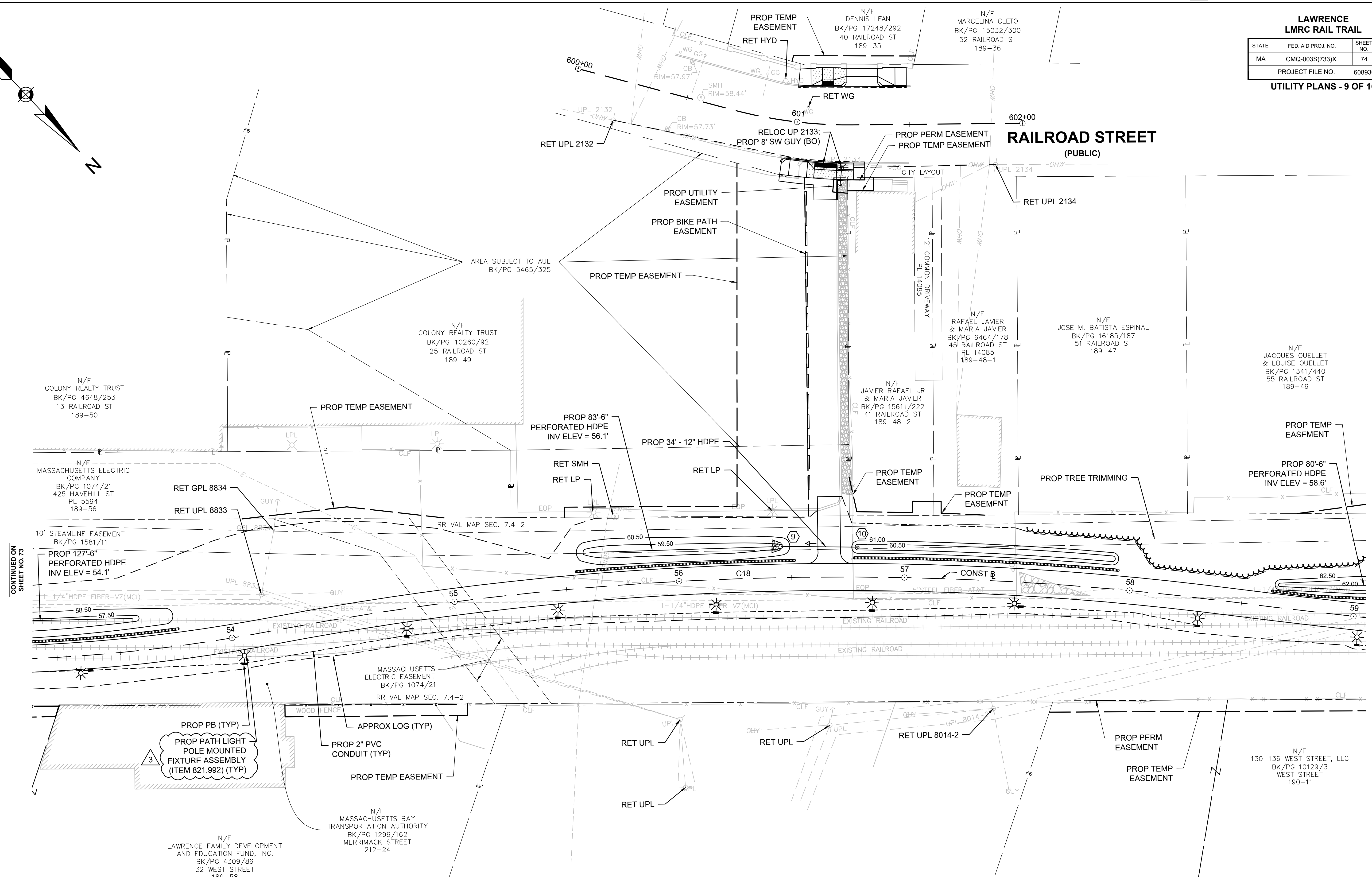
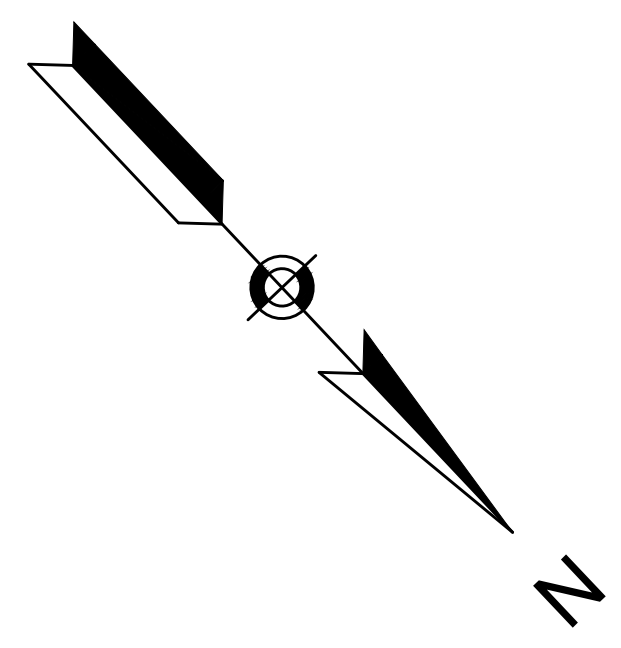
CONTINUED ON
SHEET NO. 74



**LAWRENCE
LMRC RAIL TRAIL**

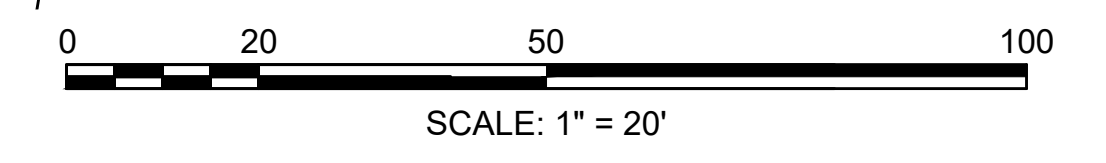
STATE	FED. AID PROJ. NO.	SHEET NO.	TOTAL SHEETS
MA	CMQ-003S(733)X	74	245
PROJECT FILE NO.		608930	

UTILITY PLANS - 9 OF 16



EXISTING INVERT TABLE
SMH2
RIM=61.18'

PROPOSED DRAINAGE STRUCTURE DATA						
NO.	TYPE	STATION	RIM ELEV.	INV. ELEV. IN	INV. ELEV. OUT	REMARKS
9	PROP FES	56+46, 14' LT	-	-	59.50	
10	PROP OCS	56+79, 13' LT	60.70	60.70	59.70	BEEHIVE OCS 12" DIA GRATE (PAID FOR UNDER ITEM 203.12)



CONTINUED ON SHEET NO. 73

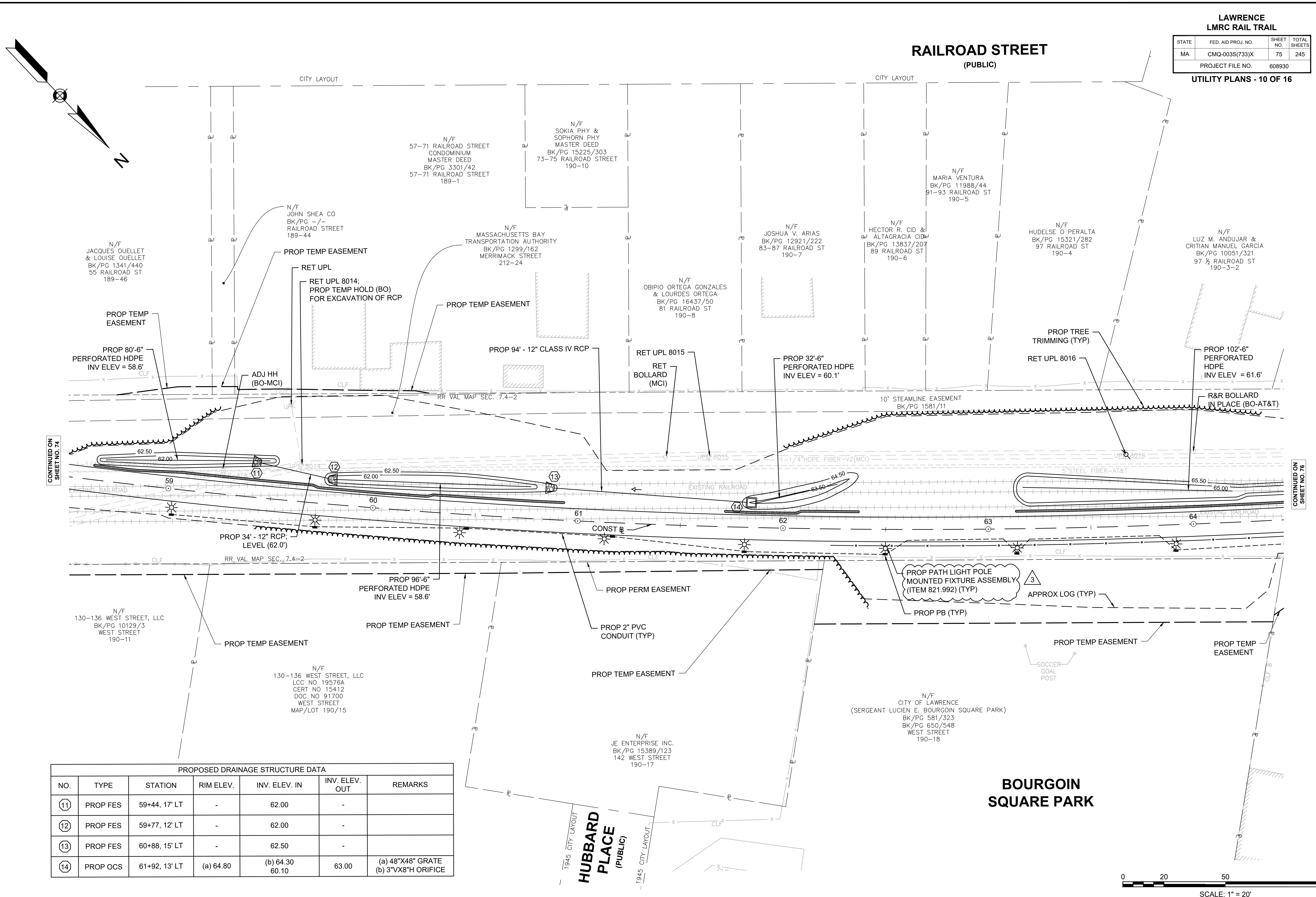
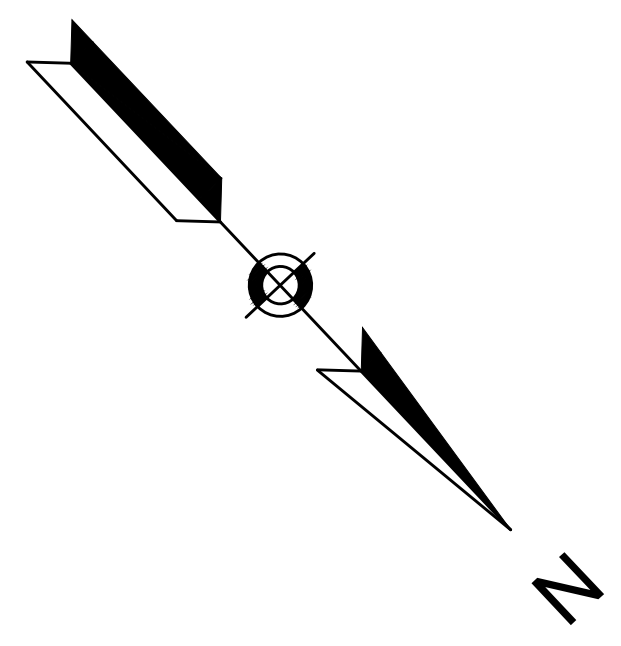
CONTINUED ON SHEET NO. 75

608930_HDB(UTILITY PLANS) - NO COLOR.DWG Picked on: 5-Nov-2024 11:41 AM

**LAWRENCE
LMRC RAIL TRAIL**

STATE	FED. AID PROJ. NO.	SHEET NO.	TOTAL SHEETS
MA	CMQ-003S(733)X	75	245
PROJECT FILE NO.		608930	

UTILITY PLANS - 10 OF 16



PROPOSED DRAINAGE STRUCTURE DATA

NO.	TYPE	STATION	RIM ELEV.	INV. ELEV. IN	INV. ELEV. OUT	REMARKS
11	PROP FES	59+44, 17' LT	-	62.00	-	
12	PROP FES	59+77, 12' LT	-	62.00	-	
13	PROP FES	60+88, 15' LT	-	62.50	-	
14	PROP OCS	61+92, 13' LT	(a) 64.80	(b) 64.30 60.10	63.00	(a) 48"X48" GRATE (b) 3"VX8"H ORIFICE



608930_HDB(UTILITY PLANS) - NO COLOR.DWG Plotted on 5-Nov-2024 11:41 AM

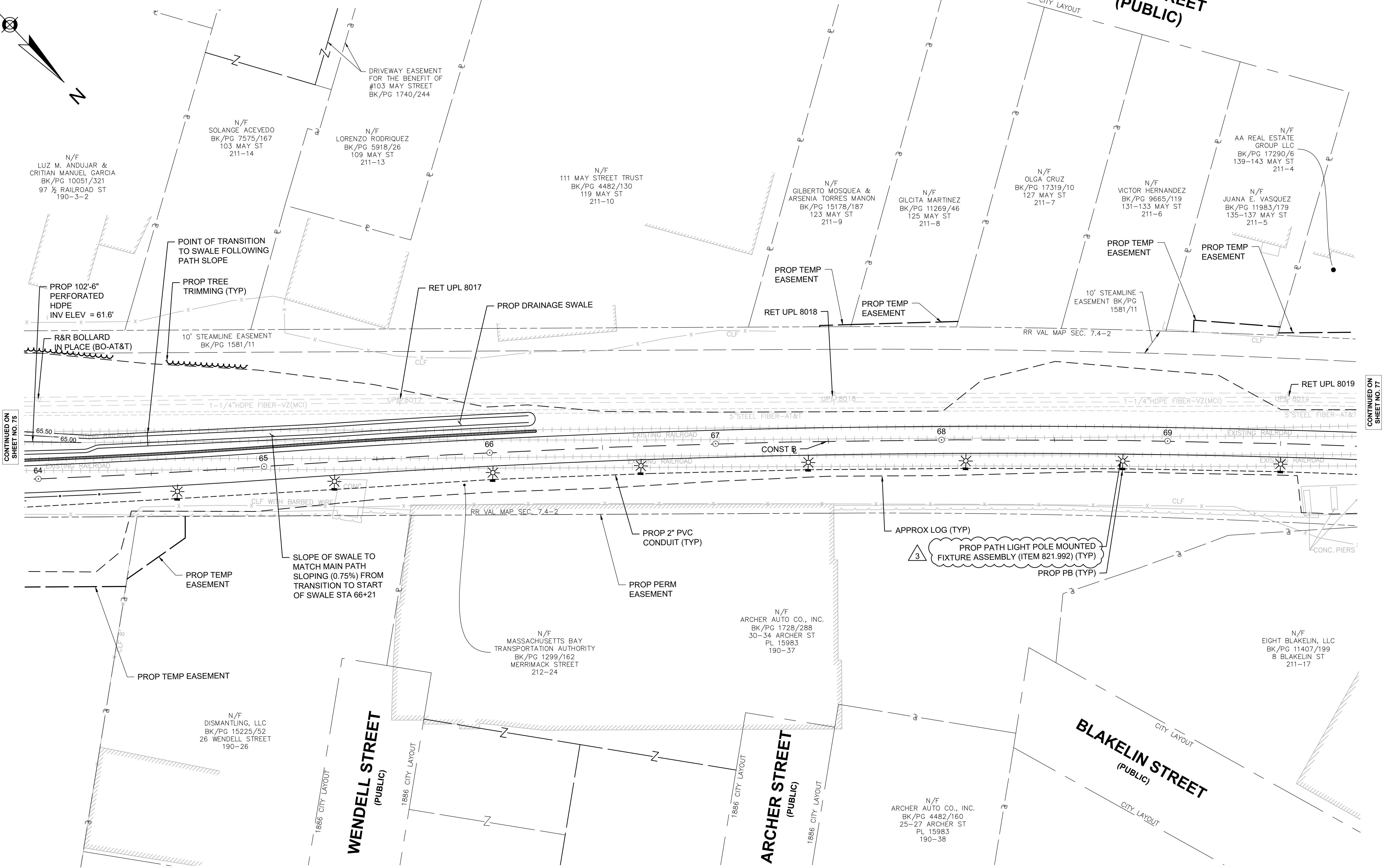
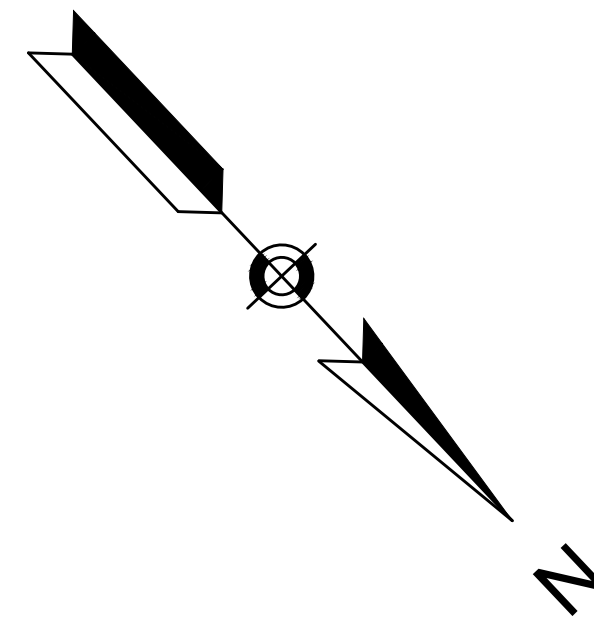
CONTINUED ON SHEET NO. 74

CONTINUED ON SHEET NO. 76

LAWRENCE
LMRC RAIL TRAIL

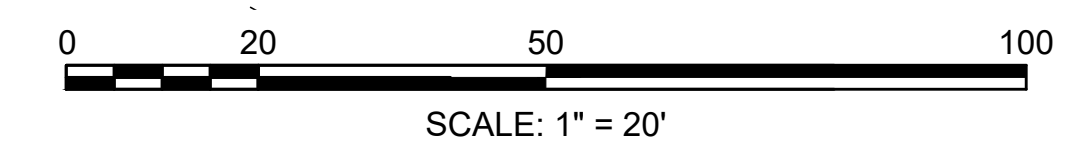
STATE	FED. AID PROJ. NO.	SHEET NO.	TOTAL SHEETS
MA	CMQ-003S(733)X	76	245
PROJECT FILE NO.		608930	

UTILITY PLANS - 11 OF 16



CONTINUED ON SHEET NO. 75

CONTINUED ON SHEET NO. 77

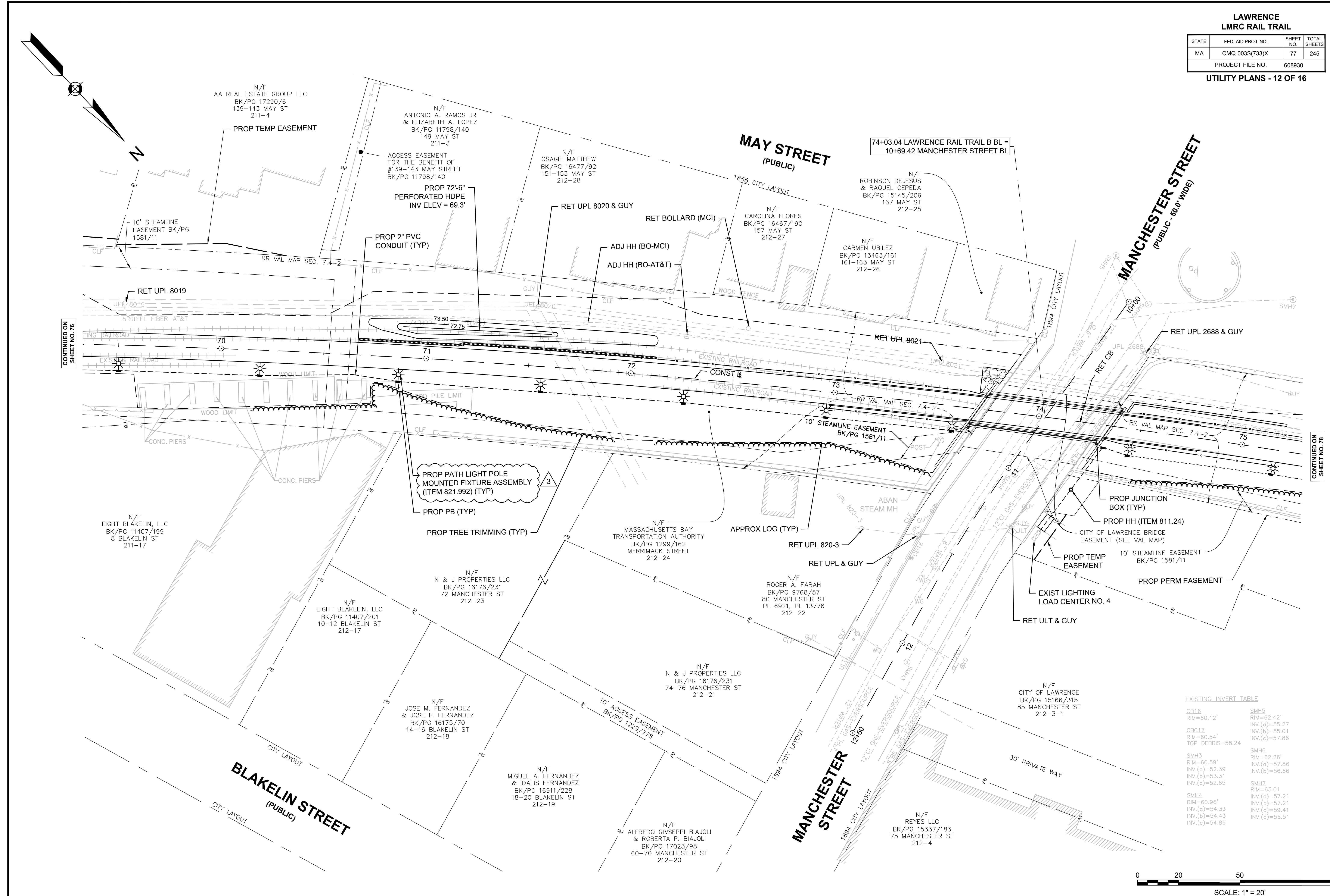


608930_HDBX(UTILITY PLANS) - NO COLOR.DWG Plotted on 5-Nov-2024 11:42 AM

LAWRENCE LMRC RAIL TRAIL

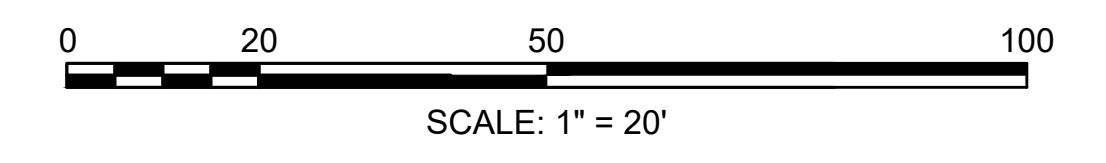
STATE	FED. AID PROJ. NO.	SHEET NO.	TOTAL SHEETS
MA	CMQ-003S(733)X	77	245
PROJECT FILE NO. 608930			

UTILITY PLANS - 12 OF 16



EXISTING INVERT TABLE

CB16 RIM=60.12'	SMH5 RIM=62.42'
CB17 RIM=60.54'	INV.(a)=55.27
TOP DEBRIS=58.24	INV.(b)=55.01
	INV.(c)=57.86
SMH3 RIM=60.59'	SMH6 RIM=62.26'
INV.(a)=52.39	INV.(a)=57.86
INV.(b)=53.31	INV.(b)=56.66
INV.(c)=52.65	SMH7 RIM=63.01
SMH4 RIM=60.96'	INV.(a)=57.21
INV.(a)=54.33	INV.(b)=57.21
INV.(b)=54.43	INV.(c)=59.41
INV.(c)=54.86	INV.(d)=56.51



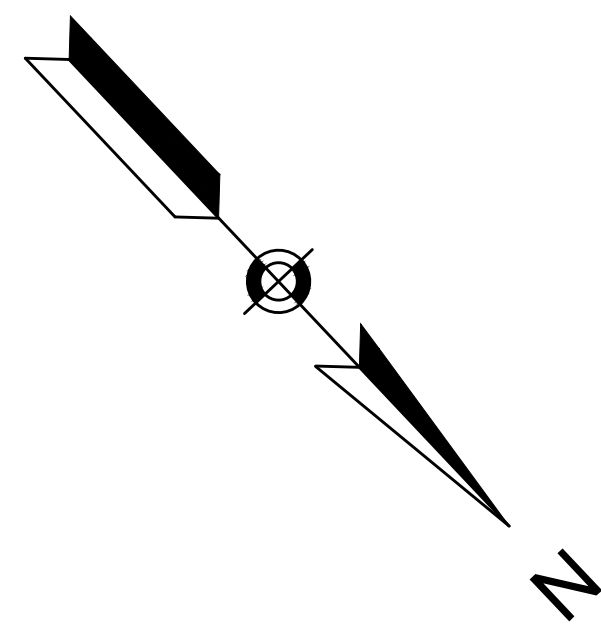
CONTINUED ON SHEET NO. 76

CONTINUED ON SHEET NO. 76

**LAWRENCE
LMRC RAIL TRAIL**

STATE	FED. AID PROJ. NO.	SHEET NO.	TOTAL SHEETS
MA	CMQ-003S(733)X	78	245
PROJECT FILE NO. 608930			

UTILITY PLANS - 13 OF 16



BARKER STREET
(PUBLIC)
1867 CITY LAYOUT

N/F
CITY OF LAWRENCE VETERANS LOT
BK/PG -/-
BARKER ST
212-1

1848 CITY LAYOUT

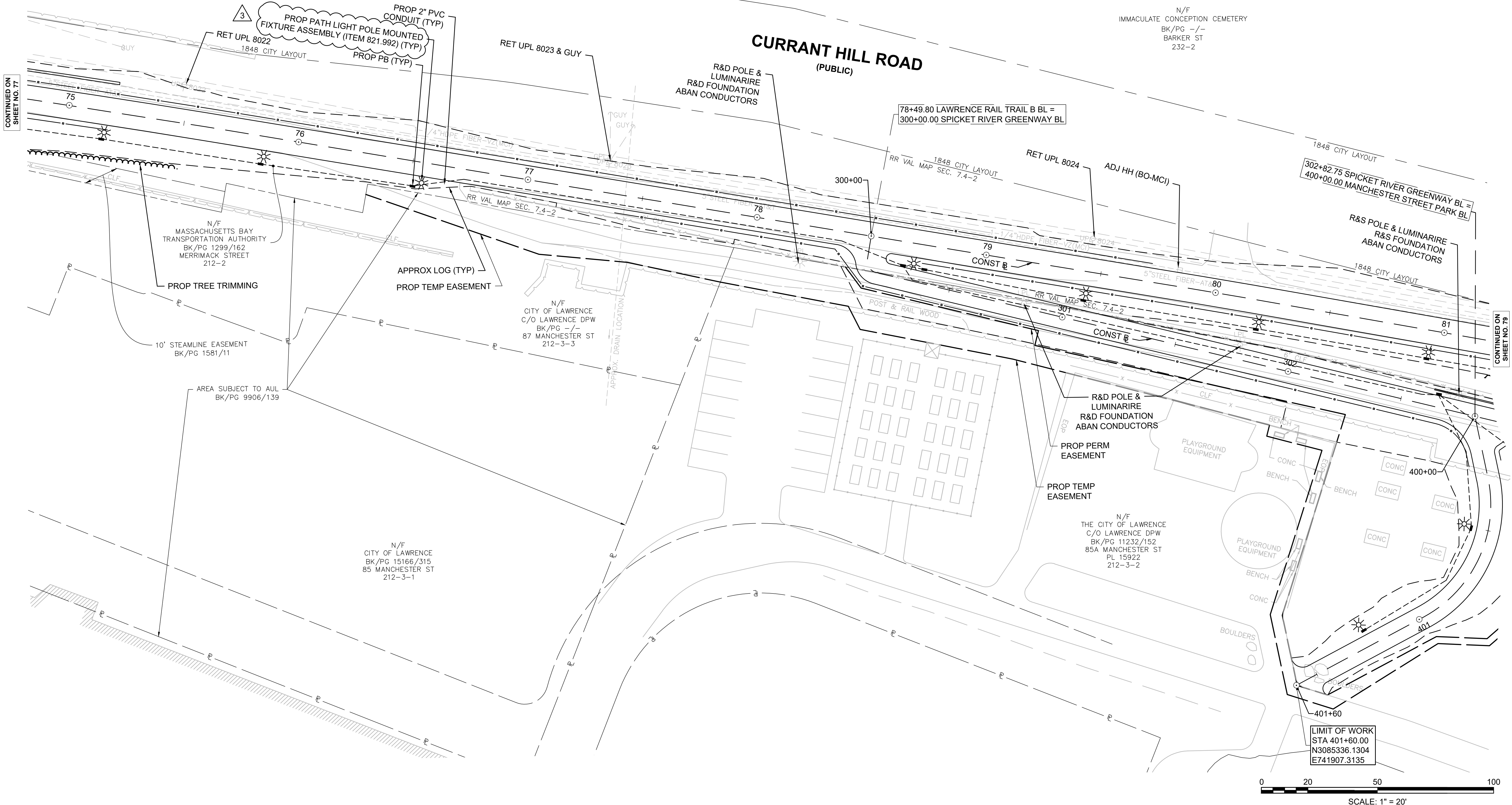
N/F
IMMACULATE CONCEPTION CEMETERY
BK/PG -/-
BARKER ST
232-2

CURRENT HILL ROAD
(PUBLIC)

78+49.80 LAWRENCE RAIL TRAIL B BL =
300+00.00 SPICKET RIVER GREENWAY BL

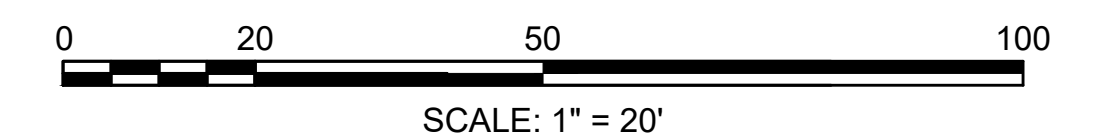
302+82.75 SPICKET RIVER GREENWAY BL =
400+00.00 MANCHESTER STREET PARK BL

R&S POLE & LUMINARIRE
R&S FOUNDATION
ABAN CONDUCTORS



CONTINUED ON
SHEET NO. 77

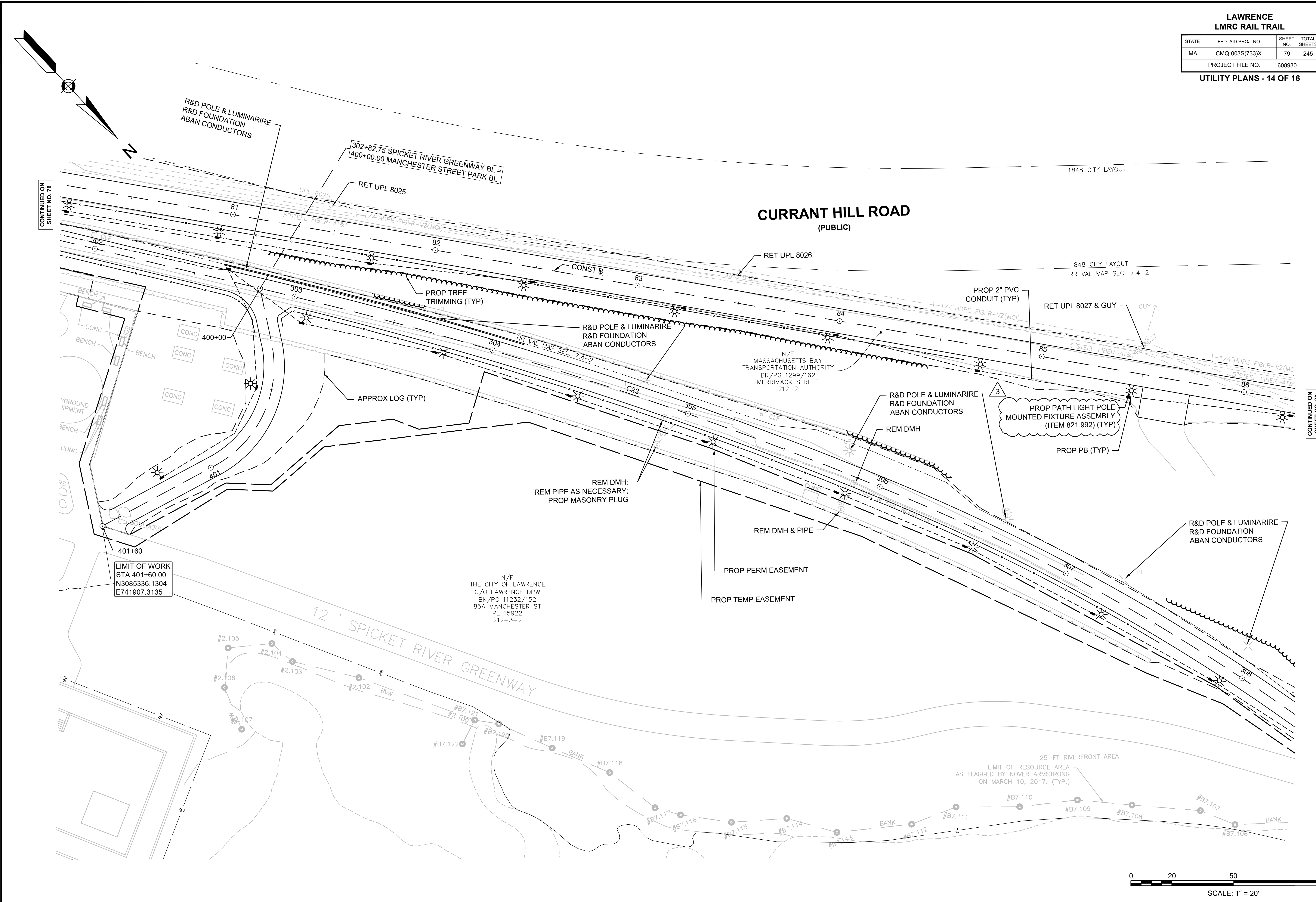
CONTINUED ON
SHEET NO. 79



**LAWRENCE
LMRC RAIL TRAIL**

STATE	FED. AID PROJ. NO.	SHEET NO.	TOTAL SHEETS
MA	CMQ-003S(733)X	79	245
PROJECT FILE NO. 608930			

UTILITY PLANS - 14 OF 16



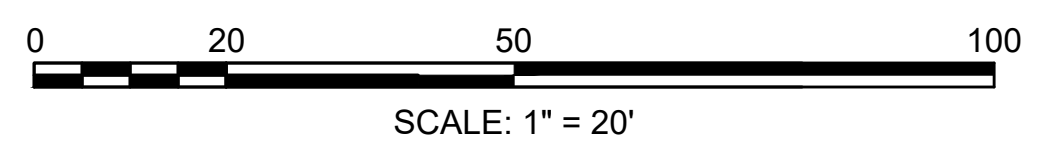
CONTINUED ON SHEET NO. 78

CONTINUED ON SHEET NO. 80

LIMIT OF WORK
STA 401+60.00
N3085336.1304
E741907.3135

N/F
THE CITY OF LAWRENCE
C/O LAWRENCE DPW
BK/PG 11232/152
85A MANCHESTER ST
PL 15922
212-3-2

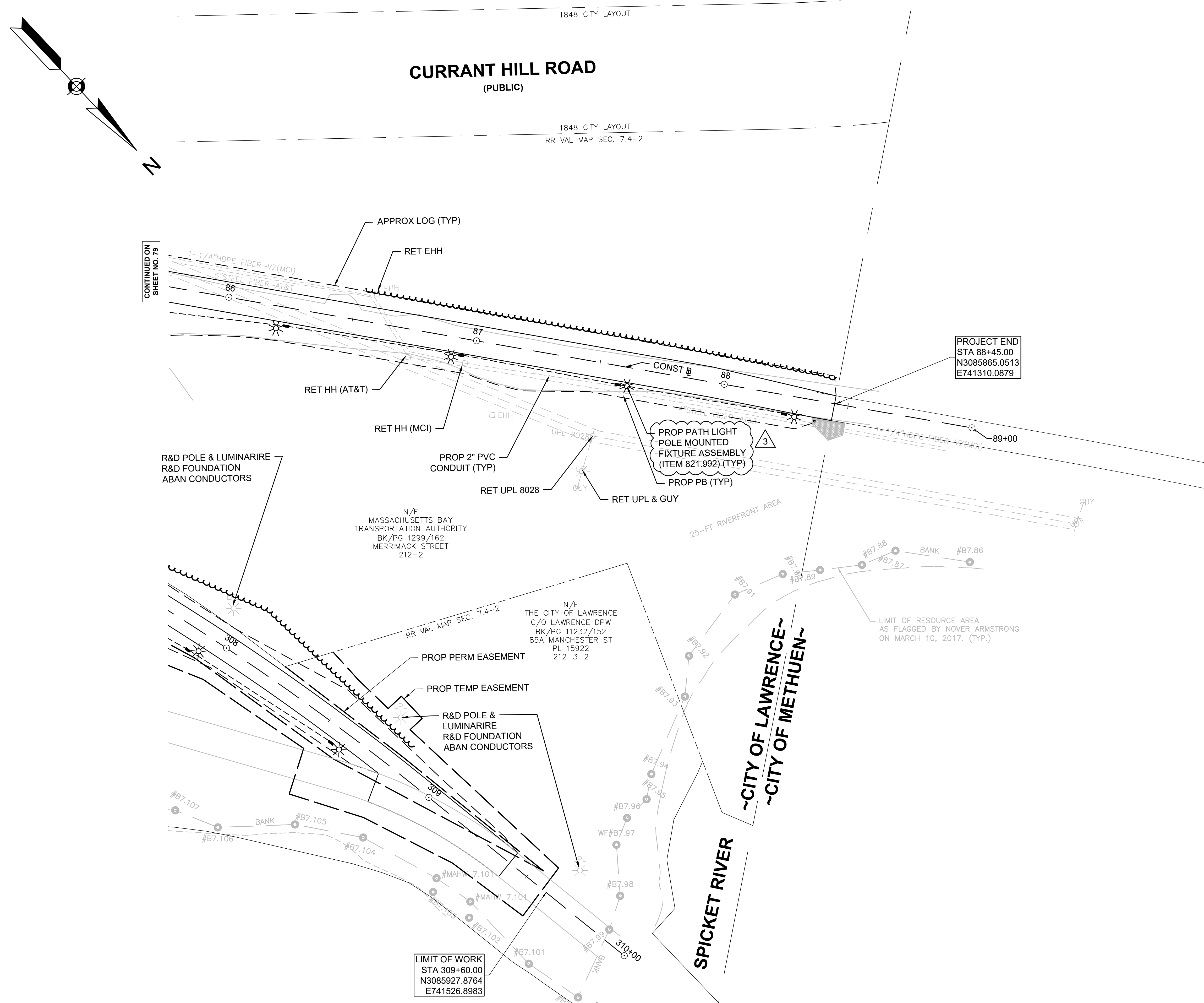
25-FT RIVERFRONT AREA
LIMIT OF RESOURCE AREA
AS FLAGGED BY NOVER ARMSTRONG
ON MARCH 10, 2017. (TYP.)



**LAWRENCE
LMRC RAIL TRAIL**

STATE	FED. AID PROJ. NO.	SHEET NO.	TOTAL SHEETS
MA	CMQ-003S(733)X	80	245
PROJECT FILE NO.		608930	

UTILITY PLANS - 15 OF 16



CONTINUED ON
SHEET NO. 79

PROJECT END
STA 88+45.00
N3085865.0513
E741310.0879

LIMIT OF WORK
STA 309+60.00
N3085927.8764
E741526.8983

0 20 50 100
SCALE: 1" = 20'

608930_HDS(UTILITY PLANS) - NO COLOR.DWG Plotted on: 5-Nov-2024 11:44 AM

THIS PAGE IS INTENTIONALLY LEFT BLANK