



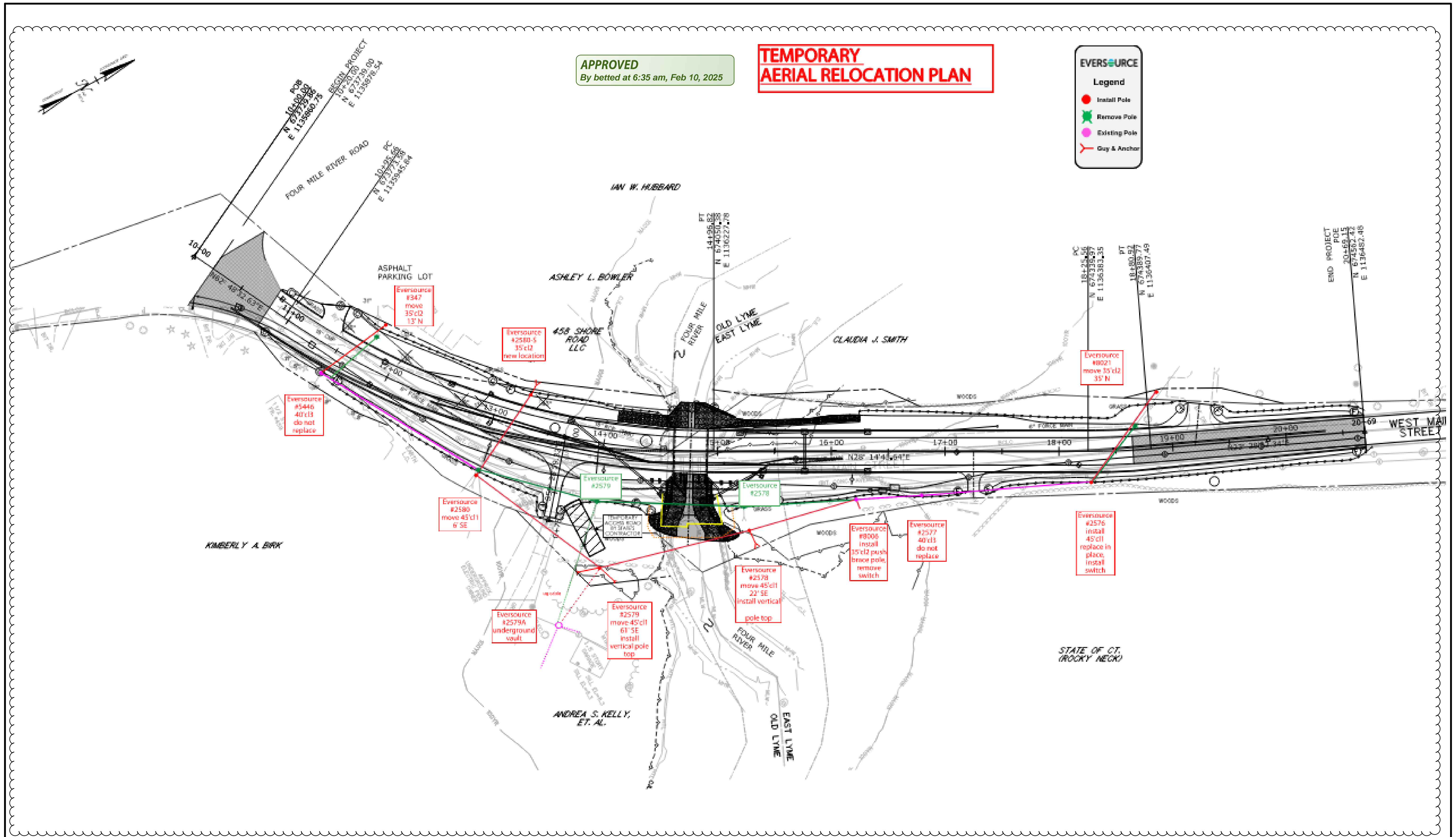
APPROVED
By betted at 6:35 am, Feb 10, 2025

TEMPORARY AERIAL RELOCATION PLAN

EVERSOURCE

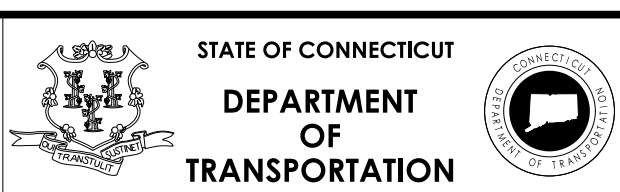
Legend

- Install Pole
- ✕ Remove Pole
- Existing Pole
- Guy & Anchor



ADDENDUM NO. 2

FOR INFORMATION ONLY



PROJECT NUMBER: 0104-0175
 PROJECT DESCRIPTION: REPLACEMENT OF BRIDGE NOS. 02713 & 06896, ROUTE 156 OVER FOUR MILE RIVER & ARMSTRONG BROOK
 TOWN(S): OLD LYME & EAST LYME
 DRAWING TITLE: BRIDGE NO. 02713 - EVERSOURCE ENERGY FIO RELOCATION PLAN-TEMPORARY

DRAWING NO.
EE-02
 SHEET NO.
13.02.A2

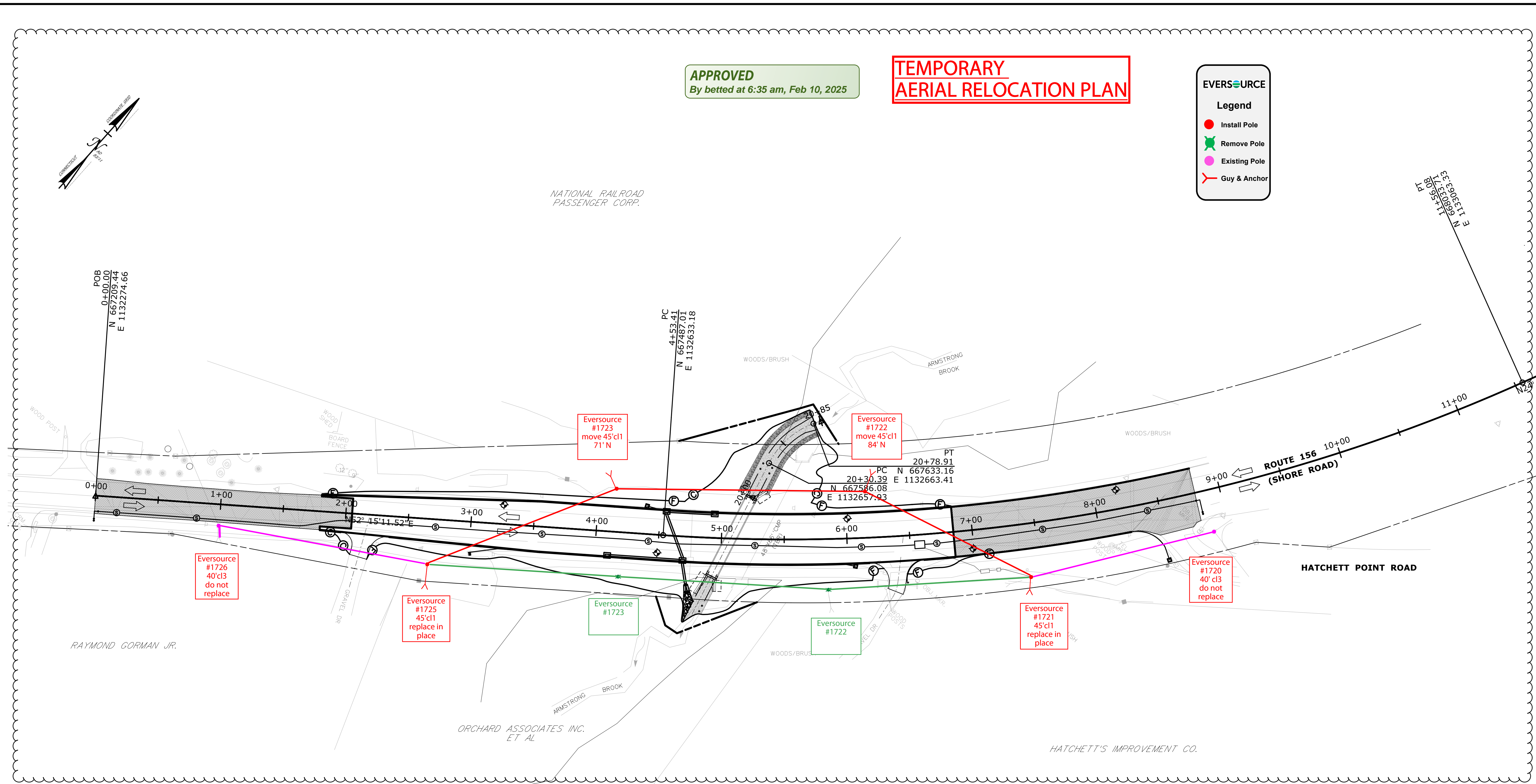
APPROVED
By betted at 6:35 am, Feb 10, 2025

**TEMPORARY
AERIAL RELOCATION PLAN**

EVERSOURCE

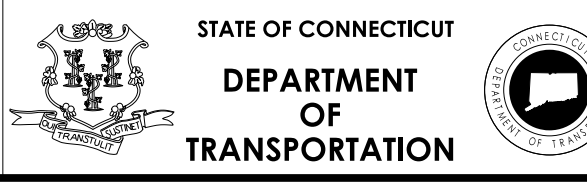
Legend

- Install Pole
- ✕ Remove Pole
- Existing Pole
- Guy & Anchor



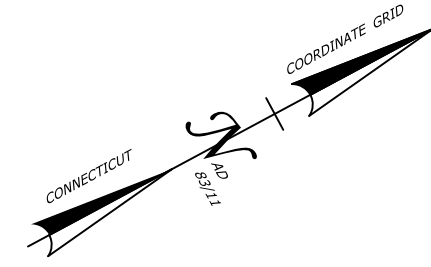
ADDENDUM NO. 2

FOR INFORMATION ONLY



PROJECT NUMBER: 0104-0175
 PROJECT DESCRIPTION: REPLACEMENT OF BRIDGE NOS. 02713 & 06896, ROUTE 156 OVER FOUR MILE RIVER & ARMSTRONG BROOK
 TOWN(S): OLD LYME & EAST LYME
 DRAWING TITLE: BRIDGE NO. 06896 - EVERSOURCE ENERGY FIO RELOCATION PLAN-TEMPORARY

DRAWING NO.
EE-03
 SHEET NO.
13.03.A2



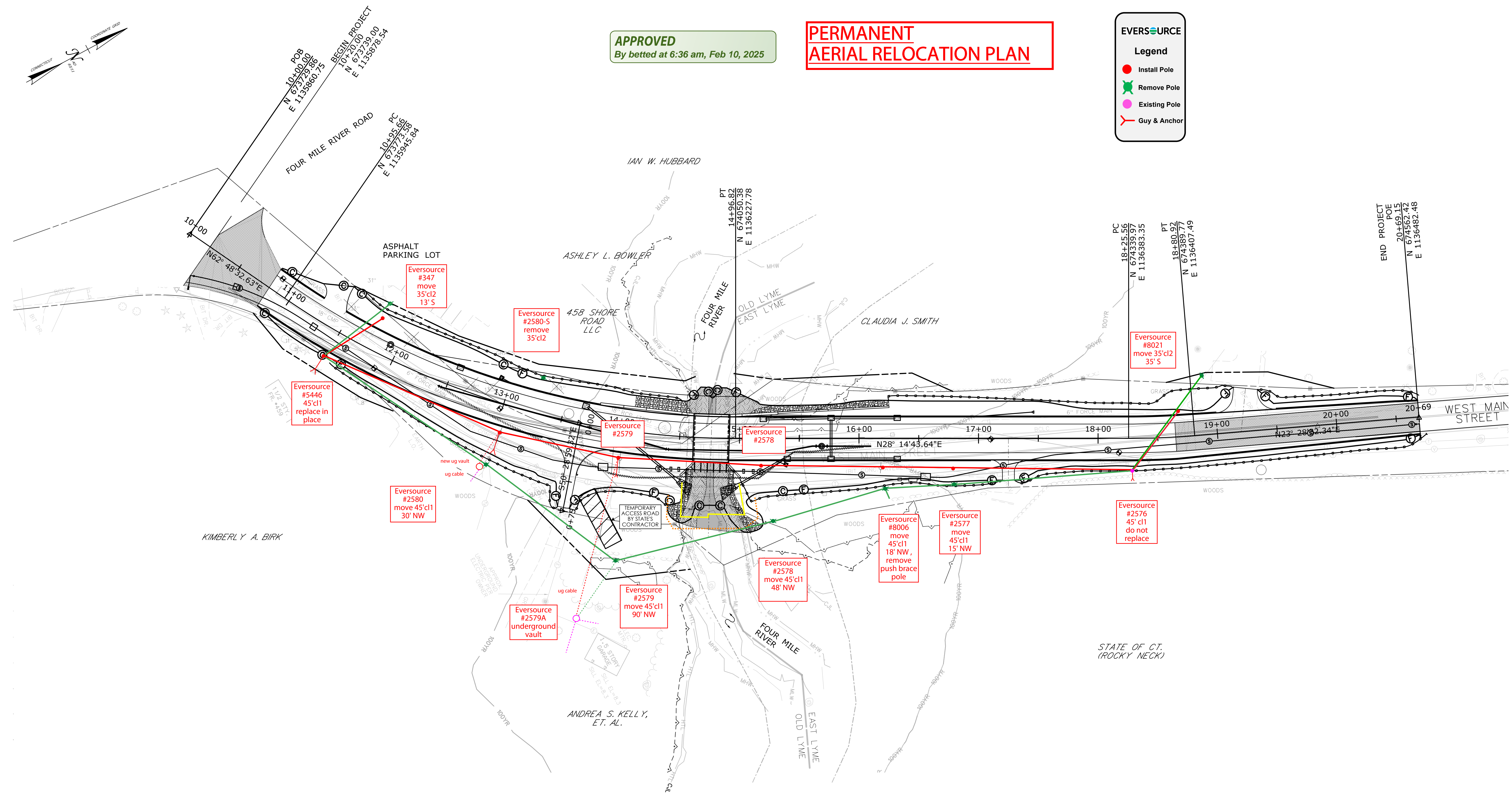
APPROVED
By betted at 6:36 am, Feb 10, 2025

PERMANENT AERIAL RELOCATION PLAN

EVERSOURCE

Legend

- Install Pole
- ✂ Remove Pole
- Existing Pole
- Guy & Anchor



Eversource #347
move
35'cl2
13'S

Eversource #2580-S
remove
35'cl2

Eversource #5446
45'cl1
replace in place

Eversource #2580
move 45'cl1
30' NW

Eversource #2579

Eversource #2578

Eversource #2578
move 45'cl1
48' NW

Eversource #8006
move
45'cl1
18' NW,
remove
push brace
pole

Eversource #2577
move
45'cl1
15' NW

Eversource #2576
45'cl1
do not
replace

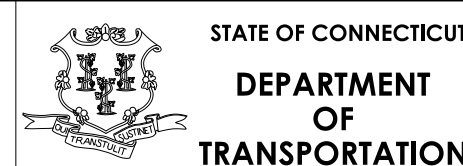
Eversource #8021
move 35'cl2
35' S

Eversource #2579A
underground
vault

Eversource #2579
move 45'cl1
90' NW

NEW SHEET ADDED BY ADDENDUM NO. 2

FOR INFORMATION ONLY



PROJECT NUMBER: 0104-0175
 PROJECT DESCRIPTION: REPLACEMENT OF BRIDGE NOS. 02713 & 06896, ROUTE 156 OVER FOUR MILE RIVER & ARMSTRONG BROOK
 TOWN(S): OLD LYME & EAST LYME
 DRAWING TITLE: BRIDGE NO. 02713 - EVERSOURCE ENERGY FIO RELOCATION PLAN-PERMANENT

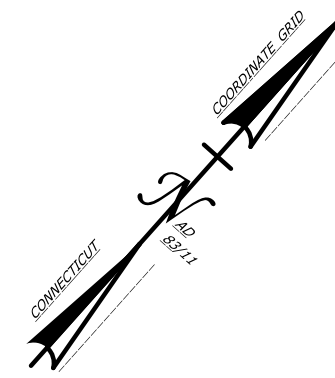
DRAWING NO.
EE-02
SHEET NO.
13.04.A2

APPROVED
By betted at 6:36 am, Feb 10, 2025

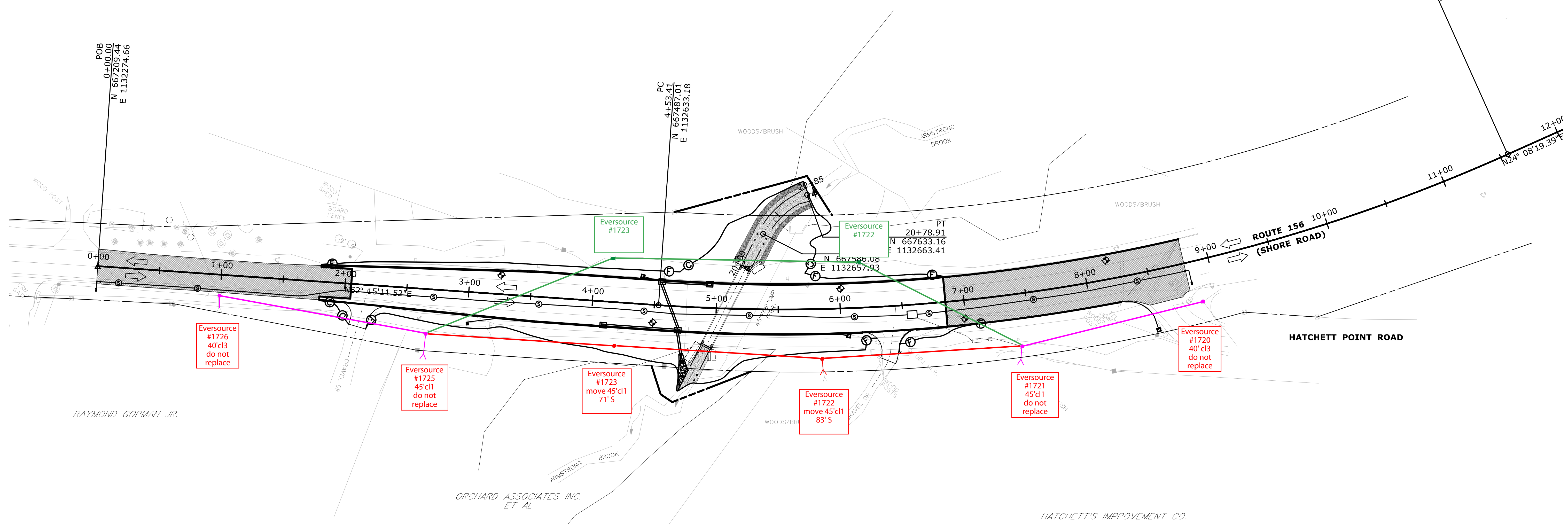
**PERMANENT
AERIAL RELOCATION PLAN**

EVERSOURCE
Legend

- Install Pole
- ✕ Remove Pole
- Existing Pole
- Guy & Anchor

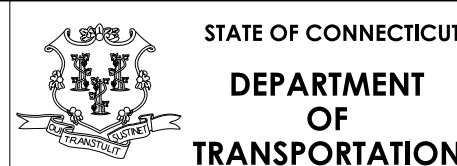


NATIONAL RAILROAD
PASSENGER CORP.



NEW SHEET ADDED BY ADDENDUM NO. 2

FOR INFORMATION ONLY



PROJECT NUMBER: 0104-0175
 PROJECT DESCRIPTION: REPLACEMENT OF BRIDGE NOS. 02713 & 06896, ROUTE 156 OVER FOUR MILE RIVER & ARMSTRONG BROOK
 TOWN(S): OLD LYME & EAST LYME
 DRAWING TITLE: BRIDGE NO. 06896 - EVERSOURCE ENERGY FIO RELOCATION PLAN-PERMANENT

DRAWING NO.
EE-03
 SHEET NO.
13.05.A2