


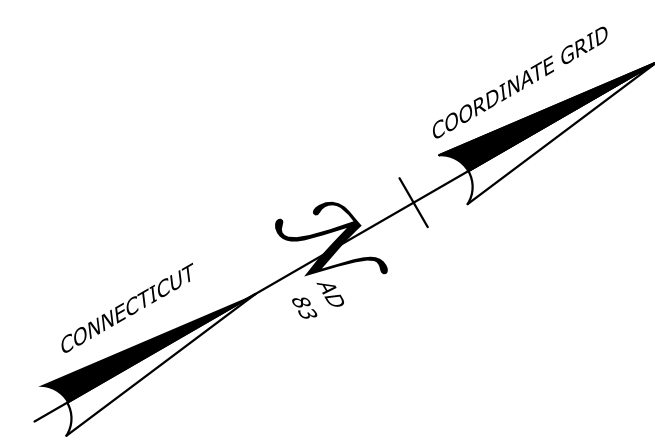
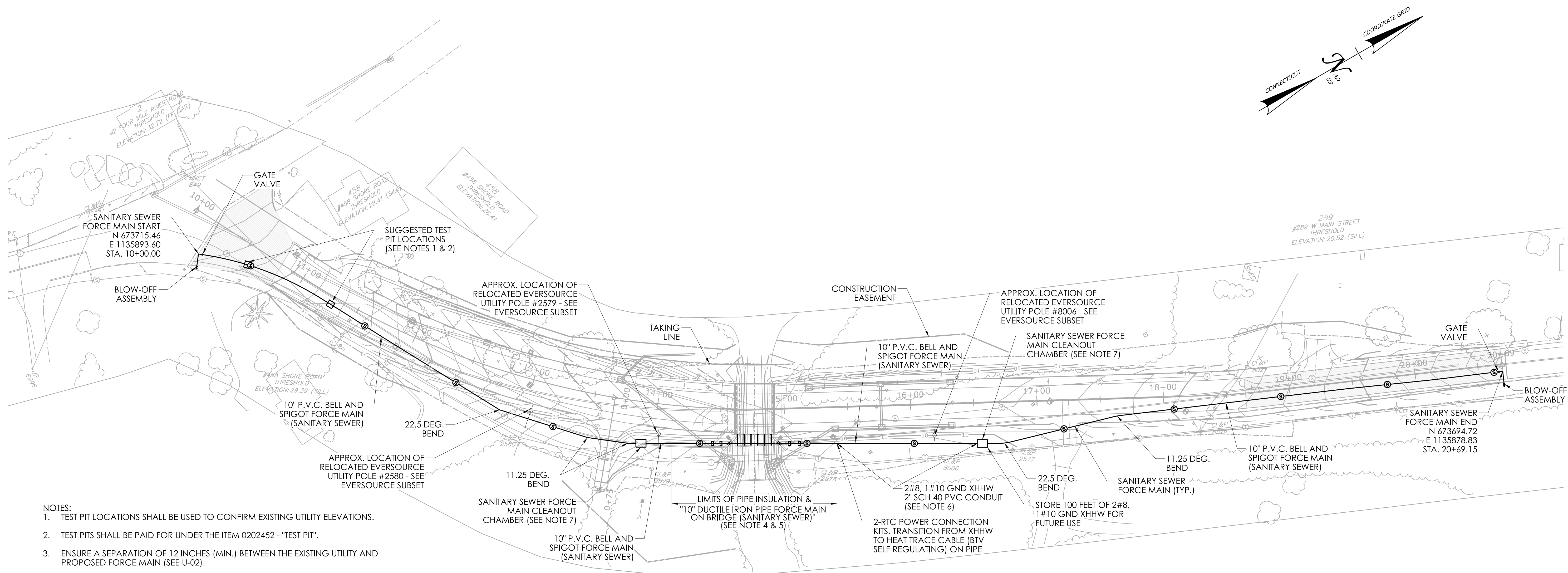
**15 - FORCE MAIN UTILITY
INDEX OF DRAWINGS**

DRAWING NUMBER	DRAWING TITLE	DRAWING NUMBER	DRAWING TITLE
U-00	INDEX OF SHEETS		
U-01	BRIDGE NO. 02713 OVERALL PLAN		
U-02	BRIDGE NO. 02713 FORCE MAIN PROFILE		
U-03	BRIDGE NO. 02713 GENERAL PLAN & ELEV.		
U-04	BRIDGE NO. 02713 STRUCTURE DETAILS		
U-05	BRIDGE NO. 06896 OVERALL PLAN		
U-06	BRIDGE NO. 06896 FORCE MAIN PROFILE		
U-07	BRIDGE NO. 06896 GENERAL PLAN & ELEV.		
U-08	SAN. SEWER DETAILS - I		
U-09	SAN. SEWER DETAILS - II		

DESIGNED BY:
FUSS & O'NEILL INC.
1 FINANCIAL PLAZA
HARTFORD, CT 06103

NEW SHEET ADDED BY ADDENDUM NO. 2

REV.	DATE	REVISION DESCRIPTION	SHEET NO.	Plotted Date: JANUARY 2025	 FUSS & O'NEILL One Financial Plaza, 15 th Floor Hartford, CT 06103 860.646.2469 www.fandco.com	SIGNATURE/ BLOCK: APPROVED BY:	PROJECT TITLE: REPLACEMENT OF BRIDGE NO. 02713 & 06896 RTE 156 OVER FOUR MILE RIVER AND ARMSTRONG BROOK	TOWN: OLD LYME EAST LYME	DRAWING TITLE: INDEX OF SHEETS	PROJECT NO. 104-175
	DESIGNER/DRAFTER: AJS/JCT									DRAWING NO. U-00
	CHECKED BY: DLW/MEG									SHEET NO. 15.01.A2
SCALE AS NOTED										

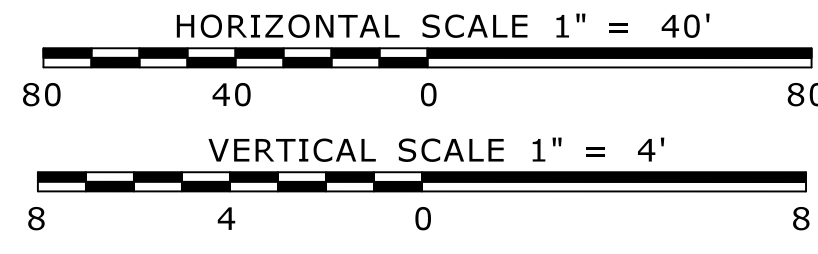
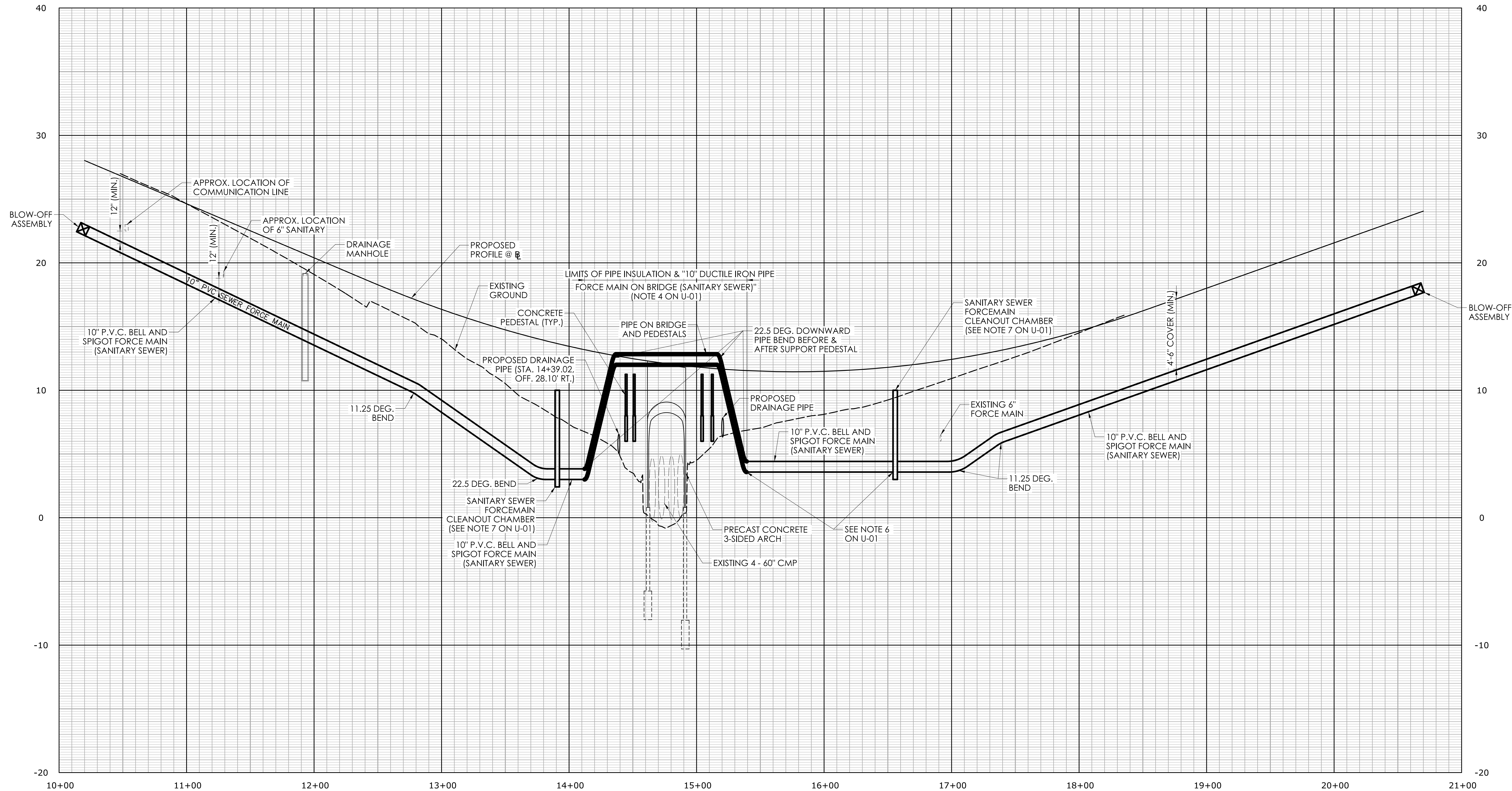


- NOTES:
- TEST PIT LOCATIONS SHALL BE USED TO CONFIRM EXISTING UTILITY ELEVATIONS.
 - TEST PITS SHALL BE PAID FOR UNDER THE ITEM 0202452 - "TEST PIT".
 - ENSURE A SEPARATION OF 12 INCHES (MIN.) BETWEEN THE EXISTING UTILITY AND PROPOSED FORCE MAIN (SEE U-02).
 - CONTRACTOR SHALL INSTALL HEAT TRACE WITHIN LIMITS OF PIPE INSULATION. HEAT TRACE SHALL BE PAID FOR UNDER THE ITEM: 1401261 - "10" DUCTILE IRON PIPE FORCE MAIN ON BRIDGE (SANITARY SEWER)".
 - CONTRACTOR SHALL INSTALL HEAT TRACING CONDUCTORS WITHIN THE LIMITS OF THE 10" INSULATED DUCTILE IRON PIPE, TERMINATING AT THE END OF THE PREINSULATED PIPE. HEAT TRACE SYSTEM SHALL BE PAID FOR UNDER THE ITEM: 1401261 - "10" DUCTILE IRON PIPE FORCE MAIN ON BRIDGE (SANITARY SEWER)".
 - CONTRACTOR SHALL INSTALL 2" PVC CONDUIT AS SHOWN ON PLANS FROM END OF INSULATION CHANNEL & TERMINATES AT CLEANOUT CHAMBER. PVC CONDUIT TO BE USED FOR FUTURE POWER CONNECTION & TO BE PAID FOR UNDER THE ITEM: 1403117 - "CLEAN OUT CHAMBER (SANITARY SEWER)".
 - FORCE MAIN CLEAN OUT CHAMBERS SHALL BE PAID FOR UNDER THE ITEM: 1403117 - "CLEANOUT CHAMBER (SANITARY SEWER)".

PLAN
SCALE: 1"=40'

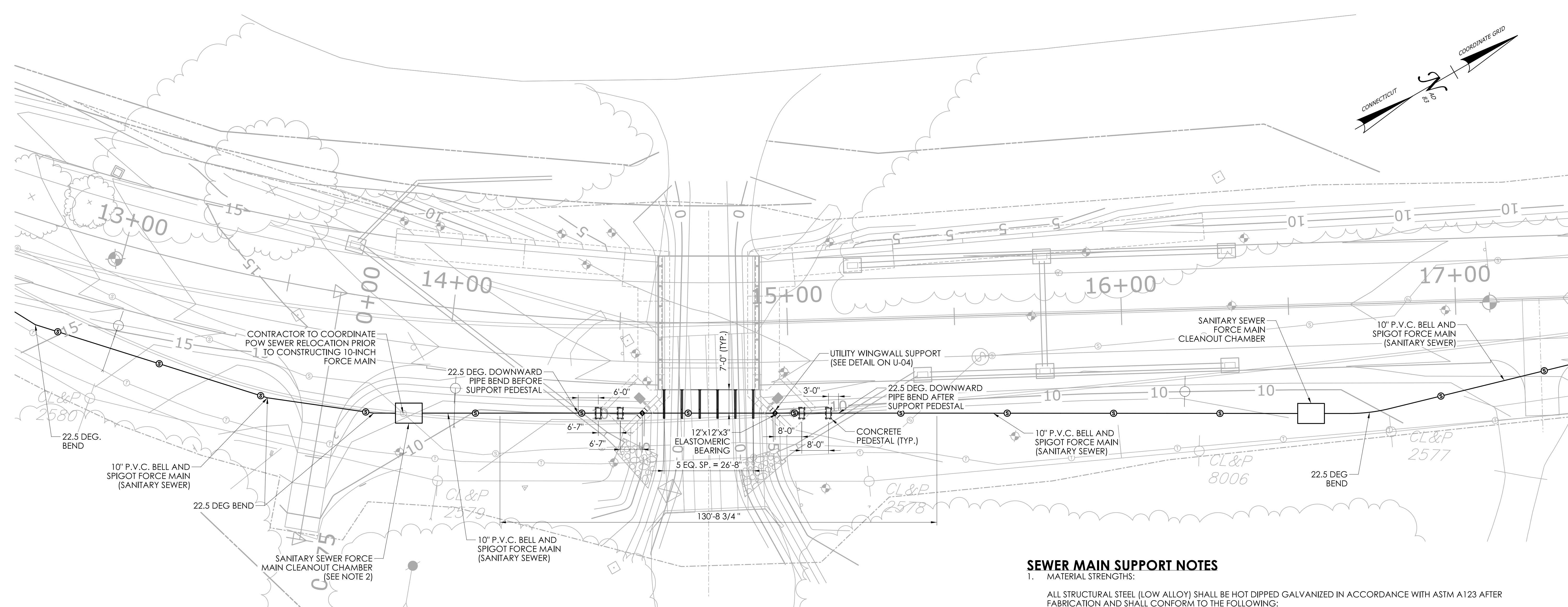
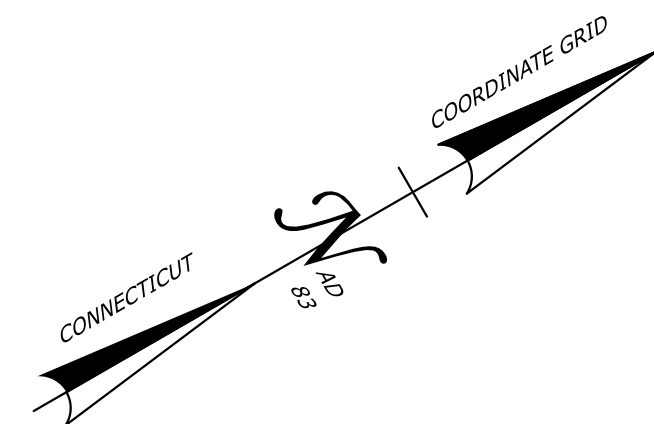
NEW SHEET ADDED BY ADDENDUM NO. 2

THE INFORMATION, INCLUDING ESTIMATED QUANTITIES OF WORK, SHOWN ON THESE SHEETS IS BASED ON LIMITED INVESTIGATIONS BY THE STATE AND IS IN NO WAY WARRANTED TO INDICATE THE CONDITIONS OF ACTUAL QUANTITIES OF WORK WHICH WILL BE REQUIRED.		DESIGNER/DRAFTER: AJS/JCT	One Financial Plaza, 15th Floor Hartford, CT 06103 860.646.2469 www.fando.com	SIGNATURE/ BLOCK:	PROJECT TITLE: REPLACEMENT OF BRIDGE NO. 02713 & 06896 RTE 156 OVER FOUR MILE RIVER AND ARMSTRONG BROOK	TOWN: OLD LYME EAST LYME	PROJECT NO. 104-175
CHECKED BY: DLW/MEG	SCALE AS NOTED	APPROVED BY:		DRAWING TITLE: BRIDGE NO. 02713 OVERALL PLAN		SHEET NO. U-01 15.02.A2	
REV. DATE REVISION DESCRIPTION SHEET NO. Plotted Date: JANUARY 2025							

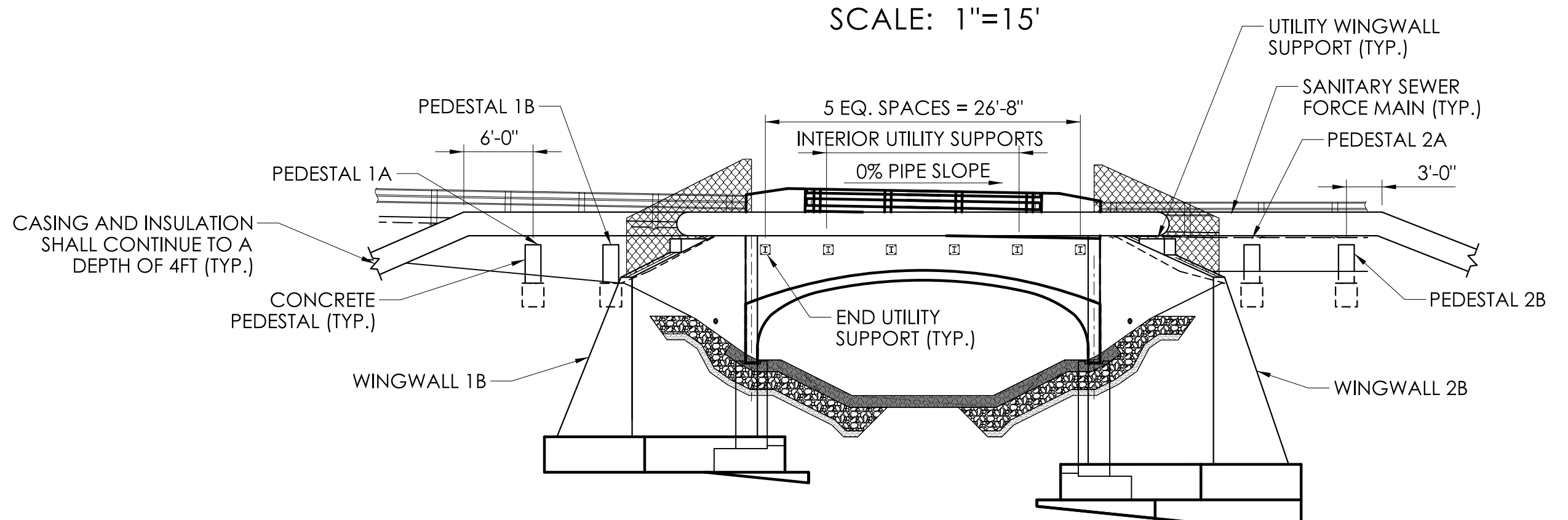


NEW SHEET ADDED BY ADDENDUM NO. 2

THE INFORMATION, INCLUDING ESTIMATED QUANTITIES OF WORK, SHOWN ON THESE SHEETS IS BASED ON LIMITED INVESTIGATIONS BY THE STATE AND IS IN NO WAY WARRANTED TO INDICATE THE CONDITIONS OF ACTUAL QUANTITIES OF WORK WHICH WILL BE REQUIRED.		DESIGNER/DRAFTER: AJS/JCT	FUSS & O'NEILL One Financial Plaza, 15th Floor Hartford, CT 06103 860.646.2469 www.fando.com	SIGNATURE/ BLOCK:	PROJECT TITLE: REPLACEMENT OF BRIDGE NO. 02713 & 06896 RTE 156 OVER FOUR MILE RIVER AND ARMSTRONG BROOK	TOWN: OLD LYME EAST LYME	PROJECT NO. 104-175
CHECKED BY: DLW/MEG	SCALE AS NOTED	APPROVED BY:		DRAWING TITLE: BRIDGE NO. 02713 FORCE MAIN PROFILE		SHEET NO. U-02 15.03.A2	
REV. DATE REVISION DESCRIPTION SHEET NO.	Plotted Date: JANUARY 2025						



PLAN
SCALE: 1"=15'



ELEVATION
SCALE: 1"=10'-0"

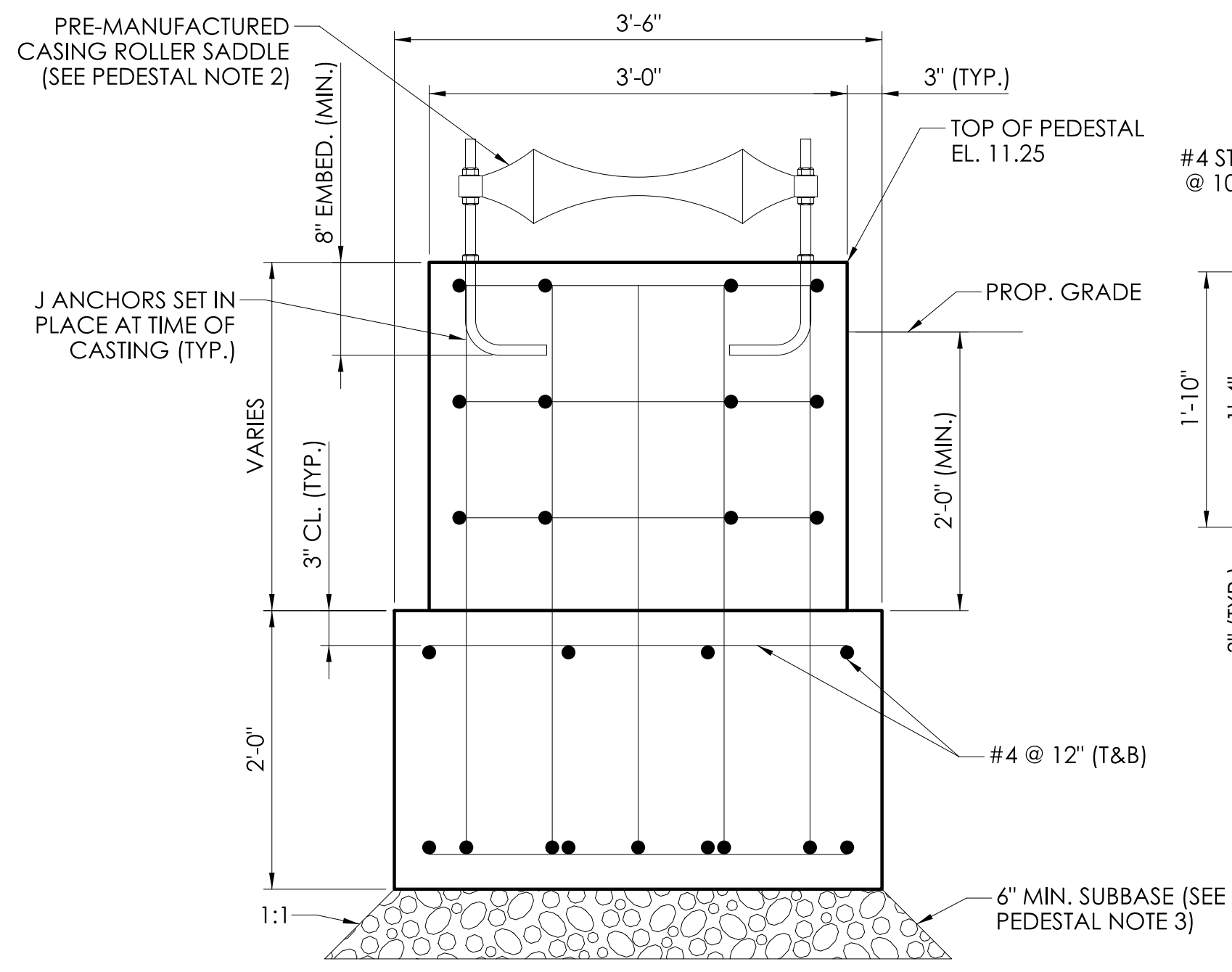
SEWER MAIN SUPPORT NOTES

- MATERIAL STRENGTHS:
 - ALL STRUCTURAL STEEL (LOW ALLOY) SHALL BE HOT DIPPED GALVANIZED IN ACCORDANCE WITH ASTM A123 AFTER FABRICATION AND SHALL CONFORM TO THE FOLLOWING:
 - PLATES AND ROLLED SHAPES.....AASHTO M270, GRADE 50
 - BOLTS.....ASTM A325, TYPE 1 (WITH A563-DH NUTS AND F436 WASHERS)
 - U-BOLTS.....ASTM A709
 - CONCRETE:
 - CLASS PCC 03360.....f_c = 3,300 PSI
 - CLASS PCC 04460.....f_c = 4,400 PSI
 - THE CONCRETE STRENGTH, f_c, USED IN DESIGN OF CONCRETE COMPONENTS IS NOTES ABOVE. THE COMPRESSIVE STRENGTH OF THE CONCRETE IN THE CONSTRUCTED COMPONENTS SHALL CONFORM TO THE REQUIREMENT OF 6.01 - CONCRETE FOR STRUCTURES, AND M.03 - PORTLAND CEMENT CONCRETE.
 - REINFORCEMENT:
 - (ASTM A615 GRADE 60).....f_y = 60,000 PSI
- WELDING DETAILS, PROCEDURES, AND TESTING METHODS SHALL CONFORM TO ANSI/AASHTO/AWS D1.5-(2015)-BRIDGE WELDING CODE, UNLESS OTHERWISE NOTED ON THE PLANS.
- THE CONTRACTOR SHALL TAKE THE PROPOER PRECAUTIONS TO ENSURE THE STABILITY OF ALL STRUCTURAL ELEMENTS UNTIL THE TOTAL STRUCTURE IS COMPLETE.
- NO ATTACHMENT SHALL BE FILLET WELDED, PLUG WELDED, OR TACK WELDED TO THE TENSION FLANGE, OTHER THAN CONNECTION PLATES WITHIN THESE LIMITS.
- PRE-MANUFACTURED PIPE ROLLERS SHALL BE PER MANUFACTURER RECOMMENDATION.
- ALL STRUCTURAL STEEL (PLATES, BEAMS, BOLTS, ETC.) SHALL BE PAID FOR UNDER THE ITEM: 0603603 - "STRUCTURAL STEEL - MISCELLANEOUS".
- ALL OTHER ITEMS RELATED TO THE LEVELING AND SUPPORT OF THE FORCE MAIN (INCLUDING THE PREINSULATED DUCTILE IRON PIPE, ELASTOMERIC BEARING PADS, ETC.) SHALL BE PAID FOR UNDER THE ITEM: 1401261 - "10" DUCTILE IRON PIPE FORCE MAIN ON BRIDGE (SANITARY SEWER)".
- THE LIMITS OF THE BURIED 10" SANITARY SEWER FORCE MAIN (U-07) SHALL BE PAID FOR UNDER "10" INSULATED DUCTILE IRON PIPE FORCE MAIN (SANITARY SEWER)". SEE SPECIAL PROVISIONS.

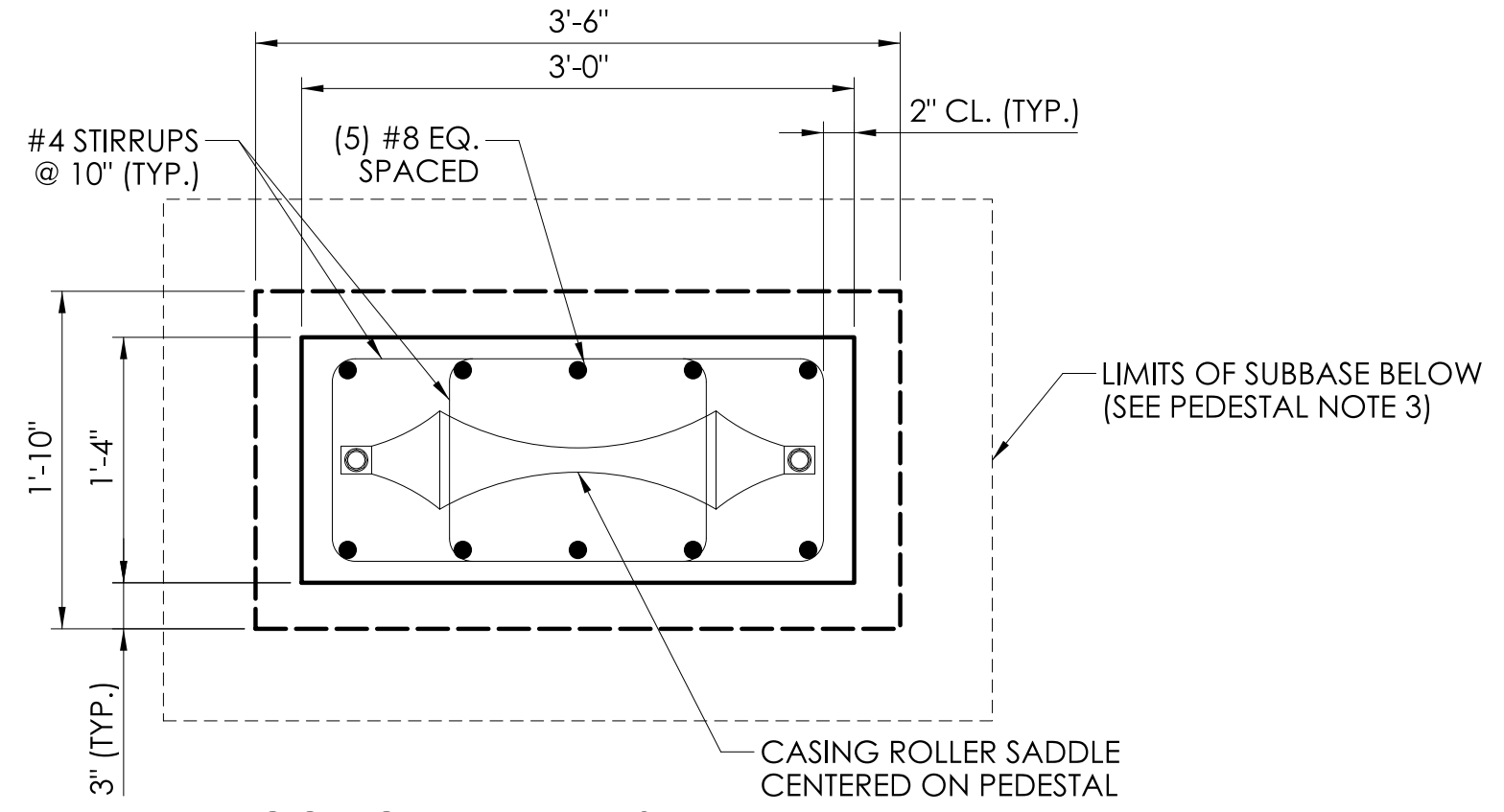
- NOTES:
- PARTIAL LIMITS OF FORCE MAIN SHOWN, SEE OVERALL PLAN ON U-01 FOR FULL LIMITS.
 - REMOVE ANY ABANDONED POW SEWER PIPE IN CONFLICT WITH THE CONSTRUCTION OF THE 10" FORCE MAIN & CLEAN OUT CHAMBERS.

NEW SHEET ADDED BY ADDENDUM NO. 2

THE INFORMATION, INCLUDING ESTIMATED QUANTITIES OF WORK, SHOWN ON THESE SHEETS IS BASED ON LIMITED INVESTIGATIONS BY THE STATE AND IS IN NO WAY WARRANTED TO INDICATE THE CONDITIONS OF ACTUAL QUANTITIES OF WORK WHICH WILL BE REQUIRED.		DESIGNER/DRAFTER: AJS/JCT CHECKED BY: DLW/MEG SCALE AS NOTED	One Financial Plaza, 15th Floor Hartford, CT 06103 860.646.2469 www.fandco.com	SIGNATURE/ BLOCK: APPROVED BY:	PROJECT TITLE: REPLACEMENT OF BRIDGE NO. 02713 & 06896 RTE 156 OVER FOUR MILE RIVER AND ARMSTRONG BROOK	TOWN: OLD LYME EAST LYME	PROJECT NO. 104-175 DRAWING NO. U-03 SHEET NO. 15.04.A2
REV.	DATE	REVISION DESCRIPTION	SHEET NO.	Plotted Date: JANUARY 2025			

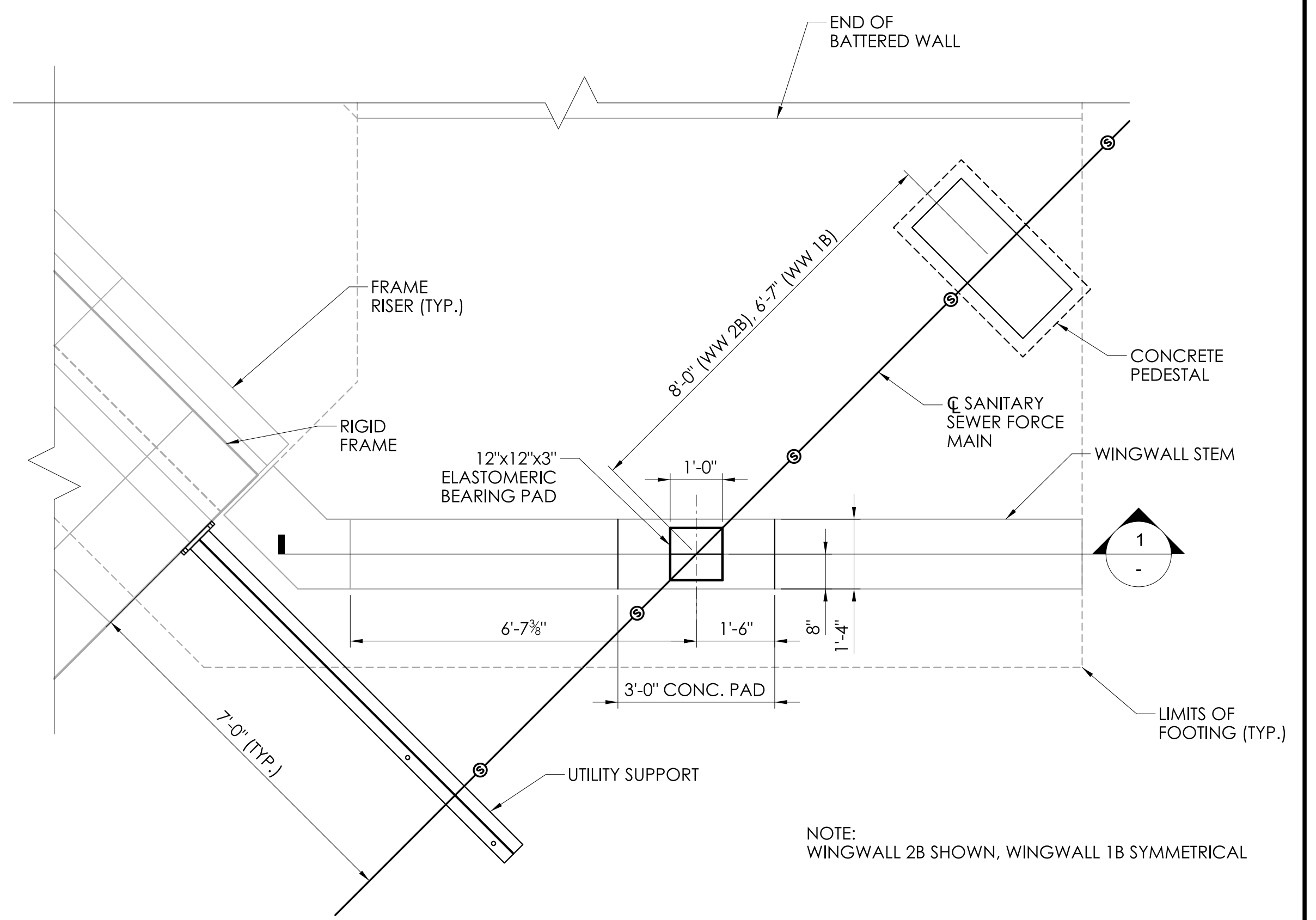


CONCRETE PEDESTAL - ELEVATION
SCALE: 1"=1'-0"



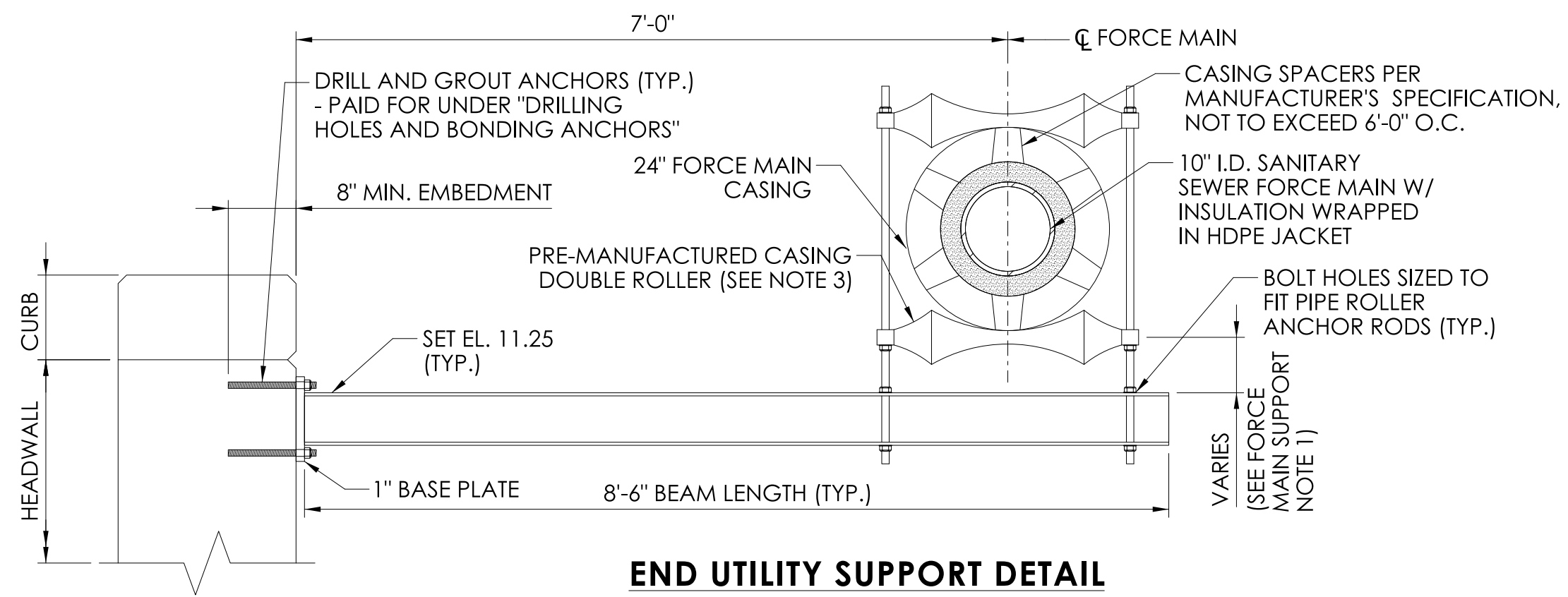
CONCRETE PEDESTAL - PLAN
SCALE: 1"=1'-0"

- PEDESTAL NOTES:**
1. CONCRETE PEDESTALS SHALL BE PAID FOR UNDER THE ITEM: 0601548 - "CONCRETE PEDESTALS"
 2. PREMANUFACTURED CASING ROLLER SADDLE (SIZE PER MANUFACTURER'S DESIGN) SHALL BE PAID FOR THE ITEM: 1401261 - UNDER "10" DUCTILE IRON PIPE FORCE MAIN ON BRIDGE (SANITARY SEWER).
 3. SUBBASE SHALL BE PAID FOR UNDER THE ITEM: 0212000 - "SUBBASE"



UTILITY WINGWALL SUPPORT PLAN
SCALE: 1/2"=1'-0"

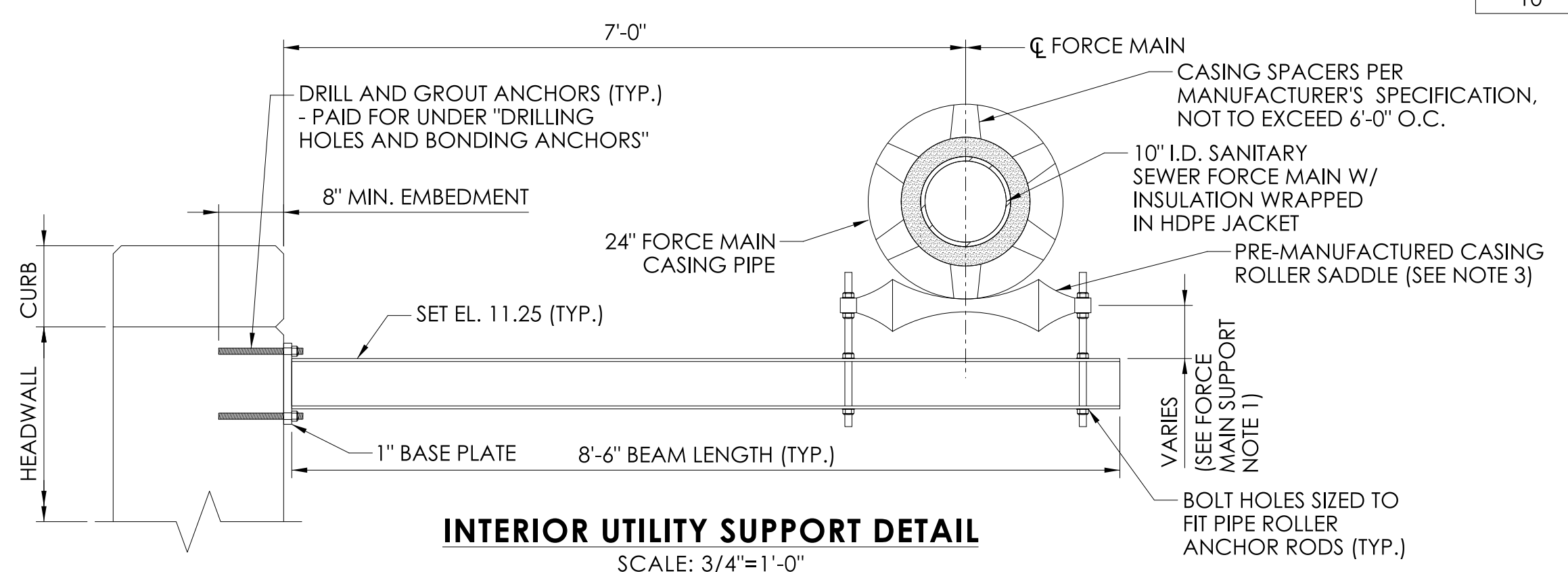
NOTE: WINGWALL 2B SHOWN, WINGWALL 1B SYMMETRICAL



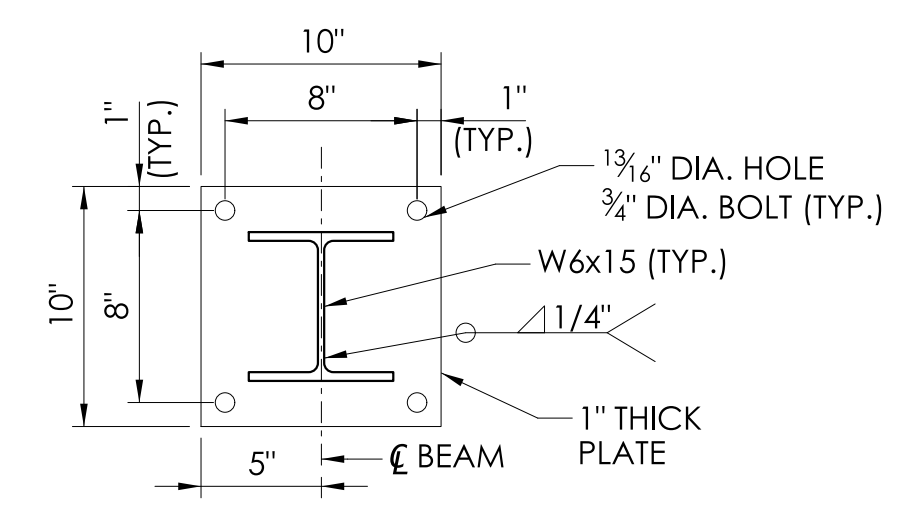
END UTILITY SUPPORT DETAIL
SCALE: 3/4"=1'-0"

- FORCE MAIN SUPPORT NOTES:**
1. ADJUST HEIGHT OF PIPE ROLLER SUPPORT TO LEVEL PIPE ALONG BRIDGE.
 2. ALL STRUCTURAL STEEL (PLATES, BEAMS, BOLTS, ETC.) SHALL BE PAID FOR UNDER THE ITEM: 0603603 - "STRUCTURAL STEEL - MISCELLANEOUS".
 3. PREMANUFACTURED CASING ROLLER SADDLE AND DOUBLE ROLLER (SIZE PER MANUFACTURER'S DESIGN) SHALL BE PAID FOR UNDER THE ITEM: 1401261 - UNDER "10" DUCTILE IRON PIPE FORCE MAIN ON BRIDGE (SANITARY SEWER).
 4. ALL OTHER ITEMS RELATED TO THE LEVELING AND SUPPORT OF THE FORCE MAIN (INCLUDING THE PREINSULATED DUCTILE IRON PIPE, ELASTOMERIC BEARING PADS, CONCRETE PAD & DOWELS, ETC.) SHALL BE PAID FOR UNDER THE ITEM: 0603602 - "DUCTILE IRON PIPE SUPPORTED ON BRIDGE".

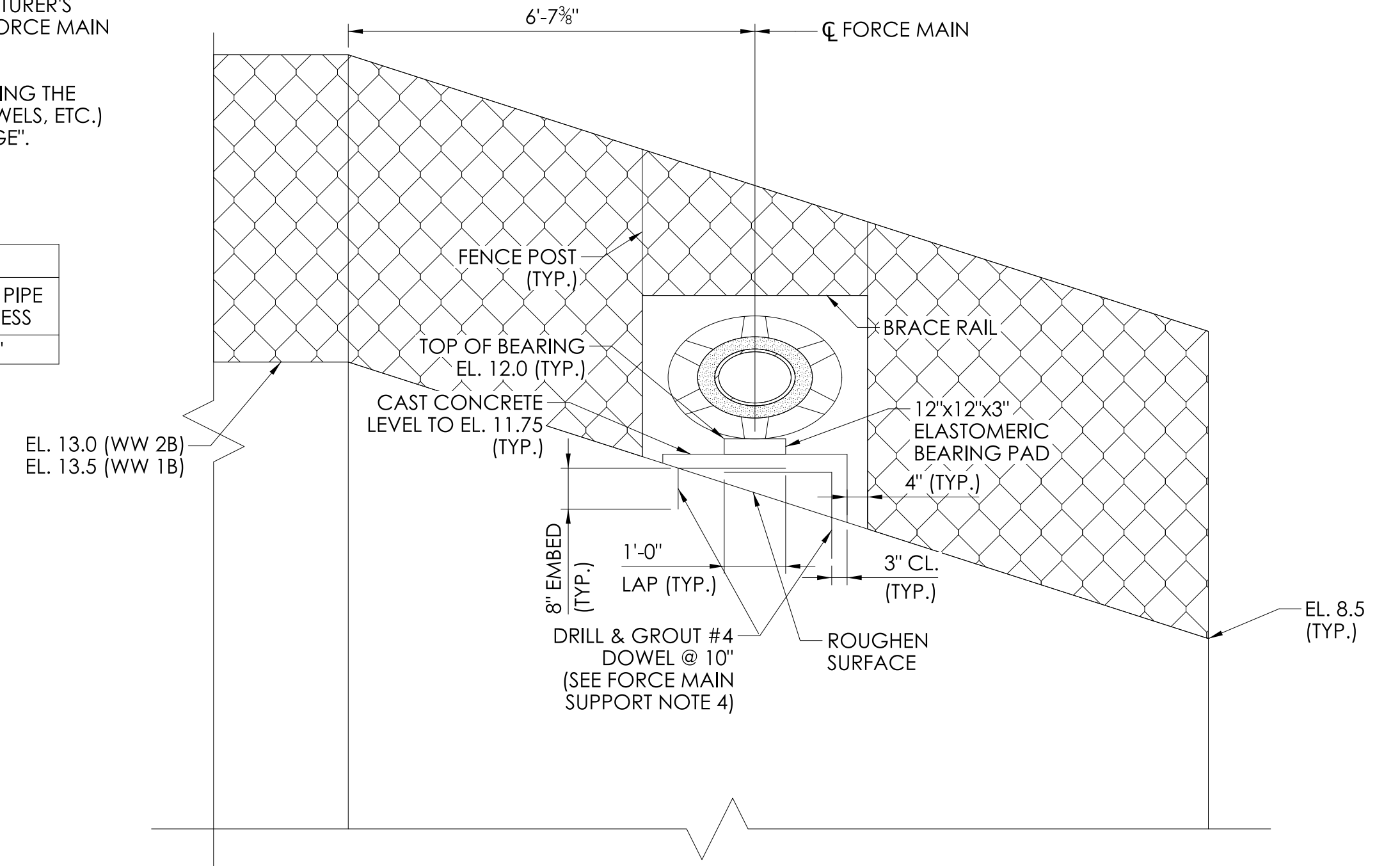
PIPE DIMENSIONS						
CARRIER PIPE SIZE	PIPE O.D.	INSULATION THICKNESS	HDPE JACKET O.D.	HDPE JACKET WALL	CASING PIPE O.D.	CASING PIPE THICKNESS
10"	11.10"	2.21"	15.87"	.175"	24"	.281"



INTERIOR UTILITY SUPPORT DETAIL
SCALE: 3/4"=1'-0"



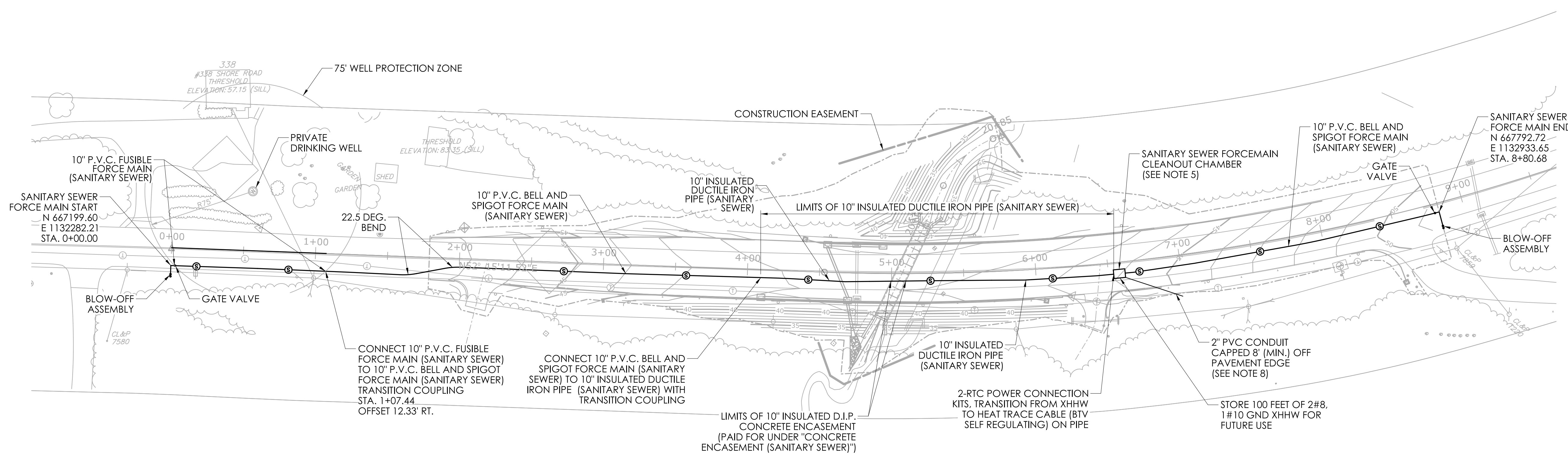
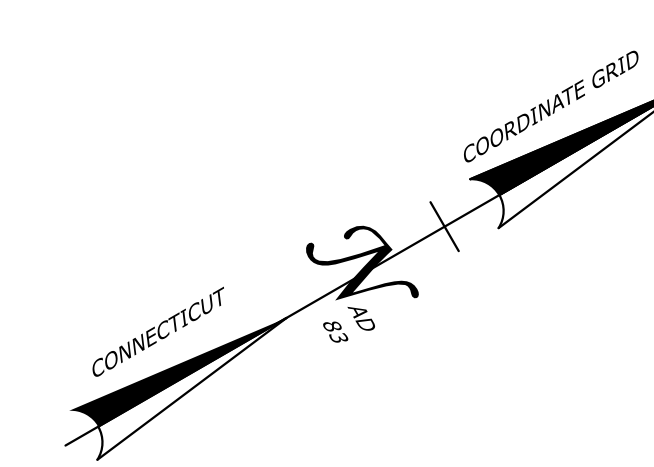
ANCHOR PLATE DETAIL
SCALE: 1 1/2"=1'-0"



UTILITY WINGWALL SUPPORT SECTION
SCALE: 1/2"=1'-0"

NEW SHEET ADDED BY ADDENDUM NO. 2

THE INFORMATION, INCLUDING ESTIMATED QUANTITIES OF WORK, SHOWN ON THESE SHEETS IS BASED ON LIMITED INVESTIGATIONS BY THE STATE AND IS IN NO WAY WARRANTED TO INDICATE THE CONDITIONS OF ACTUAL QUANTITIES OF WORK WHICH WILL BE REQUIRED.		DESIGNER/DRAFTER: AJS/JCT CHECKED BY: DLW/MEG SCALE AS NOTED	One Financial Plaza, 15th Floor Hartford, CT 06103 860.646.2469 www.fando.com	SIGNATURE/BLOCK: APPROVED BY:	PROJECT TITLE: REPLACEMENT OF BRIDGE NO. 02713 & 06896 RTE 156 OVER FOUR MILE RIVER AND ARMSTRONG BROOK	TOWN: OLD LYME EAST LYME DRAWING TITLE: BRIDGE NO. 02713 STRUCTURE DETAILS	PROJECT NO. 104-175 DRAWING NO. U-04 SHEET NO. 15.05.A2
REV.	DATE	REVISION DESCRIPTION	SHEET NO.	Plotted Date: JANUARY 2025			

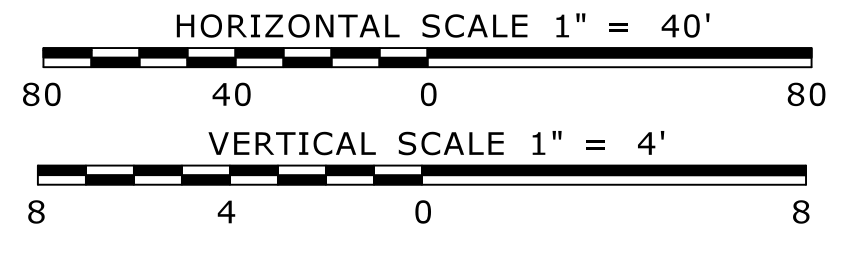
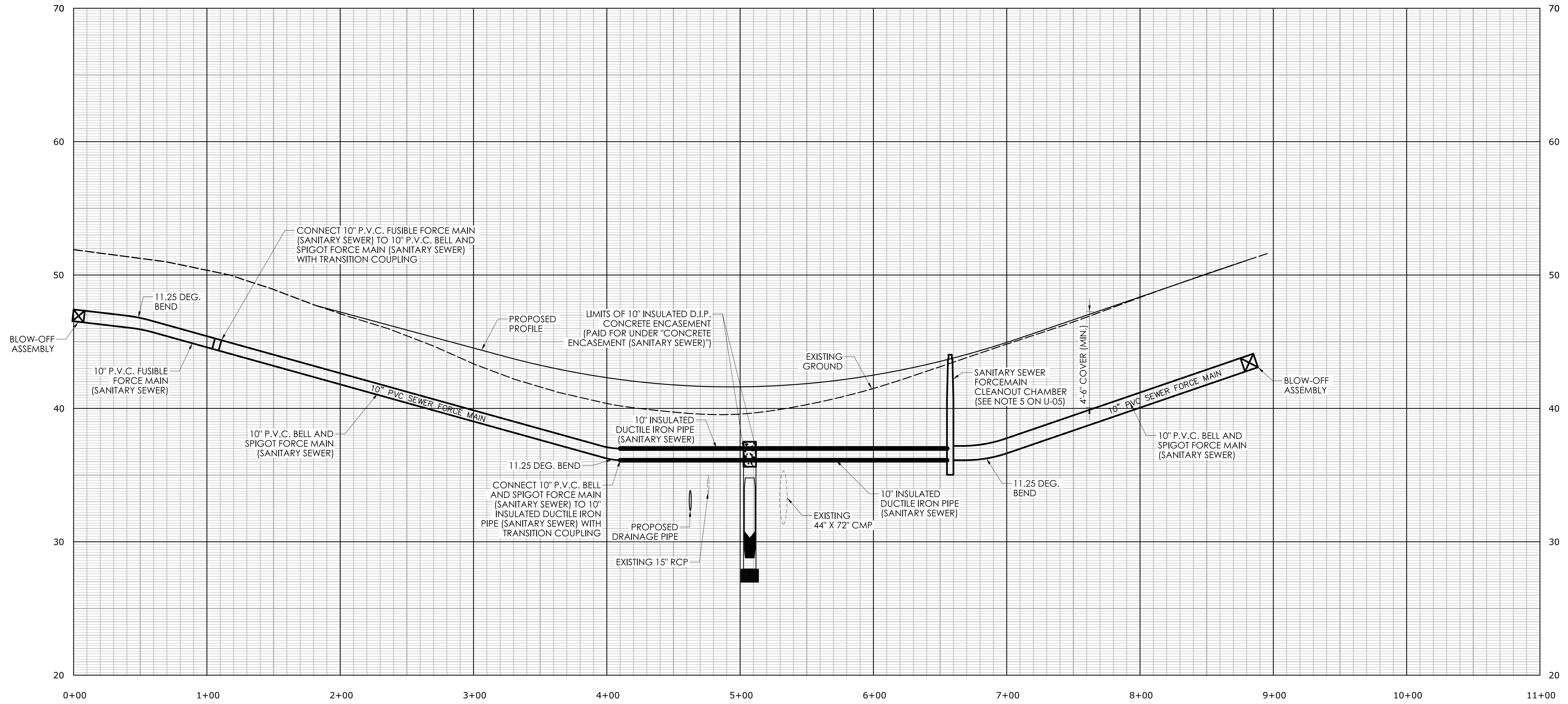


- NOTES:
- FOR AREAS WHERE FORCE MAIN ENCLOSES ON THE 25-FOOT RADIUS OF A PRIVATE DRINKING WELL, FUSIBLE C900 FORCE MAIN SHALL BE INSTALLED IN A FUSIBLE C900 CASING PIPE.
 - FOR AREAS WHERE FORCE MAIN IS INSTALLED BETWEEN THE 25-FOOT AND 75-FOOT OF A PRIVATE DRINKING WELL, FUSIBLE C900 FORCE MAIN SHALL BE INSTALLED.
 - FOR AREAS OUTSIDE OF THE 75-FOOT RADIUS OF A PRIVATE DRINKING WELL, BELL AND SPIGOT FORCE MAIN SHALL BE INSTALLED.
 - LIMITS OF WELL PROTECTION ZONES TO BE VERIFIED BY FIELD ENGINEER AND CONTRACTOR REPRESENTATIVE.
 - MANHOLE CASTINGS MUST BE INSTALLED OUTSIDE THE WHEEL PATH OF VEHICLES TRAVELING ON ROUTE 156. THEY SHALL BE INSTALLED IN THE CENTER OF THE TRAVEL LANE AND ROADWAY OR ENTIRELY OUTSIDE THE TRAVEL LANE. FORCE MAIN CLEAN OUT CHAMBERS SHALL BE PAID FOR UNDER THE ITEM: 1403117 - "CLEANOUT CHAMBER (SANITARY SEWER)".
 - CONTRACTOR SHALL INSTALL HEAT TRACE WITHIN LIMITS OF PIPE INSULATION. HEAT TRACE SHALL BE PAID FOR UNDER THE ITEM: 1400080 - "10\"/>

PLAN
SCALE: 1"=40'

NEW SHEET ADDED BY ADDENDUM NO. 2

THE INFORMATION, INCLUDING ESTIMATED QUANTITIES OF WORK, SHOWN ON THESE SHEETS IS BASED ON LIMITED INVESTIGATIONS BY THE STATE AND IS IN NO WAY WARRANTED TO INDICATE THE CONDITIONS OF ACTUAL QUANTITIES OF WORK WHICH WILL BE REQUIRED.		DESIGNER/DRAFTER: AJS/JCT	FUSS & O'NEILL One Financial Plaza, 15th Floor Hartford, CT 06103 860.646.2469 www.fando.com	SIGNATURE/ BLOCK:	PROJECT TITLE: REPLACEMENT OF BRIDGE NO. 02713 & 06896 RTE 156 OVER FOUR MILE RIVER AND ARMSTRONG BROOK	TOWN: OLD LYME EAST LYME	PROJECT NO. 104-175
CHECKED BY: DLW/MEG	SCALE AS NOTED	APPROVED BY:		DRAWING TITLE: BRIDGE NO. 06896 OVERALL PLAN		DRAWING NO. U-05	
REV. DATE REVISION DESCRIPTION SHEET NO. Plotted Date: JANUARY 2025							SHEET NO. 15.06.A2



NEW SHEET ADDED BY ADDENDUM NO. 2

REV.	DATE	REVISION DESCRIPTION	SHEET NO.

THE INFORMATION, INCLUDING ESTIMATED QUANTITIES OF WORK, SHOWN ON THESE SHEETS IS BASED ON LIMITED INVESTIGATIONS BY THE STATE AND IS IN NO WAY WARRANTED TO INDICATE THE CONDITIONS OF ACTUAL QUANTITIES OF WORK WHICH WILL BE REQUIRED.

Plotted Date: JANUARY 2025

DESIGNER/DRAFTER:
AJS/JCT

CHECKED BY:
DLW/MEG

SCALE AS NOTED

One Financial Plaza, 15th Floor
Hartford, CT 06103
860.646.2469
www.fando.com

SIGNATURE/
BLOCK:

APPROVED BY:

PROJECT TITLE:
**REPLACEMENT OF
BRIDGE NO. 02713 & 06896
RTE 156 OVER FOUR MILE RIVER
AND ARMSTRONG BROOK**

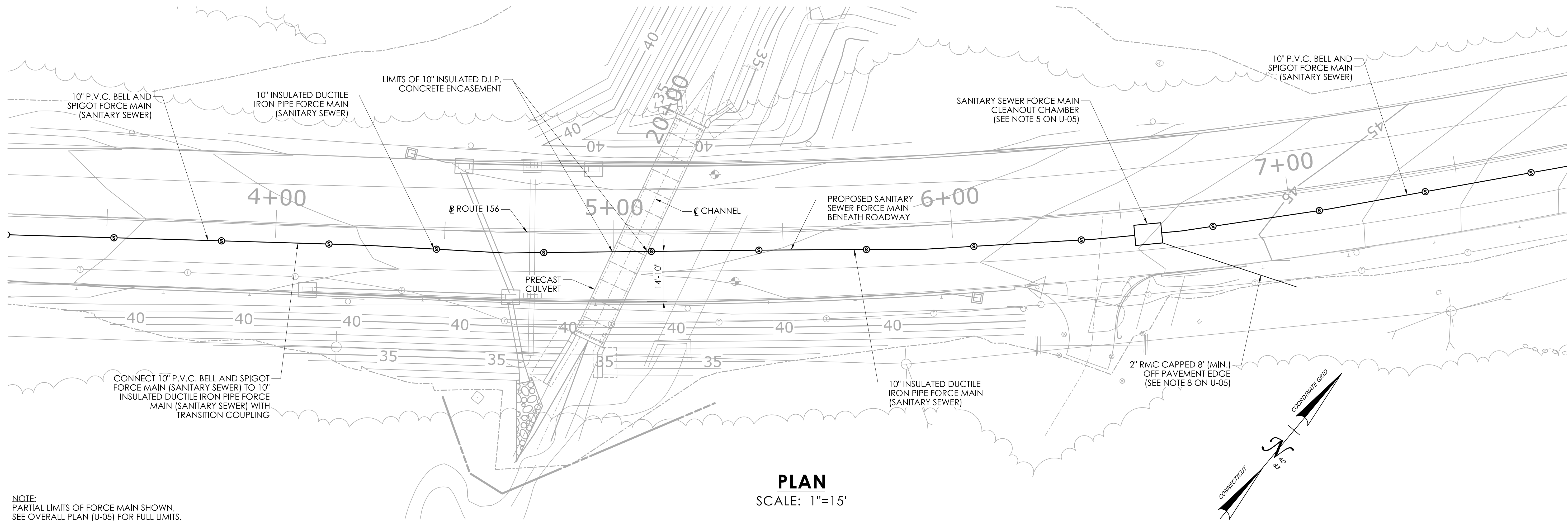
TOWN:
**OLD LYME
EAST LYME**

DRAWING TITLE:
**BRIDGE NO. 06896
FORCE MAIN PROFILE**

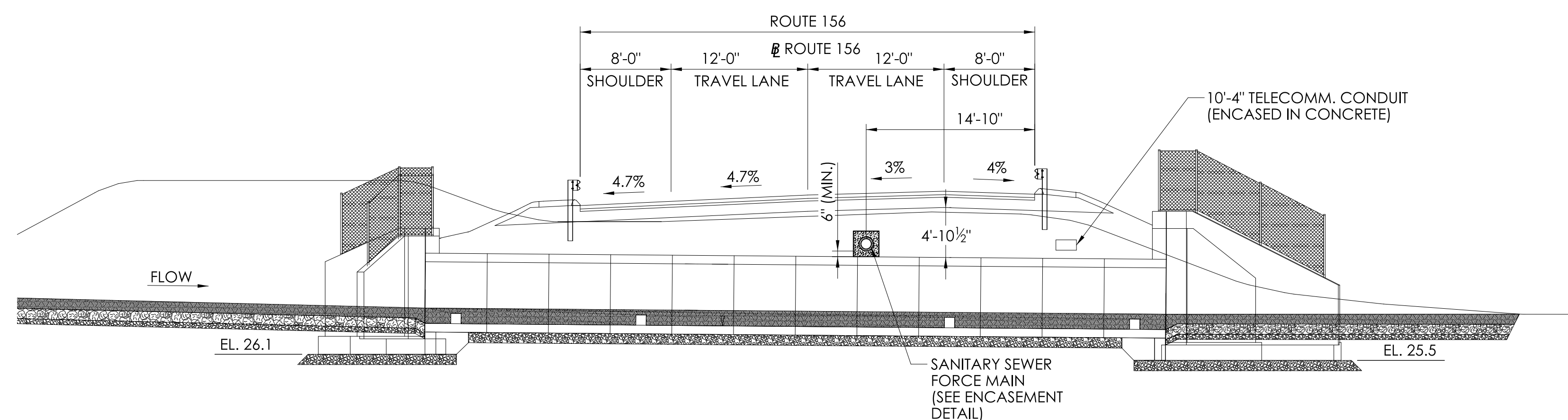
PROJECT NO.
104-175

DRAWING NO.
U-06

SHEET NO.
15.07.A2

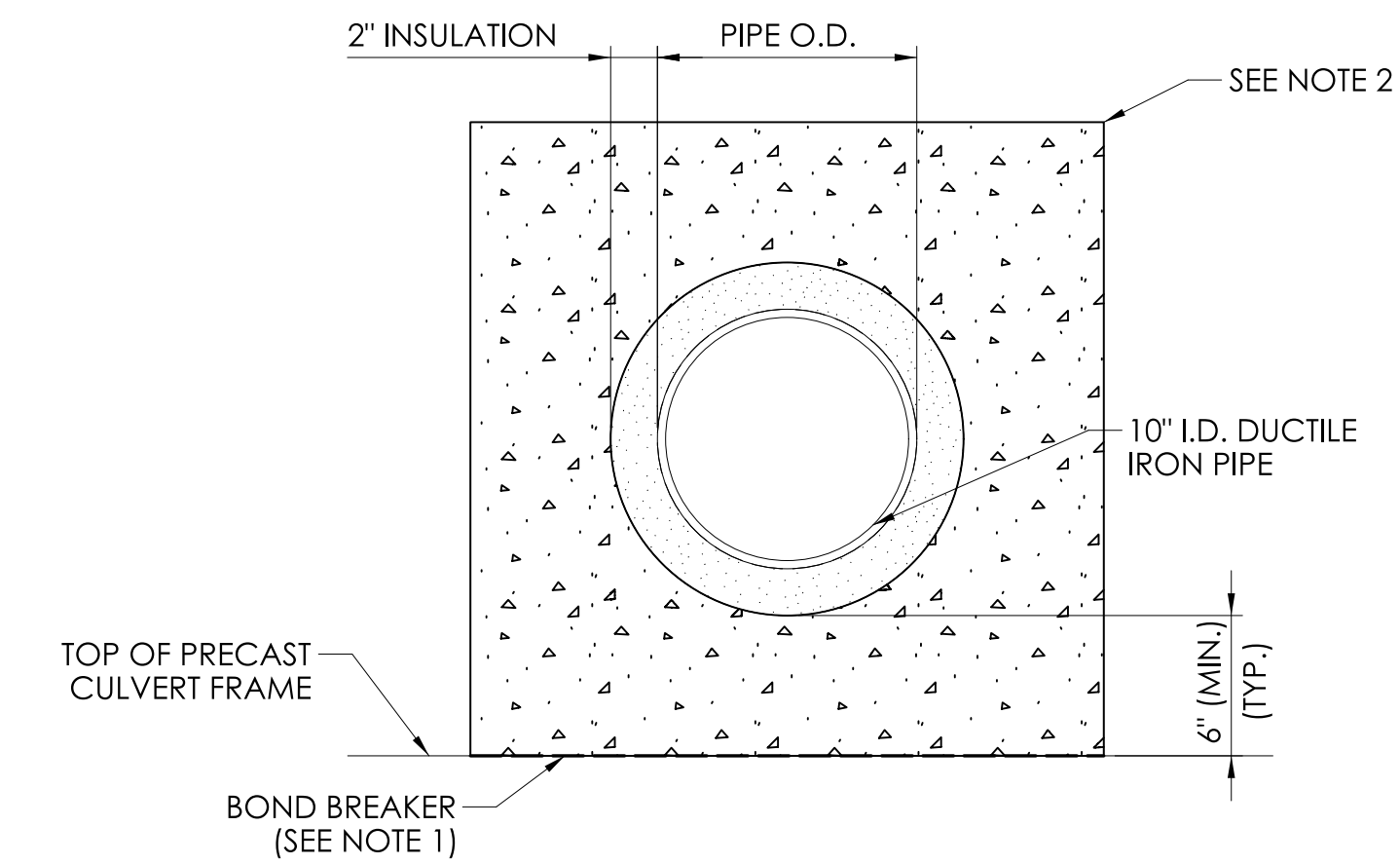


NOTE:
PARTIAL LIMITS OF FORCE MAIN SHOWN.
SEE OVERALL PLAN (U-05) FOR FULL LIMITS.



LONGITUDINAL SECTION ALONG CHANNEL CENTERLINE

SCALE: 1/8"=1'-0"



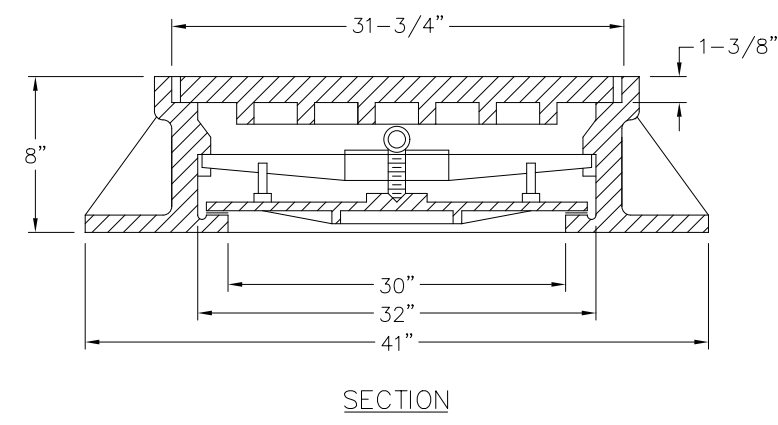
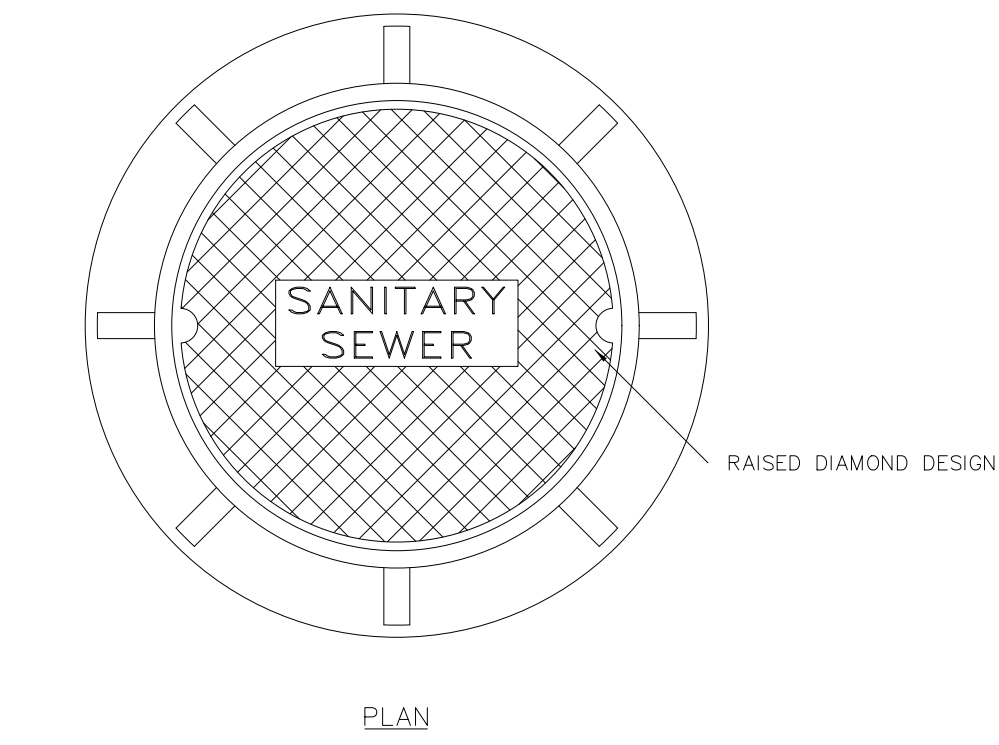
CONCRETE ENCASUREMENT DETAIL

SCALE: 1 1/2"=1'-0"

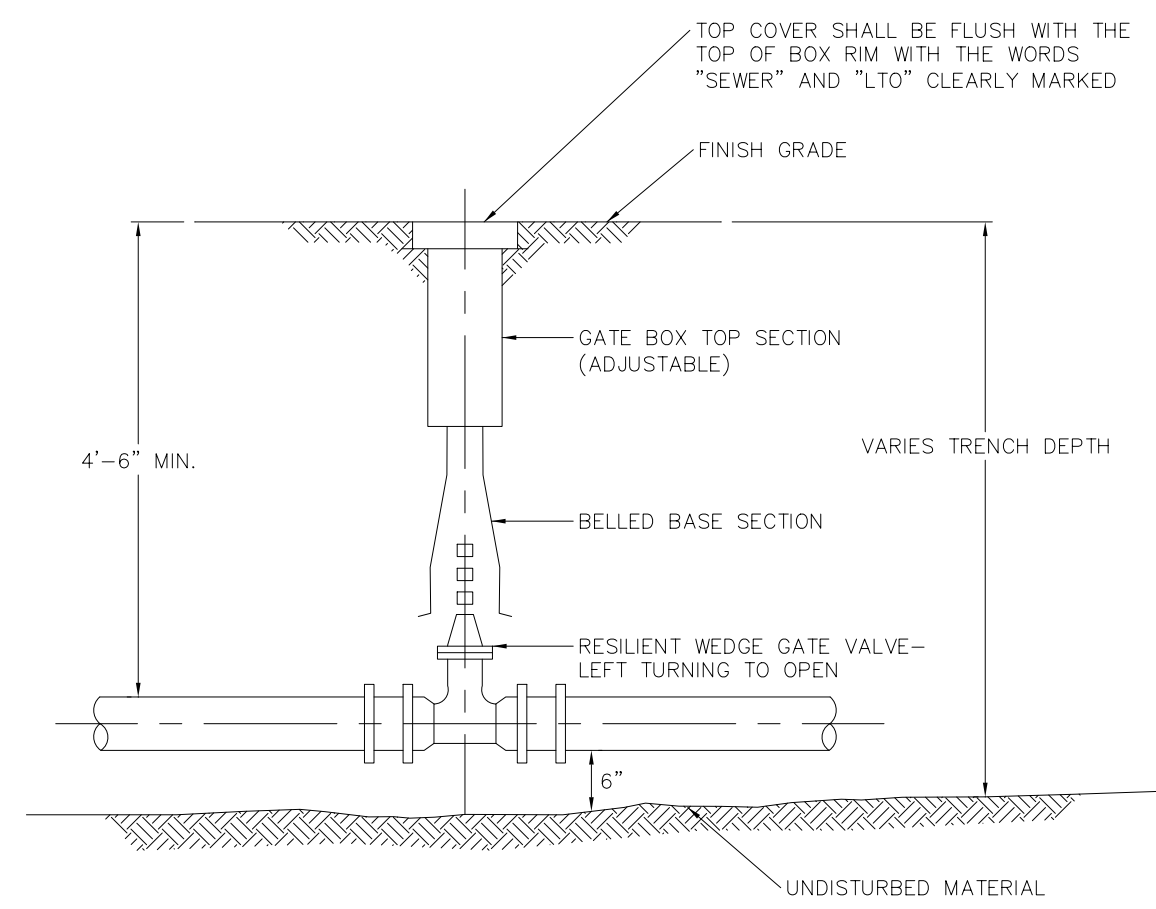
- NOTES:
- BOND BREAKER SHALL BE USED BETWEEN THE SURFACE OF THE PRECAST CULVERT FRAME AND PIPE CONCRETE ENCASUREMENT. BOND BREAKER SHALL BE PAID FOR UNDER THE ITEM: 1401973 - "CONCRETE ENCASUREMENT (SANITARY SEWER)"
 - CONCRETE FOR PIPE ENCASUREMENT SHALL MEET THE REQUIREMENTS OF CLASS PCC03360 AS SPECIFIED IN M.03.

NEW SHEET ADDED BY ADDENDUM NO. 2

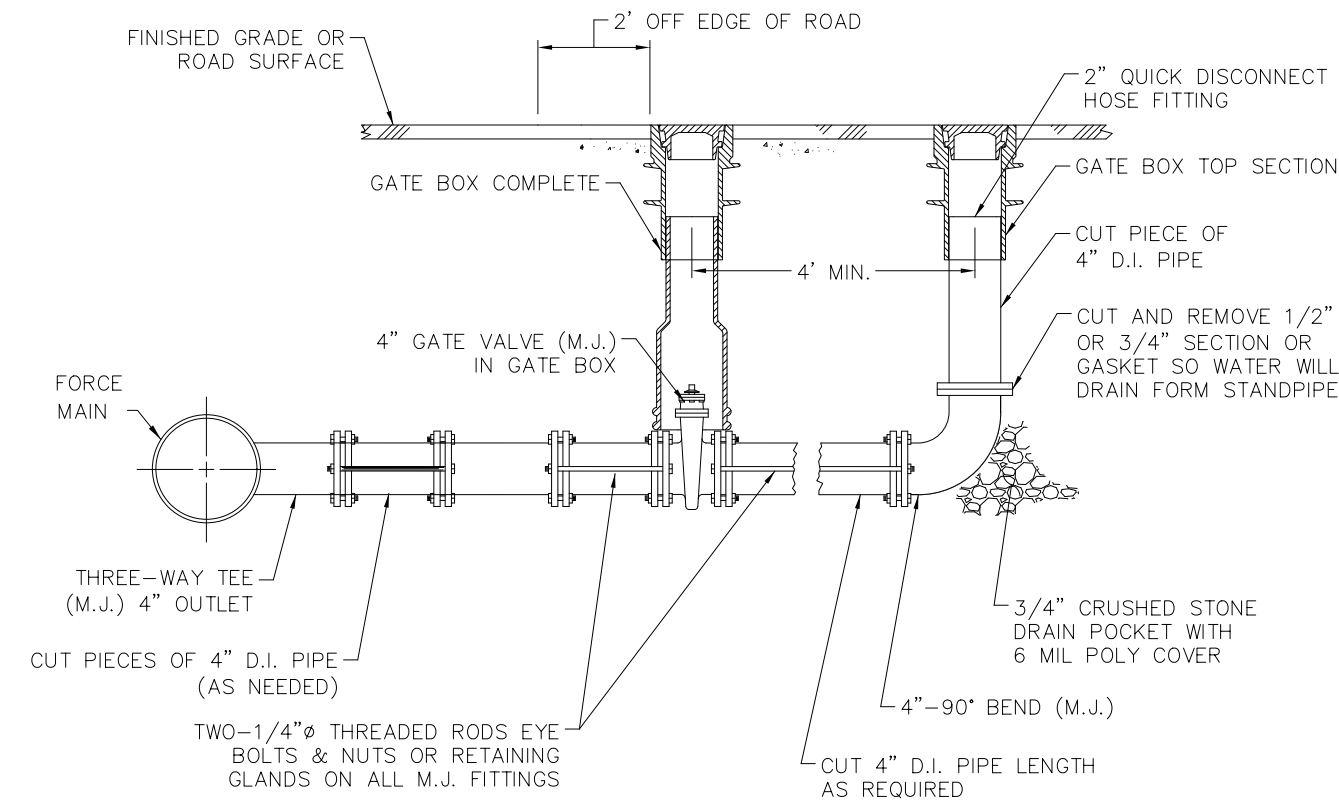
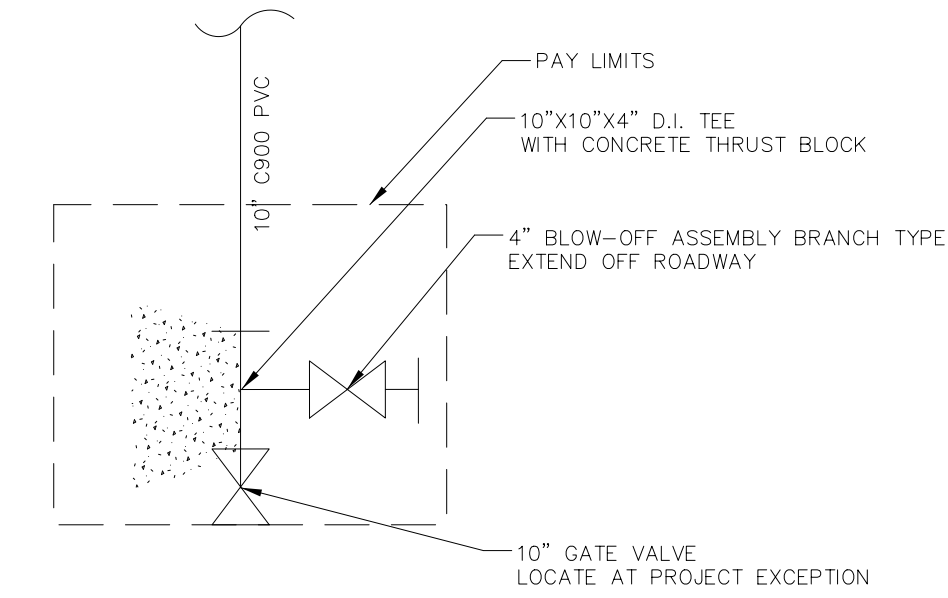
THE INFORMATION, INCLUDING ESTIMATED QUANTITIES OF WORK, SHOWN ON THESE SHEETS IS BASED ON LIMITED INVESTIGATIONS BY THE STATE AND IS IN NO WAY WARRANTED TO INDICATE THE CONDITIONS OF ACTUAL QUANTITIES OF WORK WHICH WILL BE REQUIRED.		DESIGNER/DRAFTER: AJS/JCT	FUSS & O'NEILL One Financial Plaza, 15th Floor Hartford, CT 06103 860.646.2469 www.fando.com	SIGNATURE/ BLOCK:	PROJECT TITLE: REPLACEMENT OF BRIDGE NO. 02713 & 06896 RTE 156 OVER FOUR MILE RIVER AND ARMSTRONG BROOK	TOWN: OLD LYME EAST LYME	PROJECT NO. 104-175
CHECKED BY: DLW/MEG	SCALE AS NOTED	APPROVED BY:		DRAWING TITLE: BRIDGE NO. 06896 GENERAL PLAN & ELEV.	SHEET NO. U-07 15.08.A2		
REV. DATE REVISION DESCRIPTION SHEET NO.	Plotted Date: JANUARY 2025						



WATERTIGHT MANHOLE FRAME AND COVER
SCALE: NOT TO SCALE



ISOLATION GATE VALVE
SCALE: NOT TO SCALE

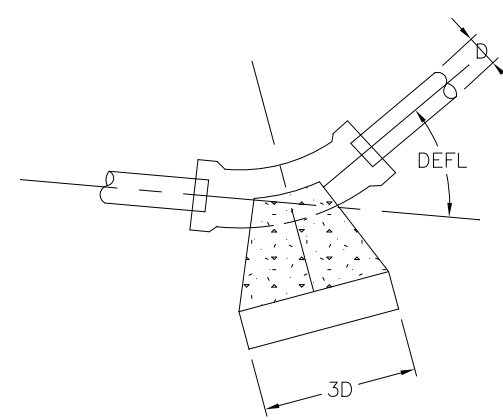


4" BLOW-OFF ASSEMBLY BRANCH TYPE
SCALE: NOT TO SCALE

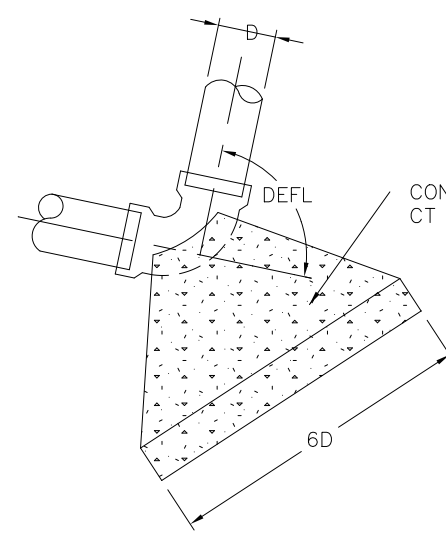
PPE DIA. (INCHES)	MINIMUM THRUST BLOCK VOLUME (CUBIC YARDS)
4	0.2
6	0.25
8	0.3
10	0.35
12	0.4
16	0.7

PPE DIA. (INCHES)	MINIMUM THRUST BLOCK VOLUME (CUBIC YARDS)
4	0.25
6	0.3
8	0.5
10	0.7
12	1.0
16	1.6

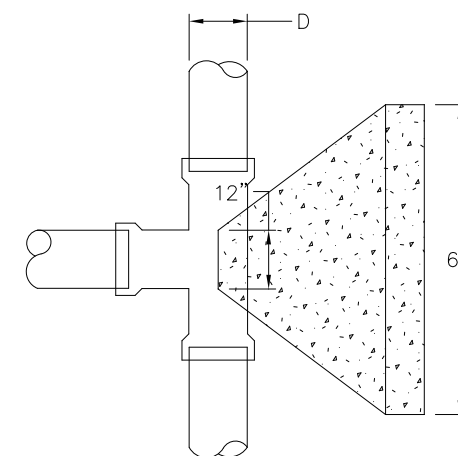
NOTES:
1. CONCRETE FOR THRUST BLOCKS SHALL MEET THE REQUIREMENTS OF CLASS PCC03360 AS SPECIFIED IN M.03.



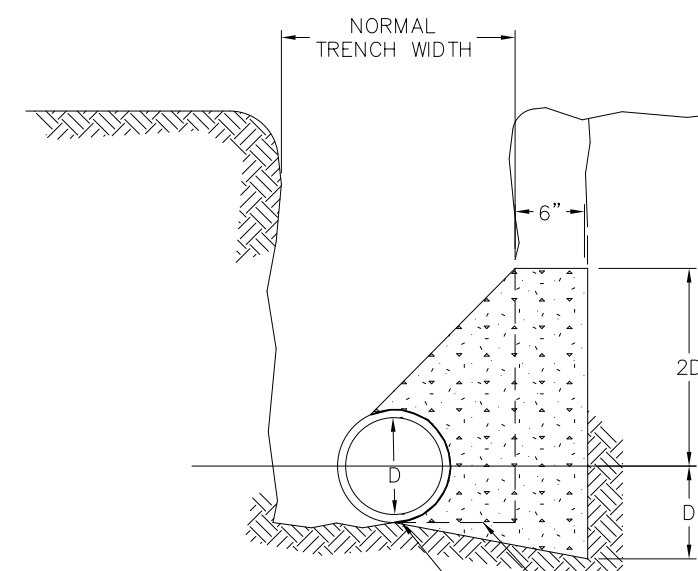
PLAN ELBOW - DEFLECT LESS THAN 50



PLAN ELBOW - DEFLECT MORE THAN 50

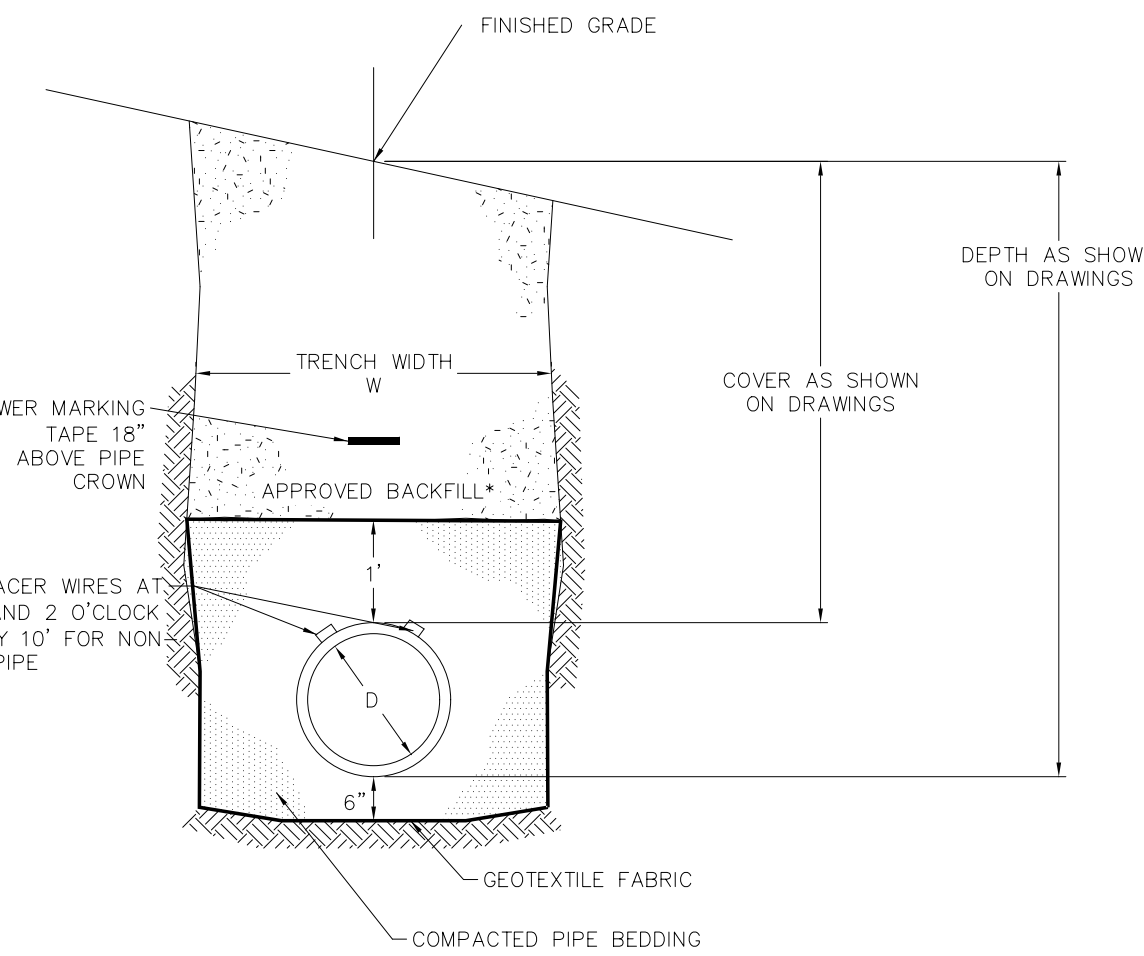


PLAN VIEW - TEE



SECTION

TRENCH SHALL BE EXCAVATED TO FIRM MATERIAL IMMEDIATELY PRIOR TO POURING CONCRETE



FORCE MAIN TRENCH
SCALE: NOT TO SCALE

SANITARY SEWER PIPE TRENCH NOTES


- DEPTH OF SEWER AND TYPE OF PIPE SHALL BE AS SHOWN ON DRAWINGS.
- SEWER TRENCHES MAY BE EXCAVATED WIDER THAN TRENCH WIDTH W ABOVE THE "LINE OF NARROW TRENCH LIMIT," AT THE CONTRACTOR'S EXPENSE.
- BELOW THE "LINE OF NARROW TRENCH LIMIT" THE TRENCH SHALL NOT BE EXCAVATED BEYOND THE TRENCH WIDTH W, WHICH IS APPLIED AT THE TOP OF BEDDING MATERIAL.
- TRENCH WIDTHS AND PAYMENT LIMIT SHALL BE AS FOLLOWS:

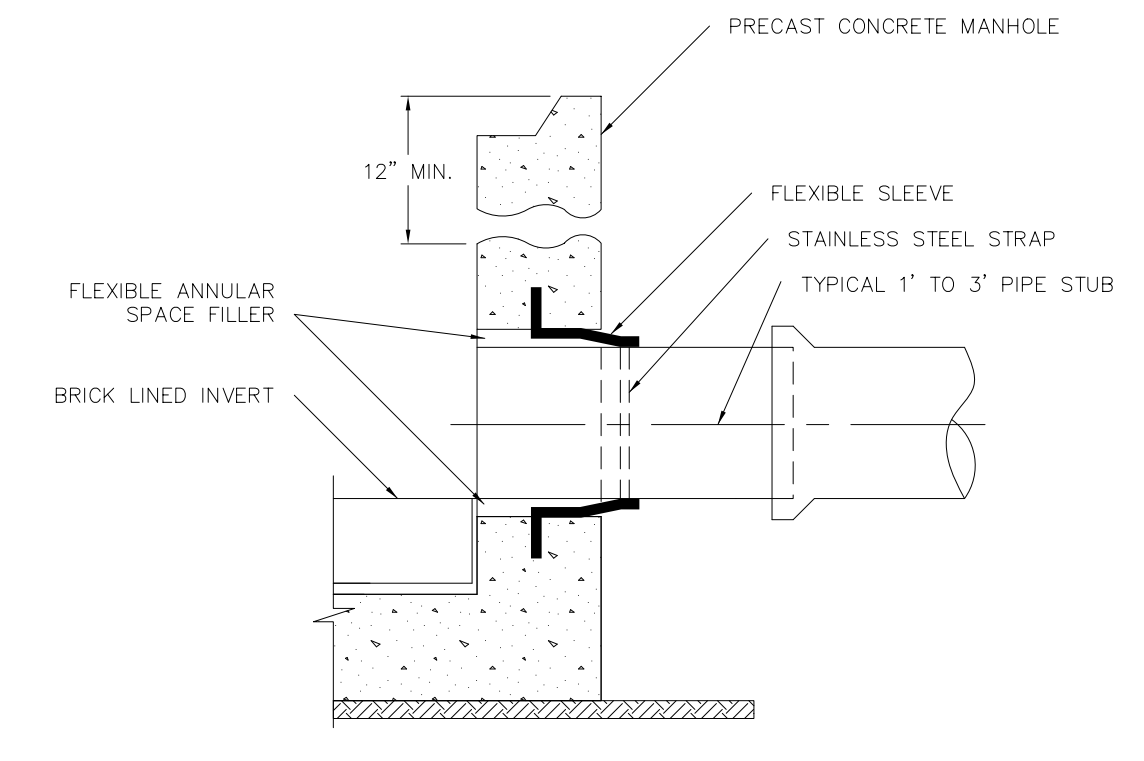
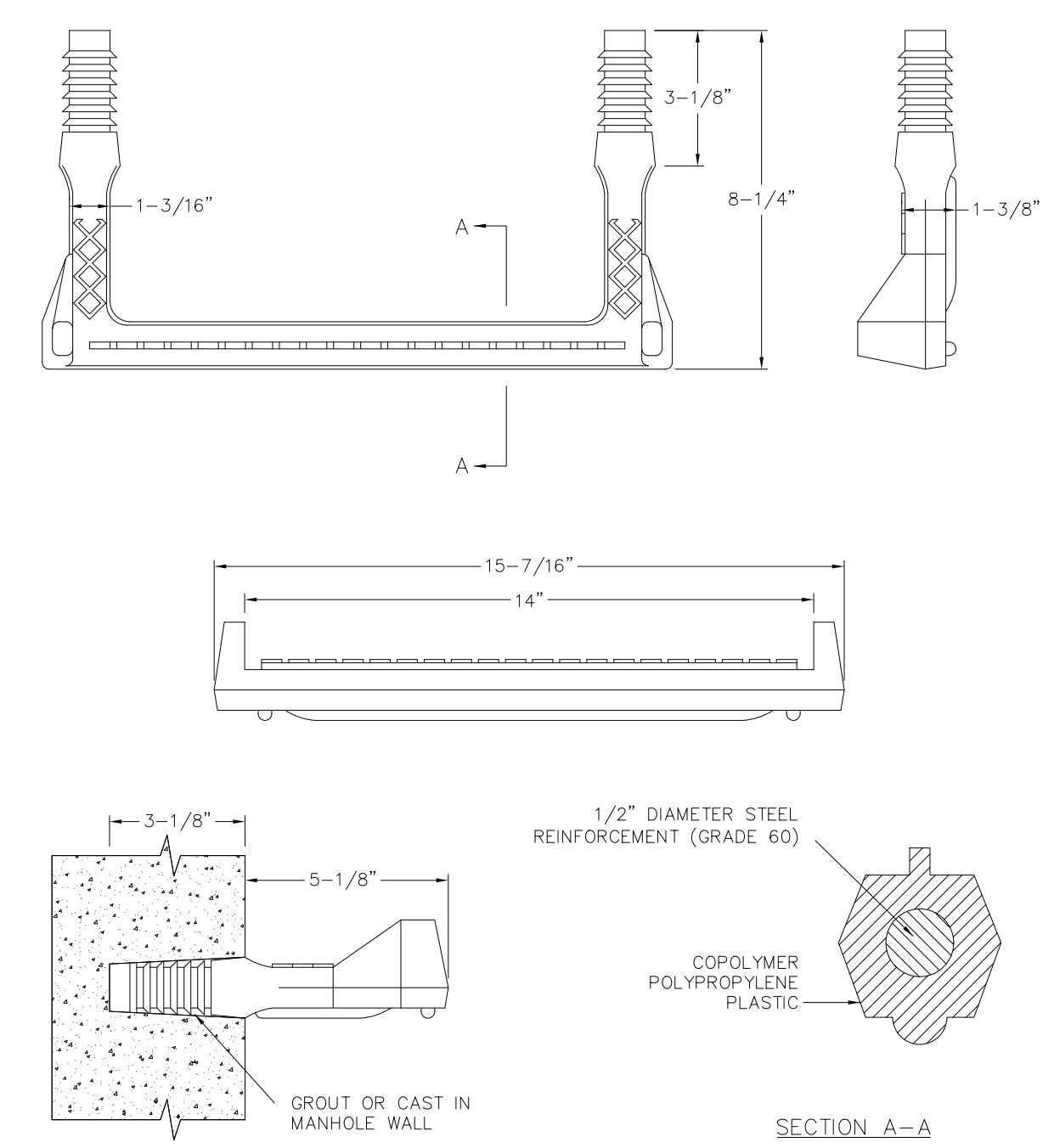
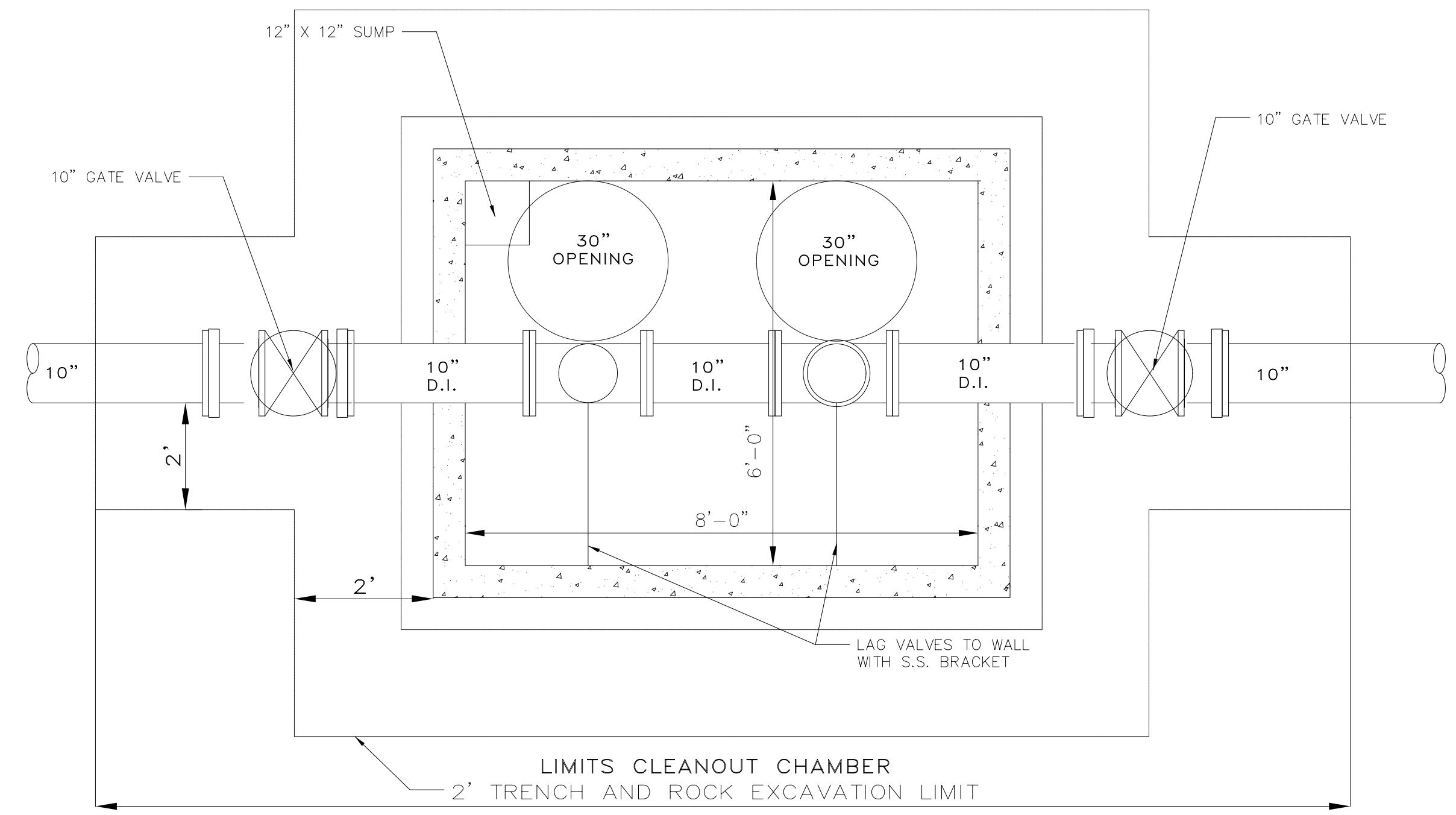
DIAMETER PIPE "I.D."	TRENCH WIDTH "W"	PAYMENT LIMIT
LESS THAN OR EQUAL TO 30"	2'-0" + PIPE I.D.	2'-0" + PIPE I.D.
GREATER THAN 30"	3'-0" + PIPE I.D.	3'-0" + PIPE I.D.

- WHEN MULTIPLE PIPES ARE INSTALLED IN THE SAME TRENCH, THE TRENCH WIDTH "W" WILL BE BASED ON THE LARGER OF THE PIPES INSTALLED.
- SHEETING, IF USED, IN ALL CASES SHALL BE LEFT IN PLACE BELOW A LINE 1'-0" ABOVE THE TOP OF THE SEWER PIPE, UNLESS OTHERWISE INDICATED OR DIRECTED BY THE ENGINEER.
- WHEN DIRECTED BY THE ENGINEER, REMOVE UNSUITABLE MATERIAL BELOW TYPICAL TRENCH SUBGRADE AND INCREASE THE DEPTH OF BEDDING WRAPPED IN GEOTEXTILE FABRIC. THIS WORK WILL BE PAID UNDER THE ITEM: AUTHORIZED ADDITIONAL EARTH EXCAVATION AND BEDDING.
- WHERE CONCRETE ENCASEMENT IS CALLED FOR BY THE PLANS, OR WHEN DIRECTED BY THE ENGINEER, REPLACE BEDDING AND BACKFILL BELOW THE "LINE OF NARROW TRENCH LIMIT" WITH CLASS "A" CONCRETE.
- SEWER MARKING TAPE SHALL BE INSTALLED A MINIMUM OF 18" ABOVE THE SANITARY SEWER FORCE MAIN.
- SANITARY SEWER PIPE SHALL HAVE GEOTEXTILE FABRIC AROUND THE PIPE BEDDING AS SHOWN ON THE DETAILS.

SANITARY SEWER PIPE TRENCH NOTES
SCALE: NOT TO SCALE

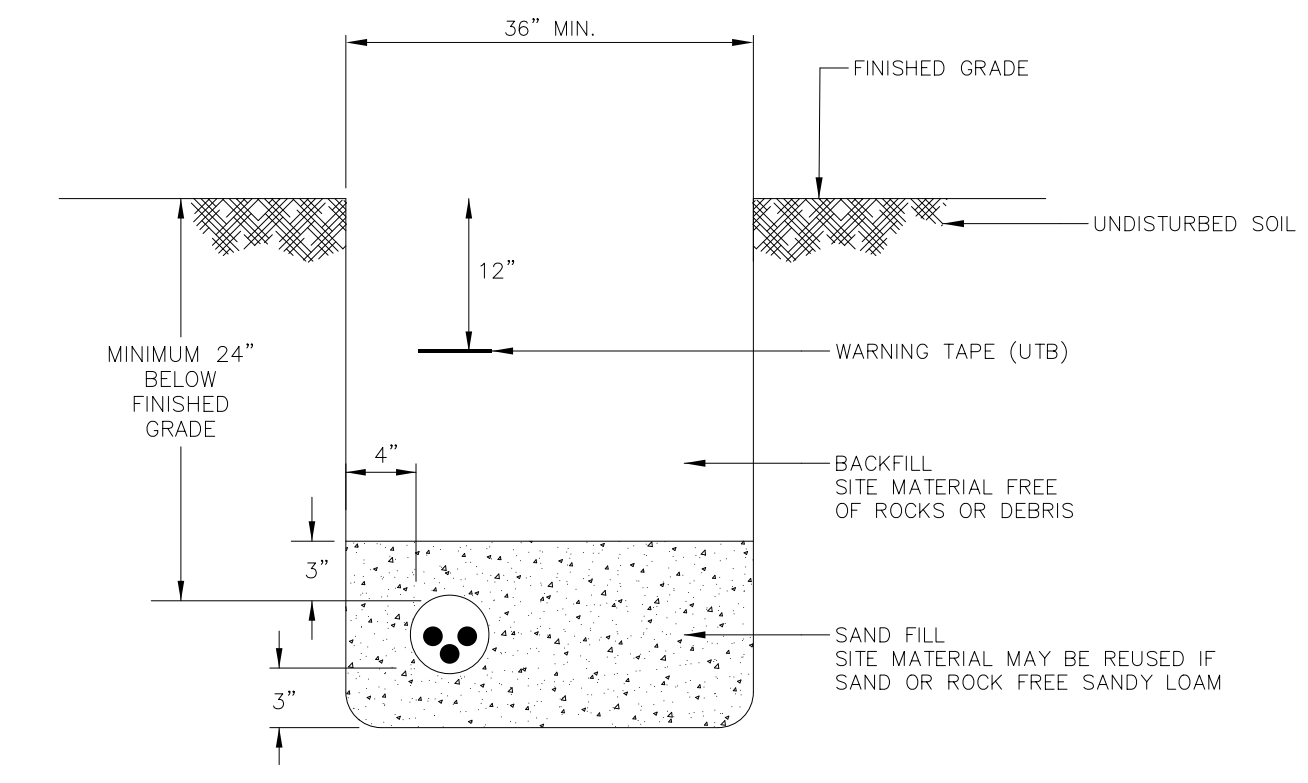
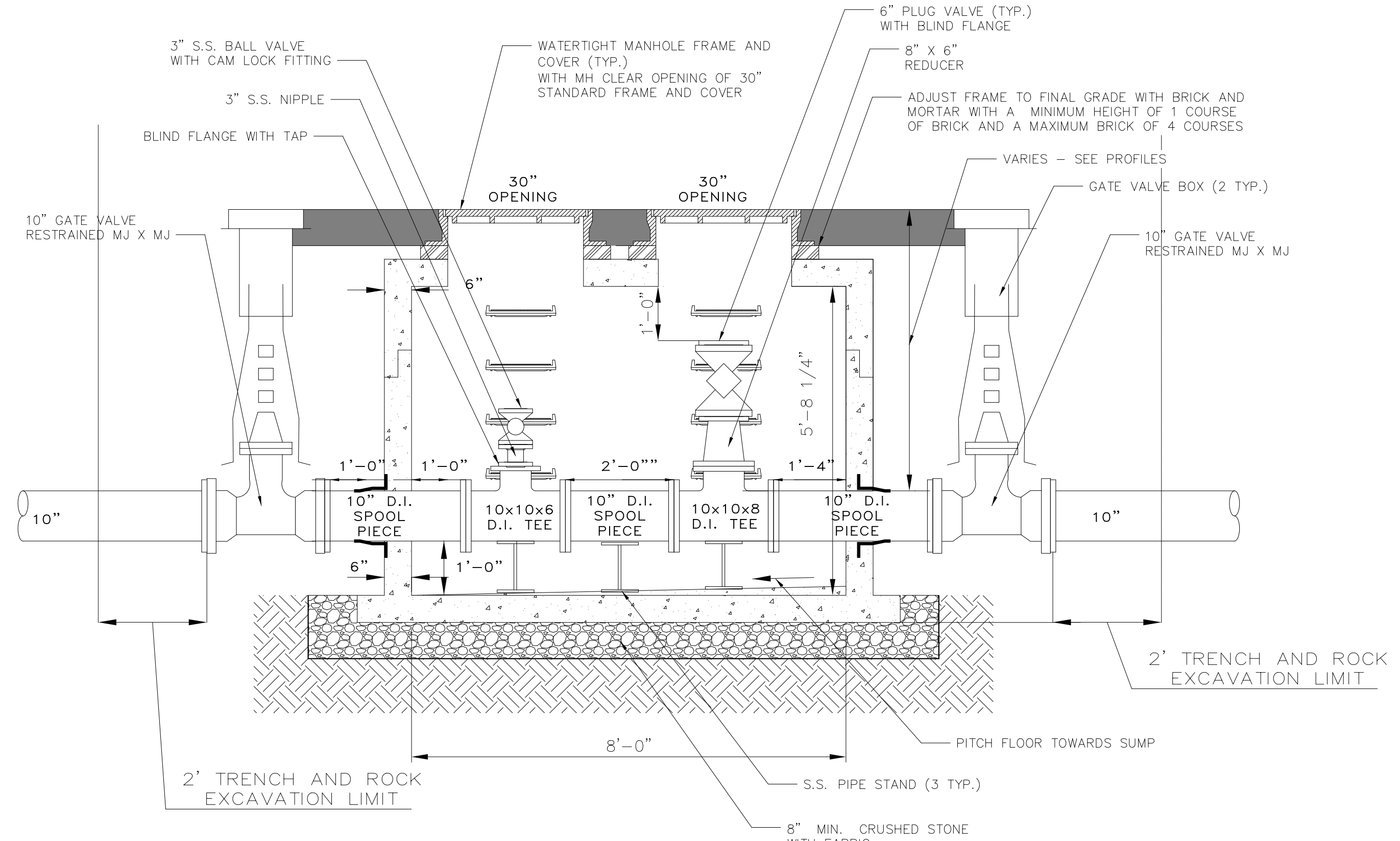
NEW SHEET ADDED BY ADDENDUM NO. 2

REV.	DATE	REVISION DESCRIPTION	SHEET NO.	Plotted Date: JANUARY 2025	DESIGNER/DRAFTER: AJS/JCT	 FUSS & O'NEILL One Financial Plaza, 15th Floor Hartford, CT 06103 860.646.2469 www.fando.com	SIGNATURE/ BLOCK:	PROJECT TITLE: REPLACEMENT OF BRIDGE NO. 02713 & 06896 RTE 156 OVER FOUR MILE RIVER AND ARMSTRONG BROOK	TOWN: OLD LYME EAST LYME	PROJECT NO. 104-175
					CHECKED BY: DLW/MEG		APPROVED BY:		DRAWING TITLE: SAN. SEWER DETAILS - I	DRAWING NO. U-08
					SCALE AS NOTED				SHEET NO. 15.09.A2	



MANHOLE STEP DETAIL
SCALE: NOT TO SCALE

FLEXIBLE SLEEVE
SCALE: NOT TO SCALE



UTILITY TRENCH DETAIL
SCALE: NOT TO SCALE

- NOTE:
1. DIMENSIONS ARE APPROXIMATE AND MAY VARY WITH THE PIPE MATERIAL UTILIZED
 2. ALIGN TEE AND PLUG VALVE WITH CENTER OF MANHOLE COVER.
 3. SEE PLAN SHEETS FOR PIPE MATERIAL INTO AND OUT OF CHAMBER.

CLEANOUT CHAMBER
SCALE: N.T.S.

NEW SHEET ADDED BY ADDENDUM NO. 2

THE INFORMATION, INCLUDING ESTIMATED QUANTITIES OF WORK, SHOWN ON THESE SHEETS IS BASED ON LIMITED INVESTIGATIONS BY THE STATE AND IS IN NO WAY WARRANTED TO INDICATE THE CONDITIONS OF ACTUAL QUANTITIES OF WORK WHICH WILL BE REQUIRED.		DESIGNER/DRAFTER: AJS/JCT CHECKED BY: DLW/MEG SCALE AS NOTED	One Financial Plaza, 15th Floor Hartford, CT 06103 860.646.2469 www.fando.com	SIGNATURE/BLOCK: APPROVED BY:	PROJECT TITLE: REPLACEMENT OF BRIDGE NO. 02713 & 06896 RTE 156 OVER FOUR MILE RIVER AND ARMSTRONG BROOK	TOWN: OLD LYME EAST LYME	PROJECT NO. 104-175 DRAWING NO. U-09 SHEET NO. 15.10.A2	
REV.	DATE	REVISION DESCRIPTION	SHEET NO.	Plotted Date: JANUARY 2025				