



## OFFICE OF THE PURCHASING AGENT

*City of Leominster, Massachusetts*

CITY HALL - 25 WEST STREET  
LEOMINSTER, MASSACHUSETTS 01453  
www.leominster-ma.gov

Gregory C. Chapdelaine  
Purchasing Agent  
gchapdelaine@leominster-ma.gov  
978-962-3538

Meredith Tarr  
Assistant Purchasing Agent  
mtarr@leominster-ma.gov  
978-962-3537

### **Addendum #2 – January 15, 2025**

#### **Invitation for Bids:**

#### **Twin Cities Rail Trail Phase III**

**I.F.B. Due Date: - January 24, 2025, at 11:00 A.M.**

This Addendum does hereby become a part of the IFB document referenced above; it supersedes and/or adds additional requirements to the original specifications. Please be aware of these changes when submitting your IFB submission for the above-mentioned bid.

Below are directives bidders are to follow regarding the bid documents, as well as questions the City has received regarding the above-named bid, with the City's responses provided.

**ITEM 1-1: BID FORM**

**DELETE** Project Bid Form, consisting of 7 pages, and **REPLACE** with Project Bid Form, consisting of 7 pages, attached hereto as Attachment A. Please note the revision of the name of bid unit item 015300.01 from "Silt Sack Dust Control" to "Silt Sack."

**ITEM 1-2: LANDSCAPE DETAIL SHEET L5.0**

**DELETE** Landscape Detail Sheet L5.0, and **REPLACE** with revised Landscape Detail Sheet L5.0, attached hereto as Attachment B.

**ITEM 1-3: The following are questions, which were sent to the City, with their respective answers:**

**Q1A** The granite pavers are shown in Detail 2 – Granite Paving on plan sheet L5.0. The following questions are for these pavers: Note 1 for this detail specifies a 2-1/2" thick minimum paver, however the detail shows a 2" thick paver. Please advise how thick the paver is to be.

**A1A** **Granite Pavers shall be 2" thick, gauged. See attached, revised detail sheet L5.0.**

**Q1B** The plans don't show what dimension paver is to be used OR what pattern is to be installed. Please advise.

**A1B** **Granite Pavers shall be to the size and pattern shown on the layout drawings; see sheet L2.0. CAD files will be provided to Contractor during construction.**

- Q2** Reference Bid Form Item No. 01 53 00.01, the item description on the bid form is "Silt Sack Dust Control". Please clarify if this item's description should be just "Silt Sack". If not, what dust control should be included under this item?
- A2** **The item's description should be "Silt Sack." See attached, revised bid form.**
- Q3** Will the fine grading and compacting of the subgrade areas underneath the cement concrete sidewalks and pedestrian curb ramps be measured and compensated under item # 31 00 00.06?
- A3** **No, the grading and compacting of the subgrade areas underneath the cement concrete sidewalks and pedestrian curb ramps shall be measured and paid for under their respective items 03 33 00.01 Pedestrian Concrete Paving and 03 33 00.02 Cement Concrete Pedestrian Curb Ramp.**
- Q4** Will the furnish & install of Type B gravel underneath the cement concrete sidewalks and pedestrian curb ramps be measured and compensated under item # 31 00 00.04?
- A4** **No, Gravel Borrow Type 'b' installed as a granular base material underneath Pedestrian Concrete Paving and Cement Concrete Pedestrian Curb Ramp shall be measured and paid for under their respective items 03 33 00.01 Pedestrian Concrete Paving and 03 33 00.02 Cement Concrete Pedestrian Curb Ramp.**
- Q5** Within the Site Improvements specification section 1.06, note C, it is stated that all proposed signage details shall be fabricated to match the existing Phase 1 trail signage. Could the manufacturer of the Phase 1 signage please be provided?
- A5** **All signage elements on this project should be custom fabricated to meet the specification requirements and details contained within the contract and to match as closely as possible those as built signs on Phase I. Contractor is responsible for sourcing a fabricator who is confident and experienced in executing the work required.**

**CITY OF LEOMINSTER**

By: Gregory C. Chapdelaine,  
Purchasing Agent

**Addendum #2 - Attachment A**  
**January 15, 2025**

**BID FORM**  
**LEOMINSTER, MASSACHUSETTS**  
**TWIN CITIES RAIL TRAIL AT LEOMINSTER DEPOT**

ITEM NO.	Approx. Quantity	Item with Unit Bid Price Written in Words	Unit Price		Amount	
			Dollars	Cents	Dollars	Cents
01 53 00.01	5	Silt Sack, at Per EACH				
01 53 00.02	4	Bound Removed and Reset, at Per Each				
01 53 00.03	1	Mobilization, at Per Lump Sum				
01 53 00.04	1	NPDES Stormwater Pollution Prevention Plan at Per Lump Sum				
01 53 00.05	330	Sediment Control Barrier, at Per Foot				
01 53 00.06	1	Allowance for Temporary Fencing, at Per Allowance	\$ 20,000.00	.00	\$ 20,000.00	.00
01 53 00.07	1	Allowance for Police Detail, at Per Allowance	\$ 5,000.00	.00	\$ 5,000.00	.00
01 56 39.01	950	Tree Protection Fencing, at Per Foot				
01 56 39.02	2	Pruning of Existing Trees to Remain, at Per Each				
03 30 00.01	620	Pedestrian Concrete Paving, at Per Square Yard				
03 30 00.02	50	Cement Concrete Pedestrian Curb Ramp, at Per Square Yard				
31 00 00.01	1,300	Unclassified Excavation, at Per Cubic Yard				
31 00 00.02	50	Test Pit for Exploration, at Per Cubic Yard				
31 00 00.03	500	Ordinary Borrow, at Per Cubic Yard				
31 00 00.04	800	Gravel Borrow, at Per Cubic Yard				

31 00 00.05	2	Crushed Stone, at Per Ton				
31 00 00.06	3,000	Fine Grading and Compaction - Subgrade Area, at Per Square Yard				
31 00 00.07	1	Environmental Health and Safety Program, at Per Lump Sum				
31 00 00.08	40	Personal Protection Level C Upgrade, at Per Hour				
31 00 00.09	40	Licensed Site Professional Services, at Per Hour				
31 00 00.10	1,270	Disposal of Unregulated Soil, at Per Ton				
31 00 00.11	80	Disposal of Regulated Soil - In-State Facility, at Per Ton				
31 00 00.12	80	Disposal of Regulated Soil - Out-of- State Facility, at Per Ton				
31 00 00.13	80	Disposal of Hazardous Waste, at Per Ton				
31 00 00.14	10	Geotextile Fabric for Separation, at Per Square Yard				
31 00 00.15	100	Track Excavation, at Per Foot				
31 00 00.16	10	Disposal of Treated Wood Products, at Per Ton				
32 05 05.01	0.5	Clearing and Grubbing, at Per Acre				
32 05 05.02	0.3	Selective Clearing and Thinning, at Per Acre				
32 05 05.03	20	Sawcutting Asphalt Pavement, at Per Foot				

32 05 05.04	60	Sawcutting Portland Cement Concrete, at  Per Foot				
32 10 00.01	13,460	Calcium Chloride for Roadway Dust Control, at  Per Pound				
32 10 00.02	10	Water for Roadway Dust Control, at  Per 1,000 Gallons				
32 10 00.03	210	Superpave Surface Course - 9.5 (SSC - 9.5), at  Per Ton				
32 10 00.04	340	Superpave Intermediate Course - 19.0 (SIC - 19.0), at  Per Ton				
32 10 00.05	20	HMA for Patching, at  Per Ton				
32 10 00.06	200	Asphalt Emulsion for Tack Coat, at  Per Gallon				
32 1000.07	120	HMA Joint Adhesive, at  Per Foot				
32 10 00.08	20	Temporary Asphalt Patching, at  Per Ton				
32 10 00.09	4	Hotmix Asphalt Sidewalk or Driveway, at  Per Ton				
32 10 00.10	230	Imprint System - Median, at  Per Square Foot				
32 10 00.11	24	Brick Walk Removed and Relaid, at  Per Square Yard				
32 12 10.01	40	Control of Invasive Plants Existing on Site, at  Per Hour				
32 12 20.01	8	Invasive Plant Management Strategy, at  Per Hour				
32 16 00.01	150	Granite Curb Type VB - Straight, at  Per Foot				

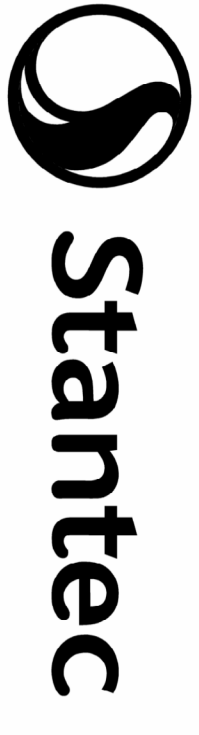
32 16 00.02	170	Granite Curb Type VB - Curved, at Per Foot				
32 16 00.03	36	Granite Transition Curb for Pedestrian Curb Ramps - Straight, at Per Foot				
32 16 00.04	20	Granite Transition Curb for Pedestrian Curb Ramps - Curved, at Per Foot				
32 16 00.05	180	Curb Removed and Reset, at Per Foot				
32 16 00.06	260	Curb Removed and Discarded, at Per Foot				
32 17 00.01	90	Warning-Regulatory and Route Marker - Aluminum Panel (Type A), at Per Square Foot				
32 17 00.02	20	Sign Sup (N/Guide)+RTE MKR W/1 Brkway Post Assembly - Steel, at Per Each				
32 17 00.03	510	Safety Signing for Traffic Management, at Per Square Foot				
32 17 00.04	110	Temporary Pedestrian Barricade, at Per Foot				
32 17 00.05	10	Temporary Pedestrian Curb Ramp, at Per Each				
32 17 00.06	4	Portable Breakaway Barricade Type III, at Per Each				
32 17 00.07	100	Pavement Marking Removal, at Per Square Foot				
32 17 00.08	50	Arrow Board, at Per Day				
32 17 00.09	1,900	Reflectorized Drum, at Per Day				

32 17 00.1	20	12 Inch ReflectORIZED White Line (Painted), at  Per Foot				
32 17 00.11	390	4 Inch ReflectORIZED Yellow Line (Painted), at  Per Foot				
32 17 00.12	40	Pavement Legend ReflectORIZED White (Painted), at  Per Square Foot				
32 17 00.13	40	Pavement Arrows and Legends ReflectORIZED White (Thermoplastic), at  Per Square Foot				
32 17 00.14	30	Pavement Arrows and Legends ReflectORIZED Blue (Thermoplastic), at  Per Square Foot				
32 17 00.15	560	6 Inch ReflectORIZED White Line (Thermoplastic), at  Per Foot				
32 17 00.16	630	12 Inch ReflectORIZED White Line (Thermoplastic), at  Per Foot				
32 17 00.17	1	Miscellaneous Sign Removed and Reset, at  Per Each				
32 30 00.01	81	Granite Seat Walls, at  Per Foot				
32 30 00.02	3	Granite Marker, at  Per Each				
32 30 00.03	498	Granite Paving, at  Per Square Foot				
32 30 00.04	2	Interpretive Sign, at  Per Each				
32 30 00.05	1	Trailhead Sign, at  Per Each				
32 33 00.06	260	Split Rail Fence, at  Per Foot				
32 33 00.07	400	Wood Guardrail, at  Per Foot				

32 33 00.01	2	Trash Receptacle, at Per Each				
32 33 00.02	2	Curved Park Bench, at Per Each				
32 33 00.03	4	Curved Park Bench on Wall, at Per Each				
32 33 00.04	2	Picnic Table with Seats, at Per Each				
32 33 00.05	1	Accessible Picnic Table with Seats, at Per Each				
32 33 00.06	5	Bicycle Rack, at Per Each				
32 90 00.01	560	Planting Soil, at Per Cubic Yard				
32 90 00.02	3,623	Seeded Lawn, at Per Square Yard				
32 90 00.03	5	Amelanchier canadensis 6'-8' Height, at Per Each				
32 90 00.04	3	Crataegus viridis 'Winter King' 2.5'-3' Cal. , at Per Each				
32 90 00.05	3	Juniperus virginiana 5'-6' Height, at Per Each				
32 90 00.06	3	Liquidambar styraciflua 'Rotundiloba' 3.5"-4" Cal., at Per Each				
32 90 00.07	1	Nyssa sylvatica 3.5"-4" Cal., at Per Each				
32 90 00.08	32	Cornus sericea 7 Gal., at Per Each				
32 90 00.09	18	Ilex glabra 'Shamrock' 7 Gal., at Per Each				
32 90 00.10	8	Viburnum trilobum 7 Gal., at Per Each				



32 90 00.11	85	Hemerocallis 'Joan Senior' 1 Gal., at Per Each				
32 90 00.12	130	Hemerocallis 'Rosy Returns' 1 Gal., at Per Each				
32 90 00.13	90	Symphoricaricium novae-angliae 1 Gal., at Per Each				
32 90 00.14	71	Rudbeckia fulgida 'Goldsturm' 1 Gal., at Per Each				
33 40 00.01	1	Drainage Structure Remodeled, at Per Each				
<b>TOTAL BID PRICE:</b>						
<i>TOTAL BID PRICE (DOLLARS)</i>			<i>TOTAL BID PRICE (CENTS)</i>			



45 BLUE SKY DRIVE | BURLINGTON, MA 01803

**TWIN CITIES  
RAIL TRAIL**  
WATER STREET TO  
MAIN STREET  
LEOMINSTER, MA

KEY PLAN:

ISSUE:

NO.	REVISION	DATE
1	ADDENDUM #2	1/15/25
2	ATTACHMENT B, REVISED	
3	GRANITE PAVING DETAIL	

STAMPED AND SIGNED:

DRAWING TITLE:

**LANDSCAPE DETAILS  
PART 1 OF 5**

DESIGNED:JP

DRAWN: JP/CS CHECKED:AR

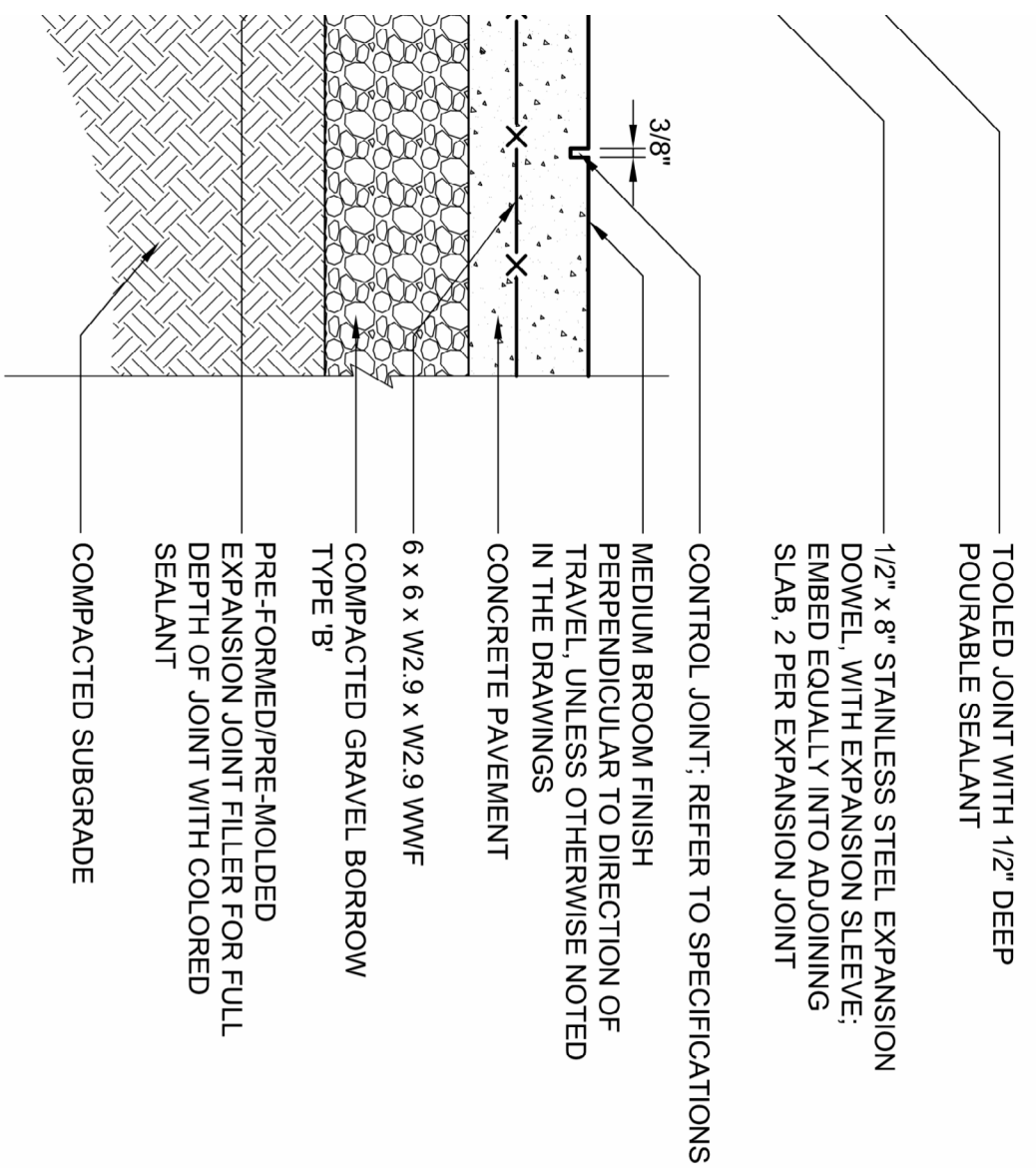
DATE: 12.11.2024

SCALE:

SUBMISSION:BD SET

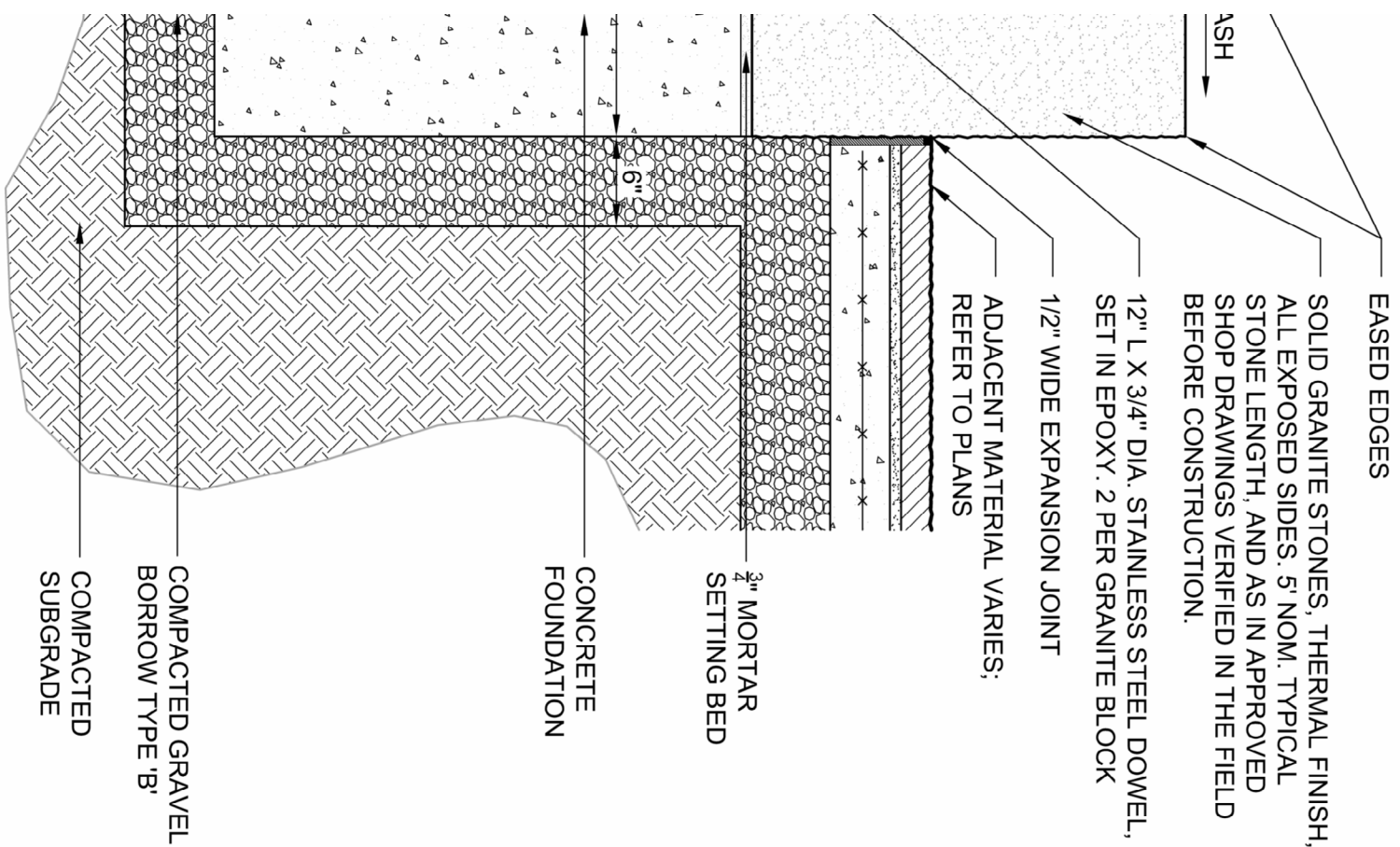
DRAWING NO.

**L5.0**



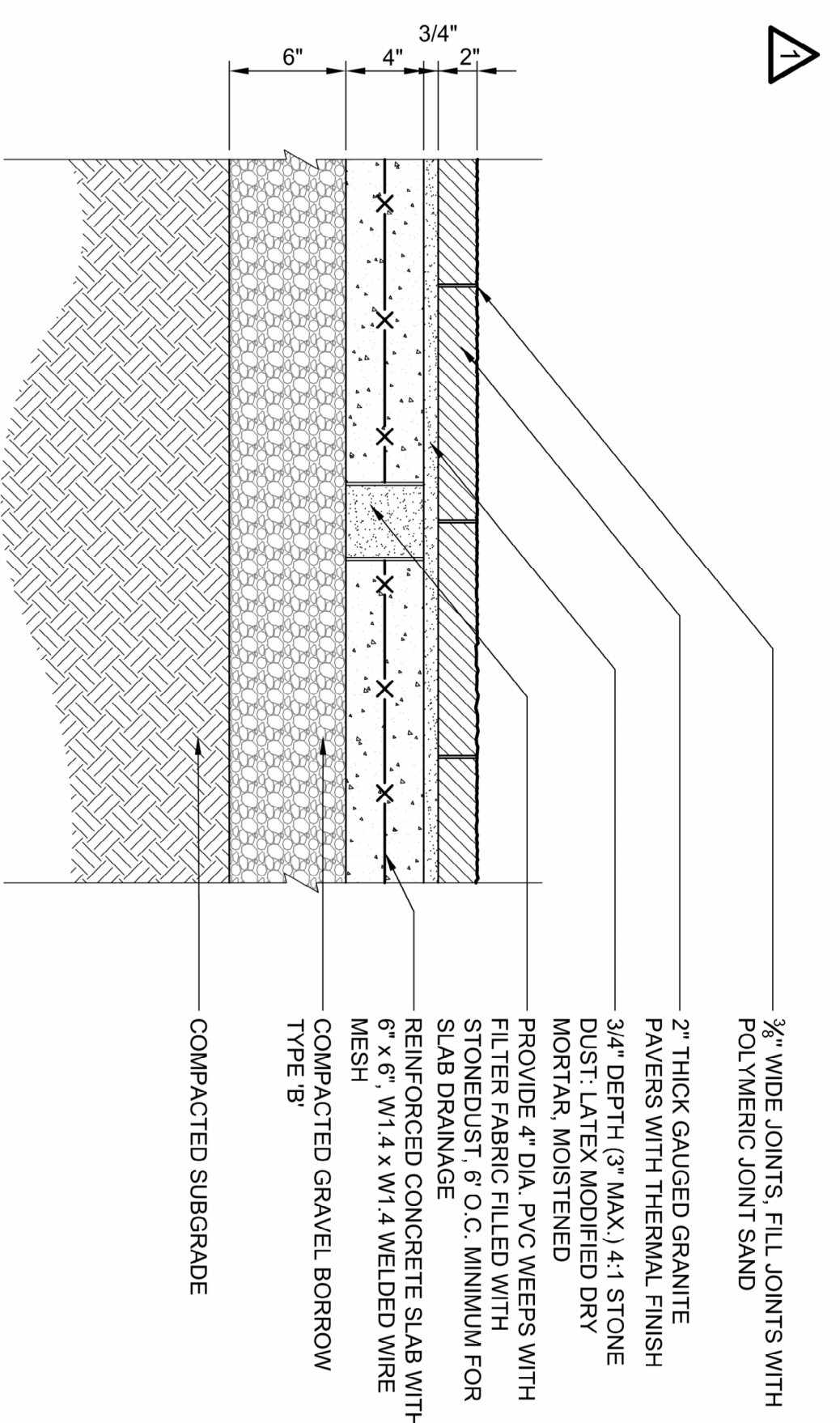
CONSTRUCTION JOINT REQUIREMENTS: 3/8" O.C. MINIMUM.  
VERTICAL STRUCTURE INTERFACES. USE 3/8" EXPANSION JOINTS AT ALL  
VERTICAL INTERFACES.  
APPROVED IN SHOP DRAWING.  
REFER TO ADDITIONAL REQUIREMENTS.

**ETE PAVING**



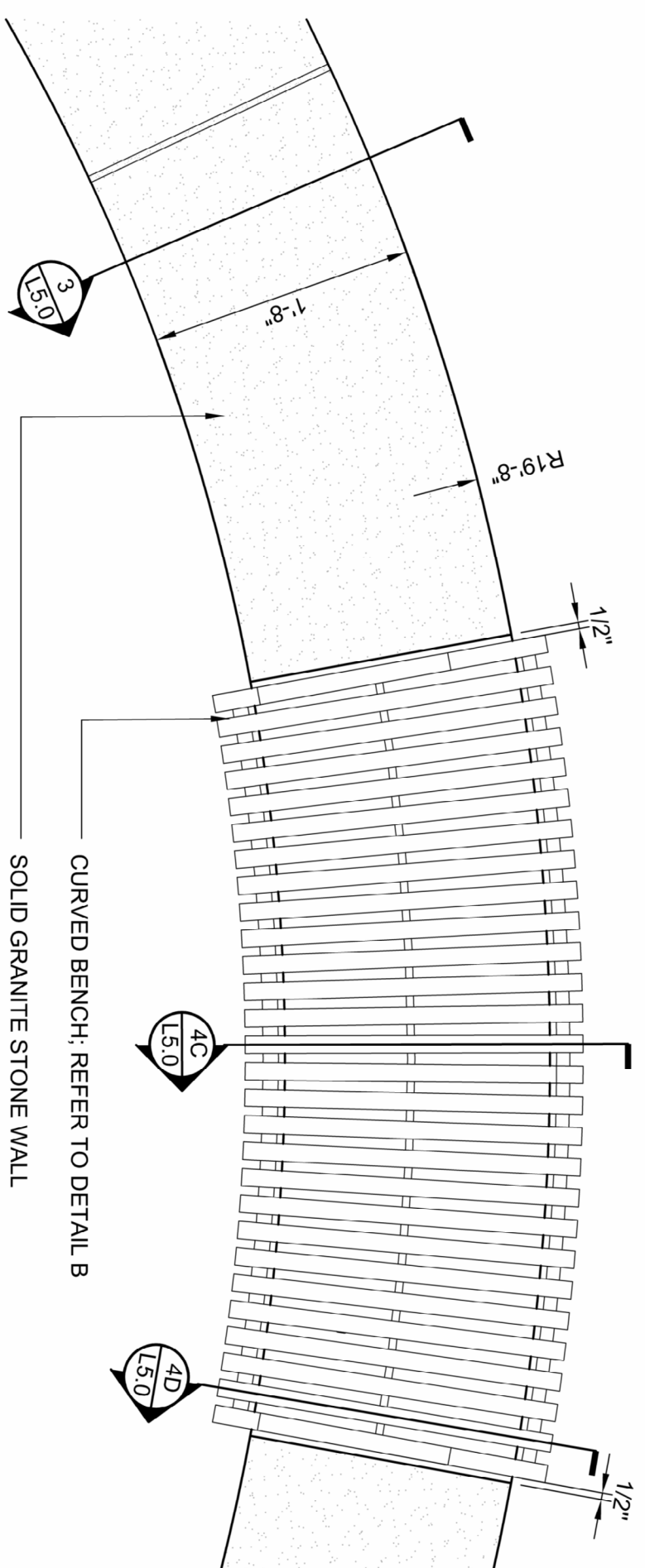
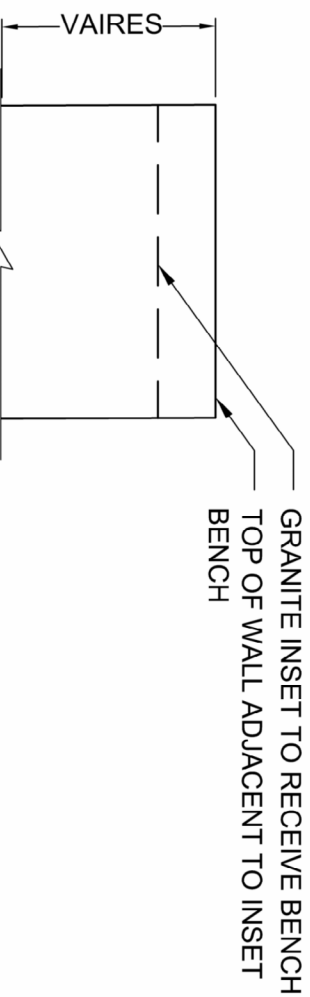
**2 GRANITE PAVING**

SCALE: 1'-1/2"=1'-0"

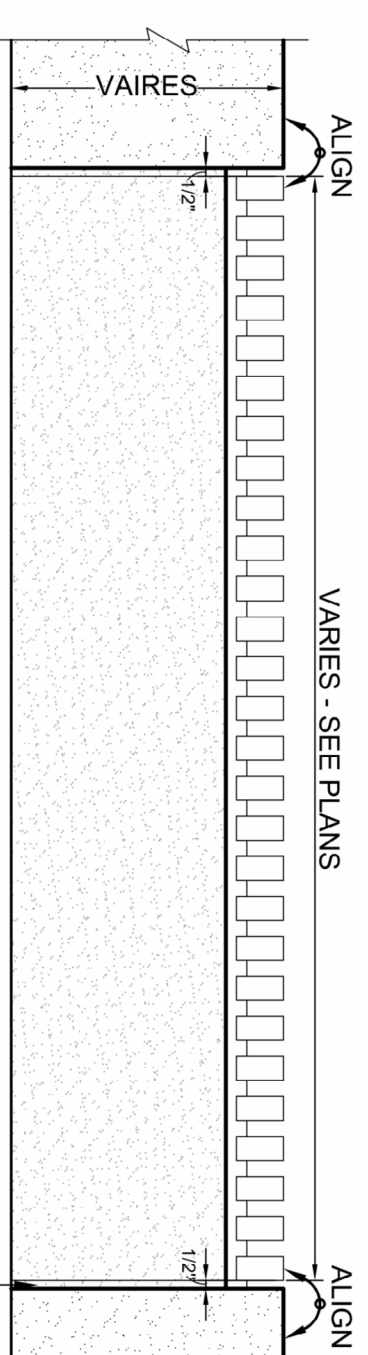


NOTES:  
1. ALL PAVERS ARE 2" THICK, MIN. REFER TO SPECIFICATIONS FOR ADDITIONAL REQUIREMENTS.  
2. ALL EXPOSED EDGES OF GRANITE SHALL BE THERMAL FINISH.  
3. JOINT SAND COLOR TO BE SELECTED FROM SAMPLES.  
4. INSTALL 3/4" EXPANSION JOINT AT ALL VERTICAL STRUCTURE INTERFACE.  
5. INSTALL 3/8" EXPANSION JOINT AT ALL PAVING JOINTS, 3/8" O.C. MIN.

**D. SECTION**



**A. PLAN**

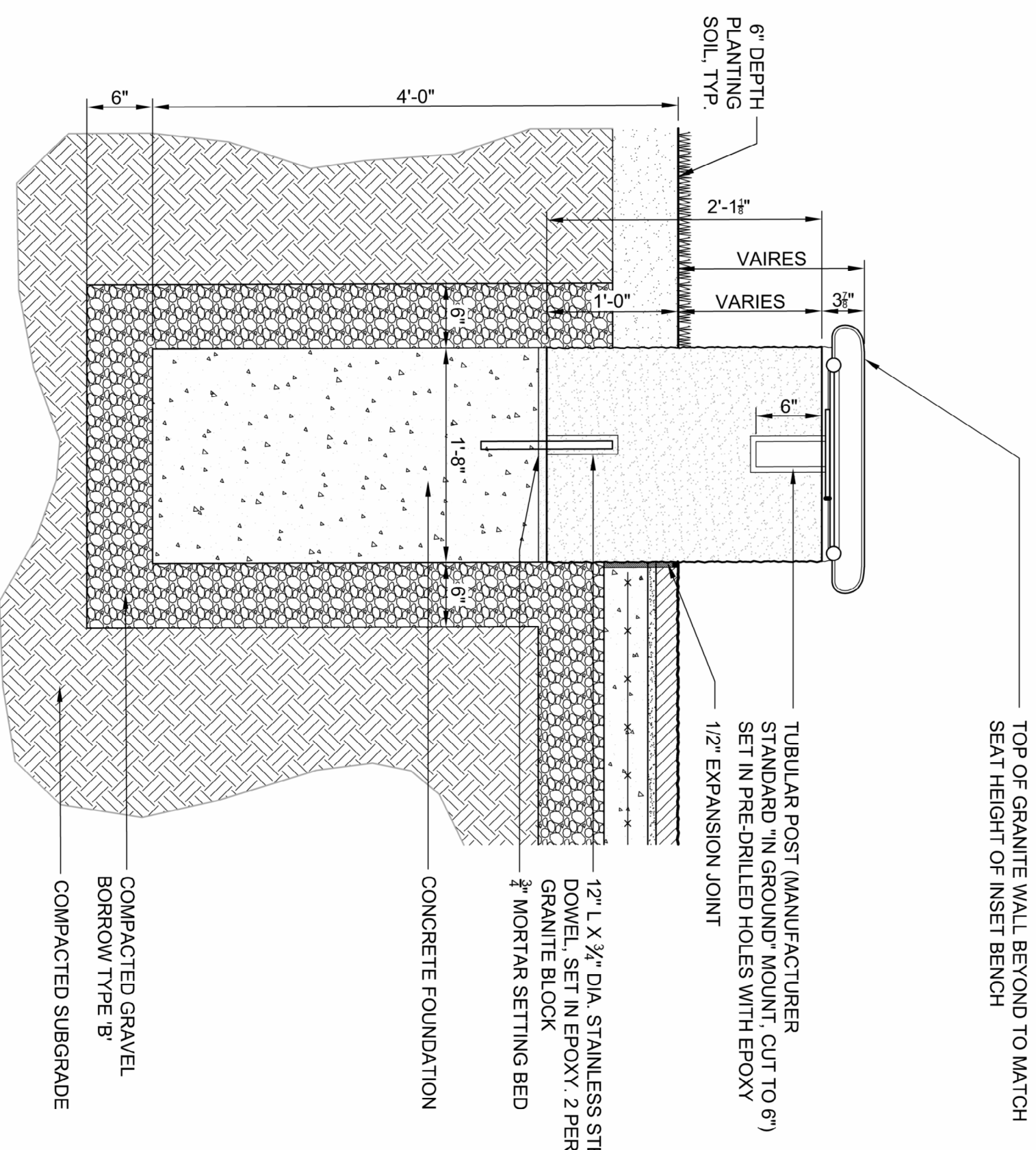


**B. FRONT ELEVATION**

NOTES:  
1. CONTRACTOR TO VERIFY DEPTH OF WALL.  
2. INSET IN ORDER TO RECEIVE BENCH. SHOP DRAWING REVIEW PROCESS.  
3. ADD NOTES FROM GRADING PLAN SHEET.

**4 GRANITE SEAT WALL WITH BENCH**

SCALE: 1"=1'-0"



**C. SECTION**