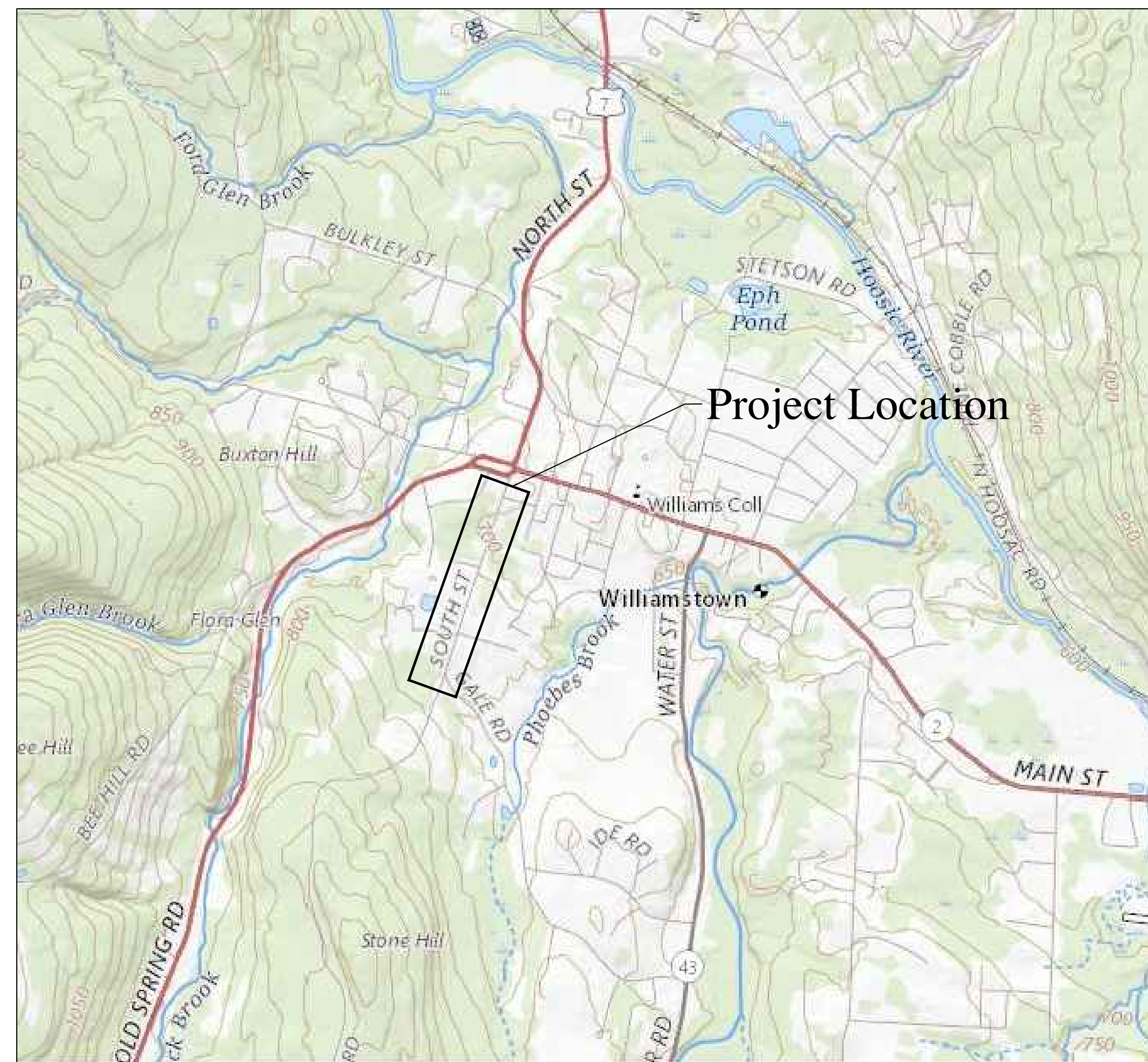


South Street Reconstruction

Williamstown, Massachusetts



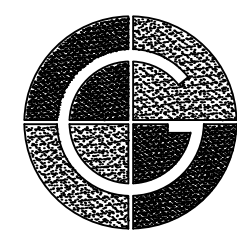
Prepared for:

Town of Williamstown
31 North Street
Williamstown, Massachusetts

Date:

January 8, 2025

Prepared By:

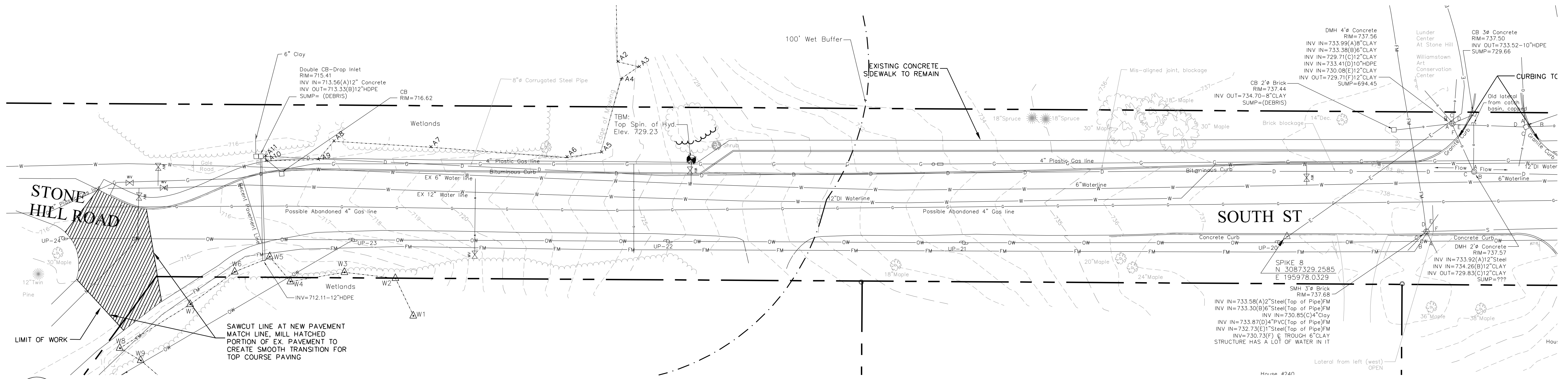


GUNTLOW & ASSOCIATES, INC.
ENGINEERS • SURVEYORS ARCHITECTS

55 NORTH STREET
WILLIAMSTOWN, MA. 01267
413-458-2198
413-458-2712 FAX

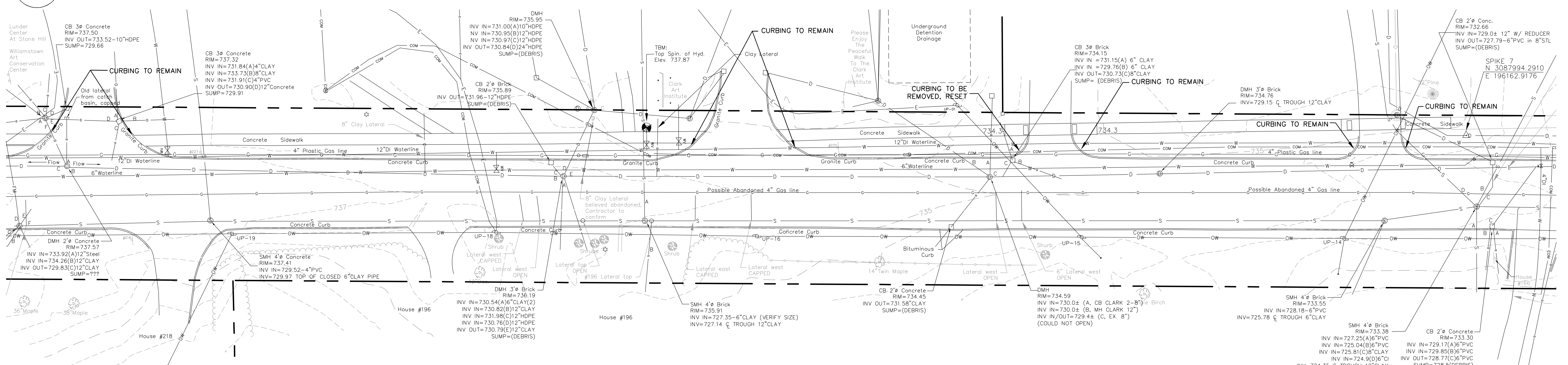
Sheet Index

	Cover
C1-C3	Existing Condition/Demolition Plans
C4-C6	Layout Plans
C7-C11	Drainage Plans/Profiles
C12-C16	Sewer Plans/Profiles
C17-C21	Grading Plans/Profiles
C22-C25	Site Details



1 Existing Conditions and Demolition Plan

C1 Scale: 1"=20'



2 Existing Conditions and Demolition Plan

C1 Scale: 1"=20'

Legend

☆	LIGHT POLE	---	PROPERTY LINE
+	SIGN	---	ONE-FOOT CONTOUR
⊕	UTILITY POLE	---	FIVE-FOOT CONTOUR
⊗	GAS VALVE	---	TREE LINE
⊗	WATER VALVE	---	APPROX. WATER LINE
⊗	FIRE HYDRANT	---	APPROX. GAS LINE
⊗	DRAIN MANHOLE	---	APPROX. DRAIN LINE
⊗	CATCH BASIN	---	APPROX. SANITARY LINE
⊗	SANITARY MANHOLE	---	OVERHEAD WIRES
---		---	EROSION CONTROL BARRIER

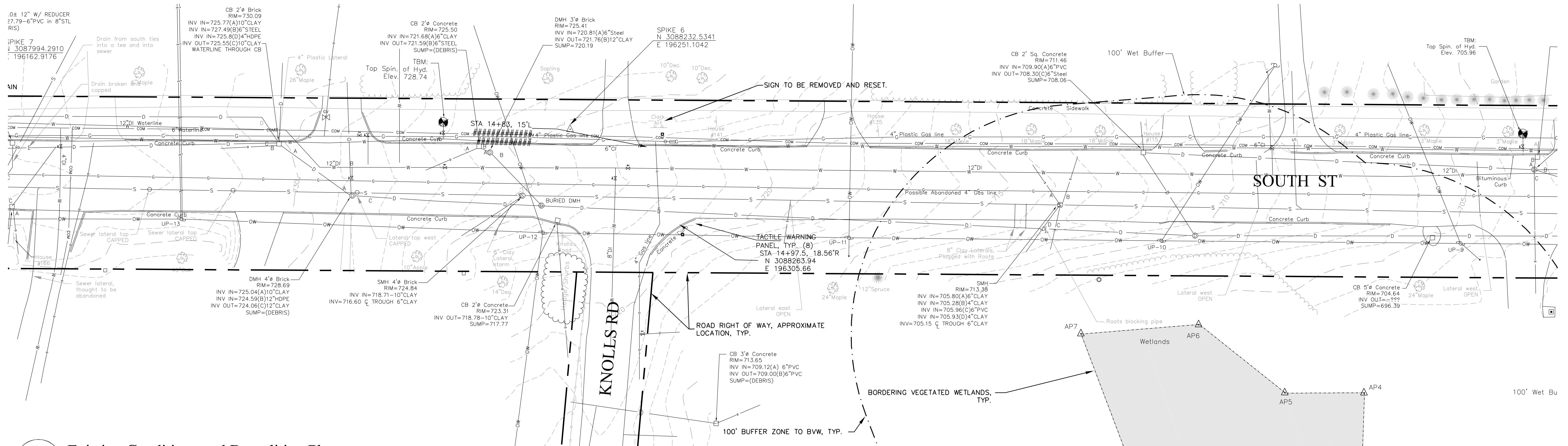
Demolition Notes

- Existing drainage and sewer lines to be replaced shall be removed when encountered within the limit of trenching.
- Existing drainage and sewer lines to be abandoned and outside of proposed trench limits shall be first verified by the Town of Williamstown that the remaining lines are inactive. After verification the lines may be end-plugged with concrete and abandoned in place.
- All existing sanitary and drainage structures within the limit of work shall be removed and disposed of properly off site.
- Existing pavement shall remain in place until trenching operations require its removal, or until reconstruction/roadway/repaving work is about to begin.
- All pavement and curbing within limit of work is intended to be replaced unless otherwise noted.

General Notes

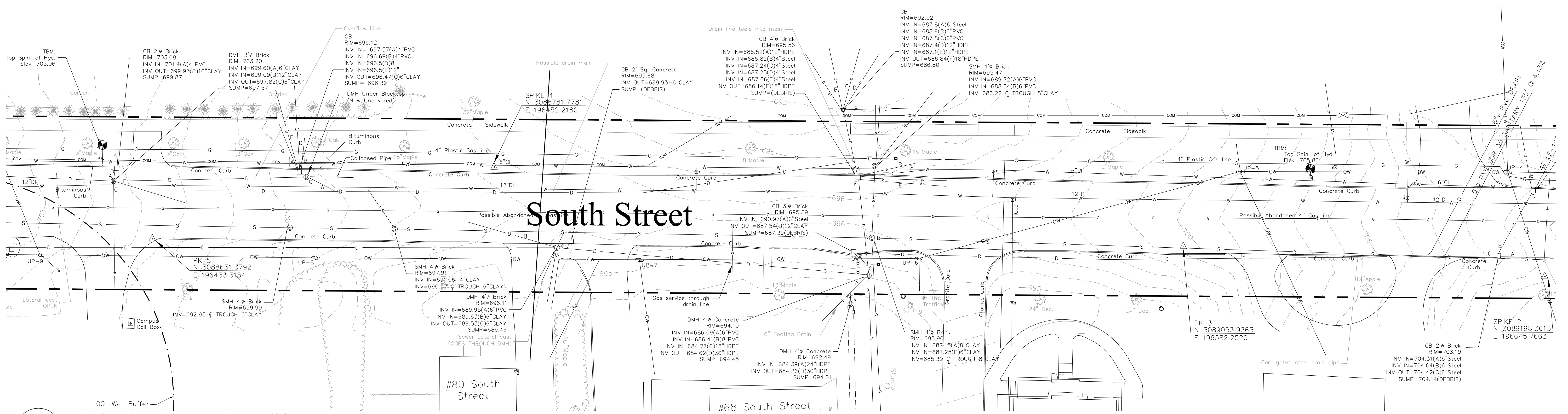
- Existing conditions and topography taken from field survey by Guntlow & Associates, Inc., Williamstown, MA. Horizontal Datum is Mass State Plane NAD 83, Vertical Datum is NGVD 1988, per gps survey performed in spring of 2018. Contractor shall localize to on-site control to insure being on the same datum both vertically and horizontally.
- Locations of underground utilities are shown in an approximate way, based only on available record data. Additional utilities may exist. Prior to construction, contractor shall call "Dig Safe" at 811 and have all utilities marked on the ground. The contractor shall be responsible for determining the exact location of all existing utilities before commencing work. The contractor agrees to be fully responsible for any and all damages which might be occasioned by his/her failure to exactly locate and preserve any and all utilities.
- The Contractor shall be responsible for a thorough site examination to determine the extent of demolition necessary to prepare the site for construction and shall verify all items to be demolished or salvaged with the Contractor prior to beginning work.
- Care shall be taken not to damage any items designated to remain; repair or replacement of damaged items designated to remain shall be at the Contractors' expense.
- The Contractor shall protect existing trees to remain with wood board trunk protection and snow fencing.
- The General Contractor is responsible for preparing, filing and administering the EPA National Pollution Discharge Elimination System (NPDES) Notice of Intent (NOI) to the EPA and Stormwater Pollution Prevention Plan (SWPPP), prior to the start of any disturbances on site by any Contractor.
- The Contractor may request to the Town, for their approval, to close the road for very limited periods. The request shall be made at least two days in advance of the scheduled work. Police may be required for traffic control as determined by the situation by the Town and Police. The Contractor shall otherwise maintain at least one lane of traffic open at all times.
- The Contractor shall provide for temporary traffic signs (3) to assist in the redirection of potential Clark Art visitor traffic around the primary work area. This is most important during July and August of 2025, but might be desired for a longer period of time.
- The Contractor shall maintain a pedestrian sidewalk along the west side of the project area throughout construction. Temporary relocation of the sidewalk may be required.
- The Contractor shall temporarily bituminous pave for two way traffic during the winter months for plowing and emergency vehicle use purposes.
- The Contractor shall request a hydrant meter from Williamstown DPW for water use required as part of the construction project, fee exempt.

Existing Conditions DRAWN BY: AIC DATE: 01.08.2025 CHECKED BY: CUL DRAWING NO.: 11820 JOB NO.: 0010320 SCALE: 1"=20'		REVISIONS # DESCRIPTION DATE WHOM			GUNTLOW & ASSOCIATES, INC. ENGINEERS • SURVEYORS • ARCHITECTS 55 NORTH STREET WILLIAMSTOWN, MA 01267 413-458-2198 413-458-2712 FAX	South Street Reconstruction PREPARED FOR Town of Williamstown South Street, Williamstown, MA 01267	C1 SHEET 1 OF 25
--	--	--------------------------------------	--	--	--	---	----------------------------



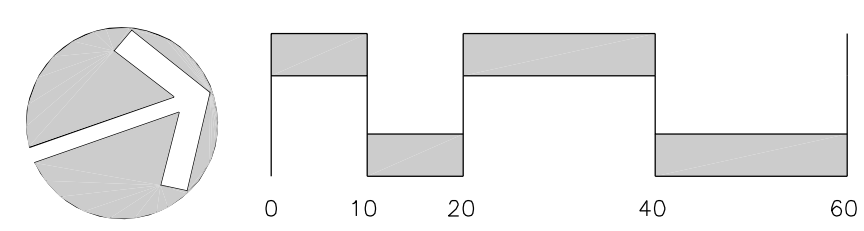
1 Existing Conditions and Demolition Plan

C2 Scale: 1"=20'

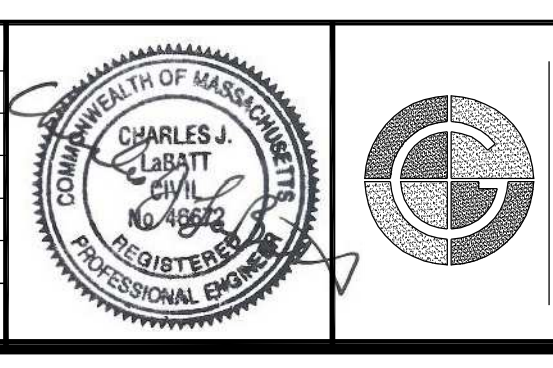


2 Existing Conditions and Demolition Plan

C2 Scale: 1"=20'

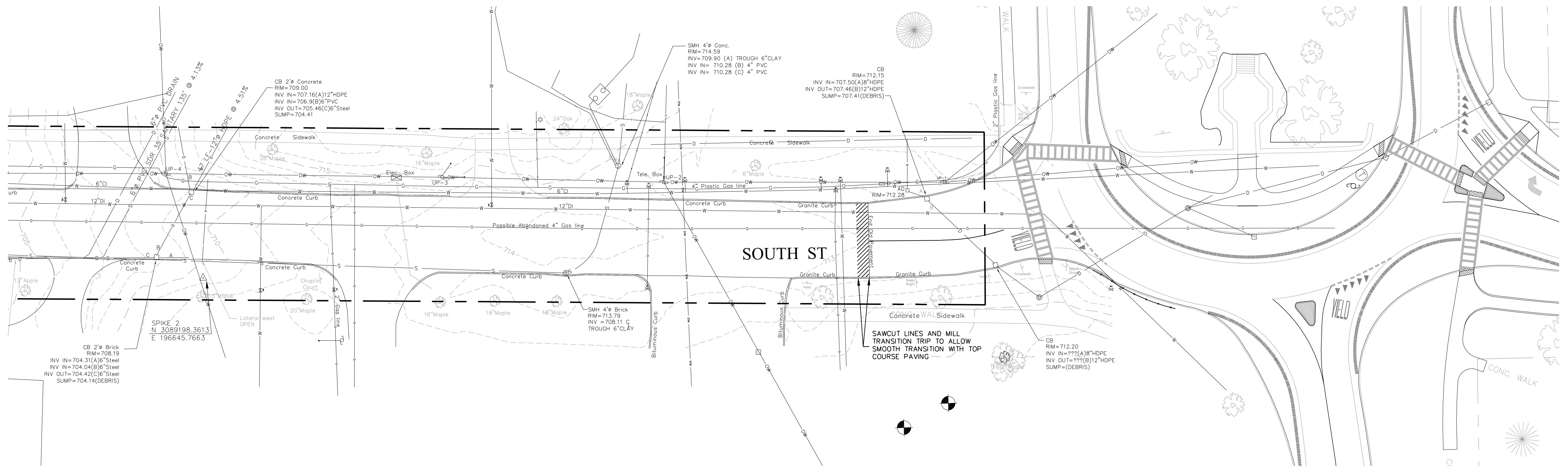


Existing Conditions		REVISIONS	
DRAWN BY: AIC	DATE: 01.08.2025	#	DESCRIPTION
CHECKED BY: CUL	DRAWING NO.: 11920		
JOB NO.: 0010320	SCALE: 1"=20'		



GUNTLOW & ASSOCIATES, INC.
ENGINEERS - SURVEYORS - ARCHITECTS
55 NORTH STREET
WILLIAMSTOWN, MA. 01267
413-458-2198
413-458-2712 FAX

South Street Reconstruction
PREPARED FOR
Town of Williamstown
South Street, Williamstown, MA 01267



1 Existing Conditions and Demolition Plan
C3 Scale: 1"=20'

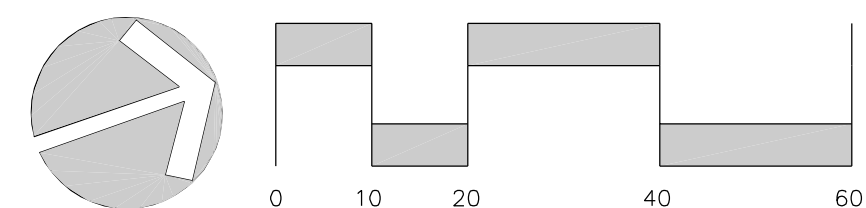
CONTROL POINTS: (NAD 83)	
SPIKE 2 N: 3089198.3613 E: 196645.7663	
PK 3 N: 3089053.9363 E: 196582.2520	
SPIKE 4 N: 3088781.7781 E: 196452.2180	
PK 5 N: 3088631.0792 E: 196433.3154	
SPIKE 6 N: 3088232.5341 E: 196251.1042	
SPIKE 7 N: 3087994.2910 E: 196162.9176	
SPIKE 8 N: 3087329.2585 E: 195978.0329	

Construction Scheduling and Sequencing

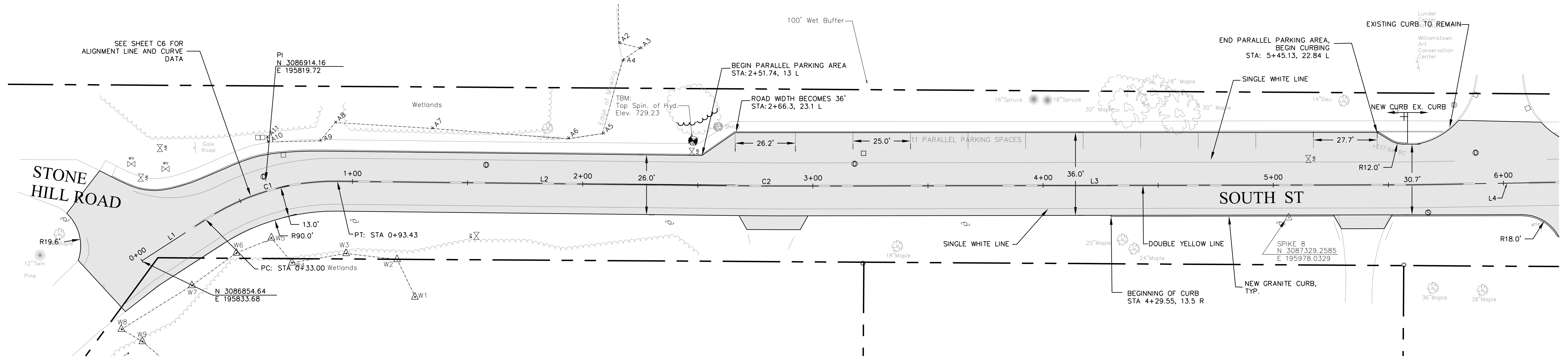
The contractor shall meet with the Town of Williamstown to discuss and establish a construction schedule that ensures suitable access to residents and The Clark Art Institute at all times. The Contractor shall prepare a proposed work schedule for the entire duration of the project for this discussion.

It is suggested that utility work in the northbound lane be done first, leaving better access in the southbound lane to the Clark Art during the summer season.

The road will need to be open to local traffic at all times unless otherwise approved and scheduled with the Town of Williamstown and Williamstown Fire Department for temporary partial closures.

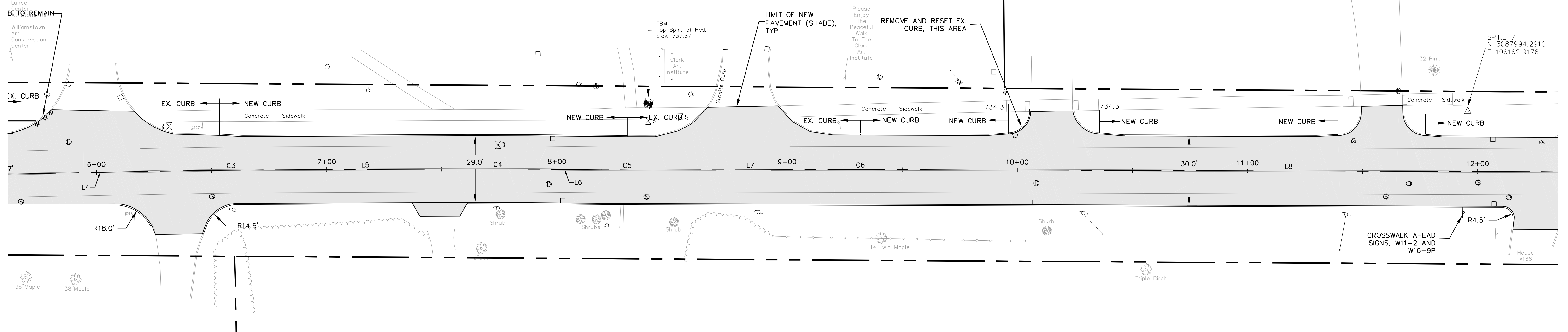


Existing Conditions		REVISIONS					GUNTLOW & ASSOCIATES, INC. ENGINEERS • SURVEYORS • ARCHITECTS 55 NORTH STREET WILLIAMSTOWN, MA, 01267 413-458-2100 413-458-2712 FAX	South Street Reconstruction PREPARED FOR Town of Williamstown South Street, Williamstown, MA 01267	C3
DRAWN BY: AIC	DATE: 01.08.2025	#	DESCRIPTION	DATE					



1 Site Improvements Plan

C4 Scale: 1"=20'

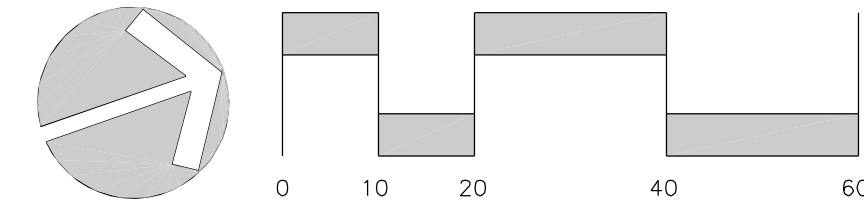


2 Site Improvements Plan

C4 Scale: 1"=20'

Legend

- ⊙ LIGHT POLE
- ⊕ SIGN
- ⊙ UTILITY POLE
- ⊕ GAS VALVE
- ⊕ WATER VALVE
- ⊕ FIRE HYDRANT
- ⊕ DRAIN MANHOLE
- ⊕ CATCH BASIN
- ⊕ SANITARY MANHOLE
- PROPERTY LINE
- ONE-FOOT CONTOUR
- FIVE-FOOT CONTOUR
- TREE LINE
- W APPROX. WATER LINE
- G APPROX. GAS LINE
- D APPROX. DRAIN LINE
- S APPROX. SANITARY LINE
- OW OVERHEAD WIRES
- EROSION CONTROL BARRIER



Layout Notes

1. Construction parking, laydown and staging areas for the Project shall be coordinated with the Town of Williamstown.
2. The Contractor shall verify all layout, dimensions, grades, and inverts prior to construction; report any and all discrepancies to the Engineer. All discrepancies shall be resolved in writing prior to beginning work.
3. All areas disturbed from construction activity to be raked, smoothed, fertilized and seeded unless otherwise noted.
4. All new surfaces to meet existing surfaces with smooth, continuous line and grade.
5. The Contractor shall not install concrete during adverse weather conditions (rain, sleet, etc.) unless otherwise directed by the Engineer.
6. Control and layout is based on NAD 83, NAVD 88, but the Contractor shall localize to onsite control to insure conformance with the plans.

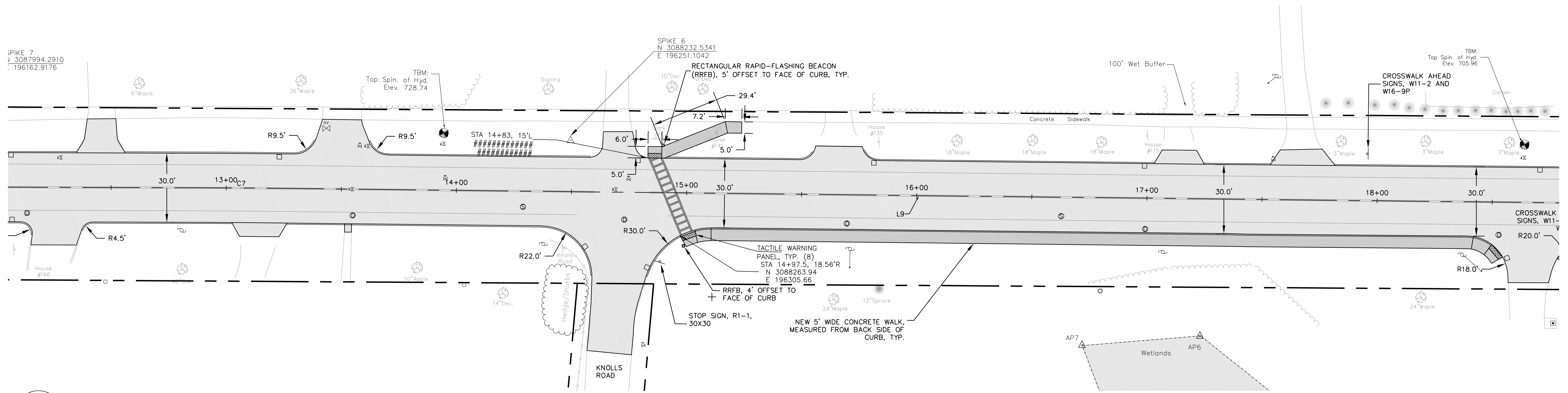
Layout Plans		REVISIONS			
DRAWN BY: AIC/JW	DATE: 01.08.2025	#	DESCRIPTION	DATE	WHOM
CHECKED BY: CJL	DRAWING NO.: 12120				
JOB NO.: 0010320	SCALE: 1"=20'				

South Street Reconstruction

PREPARED FOR
Town of Williamstown
South Street, Williamstown, MA 01267

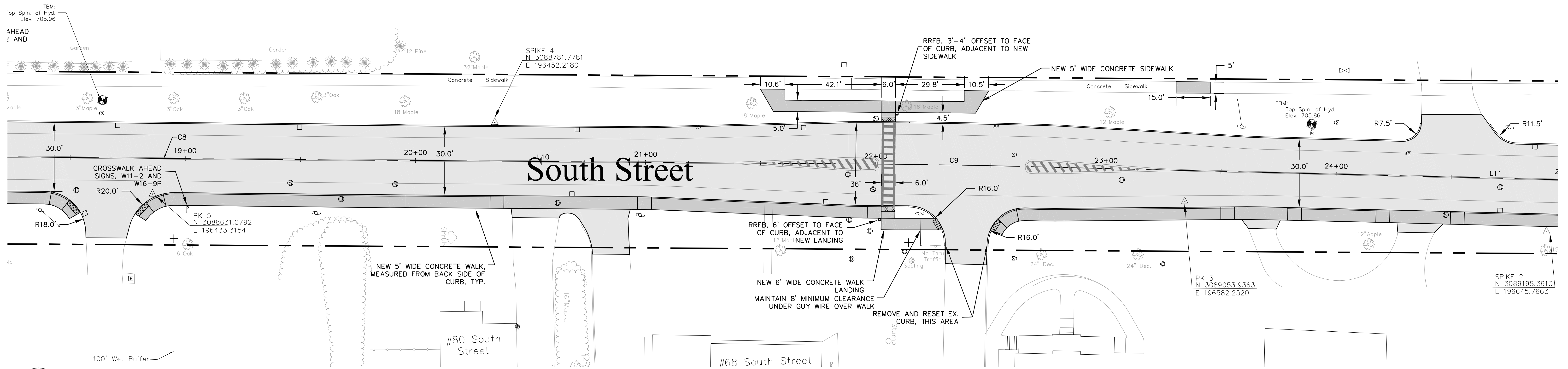
C4

SPIKE 7
N 3087994.2910
E 196162.9176



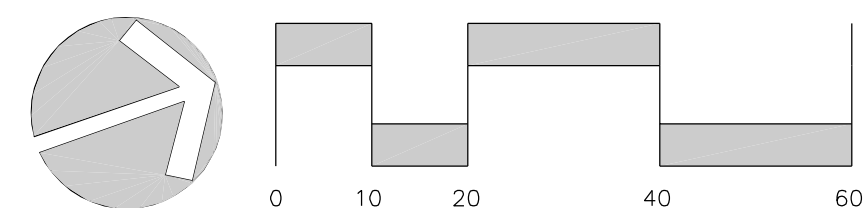
1 Site Improvements Plan

C5 Scale: 1"=20'

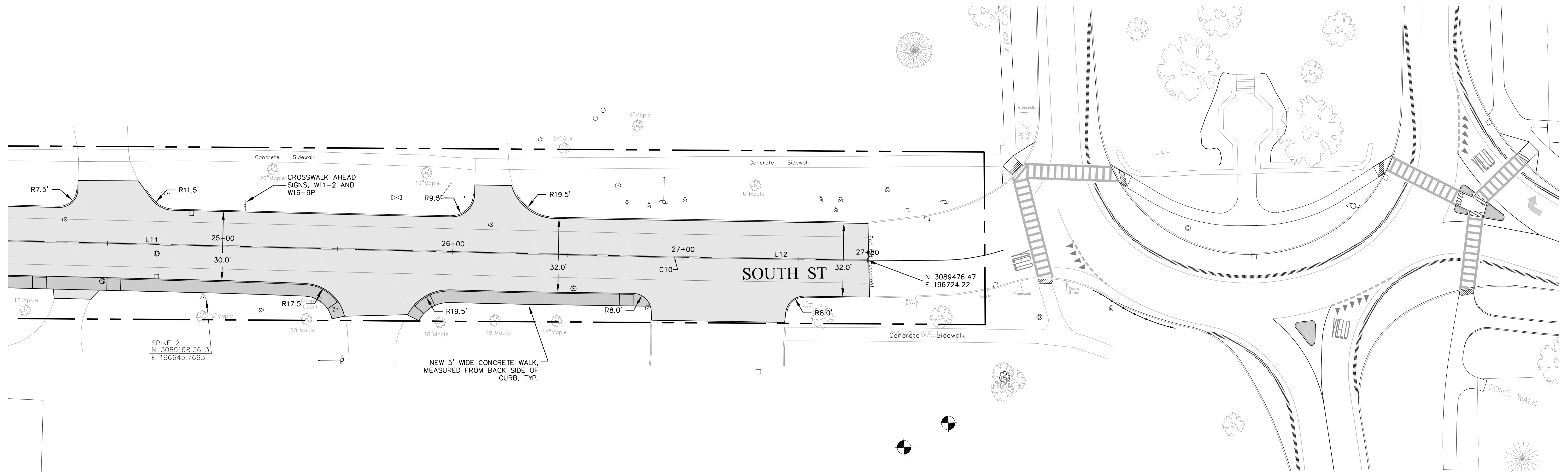


2 Site Improvements Plan

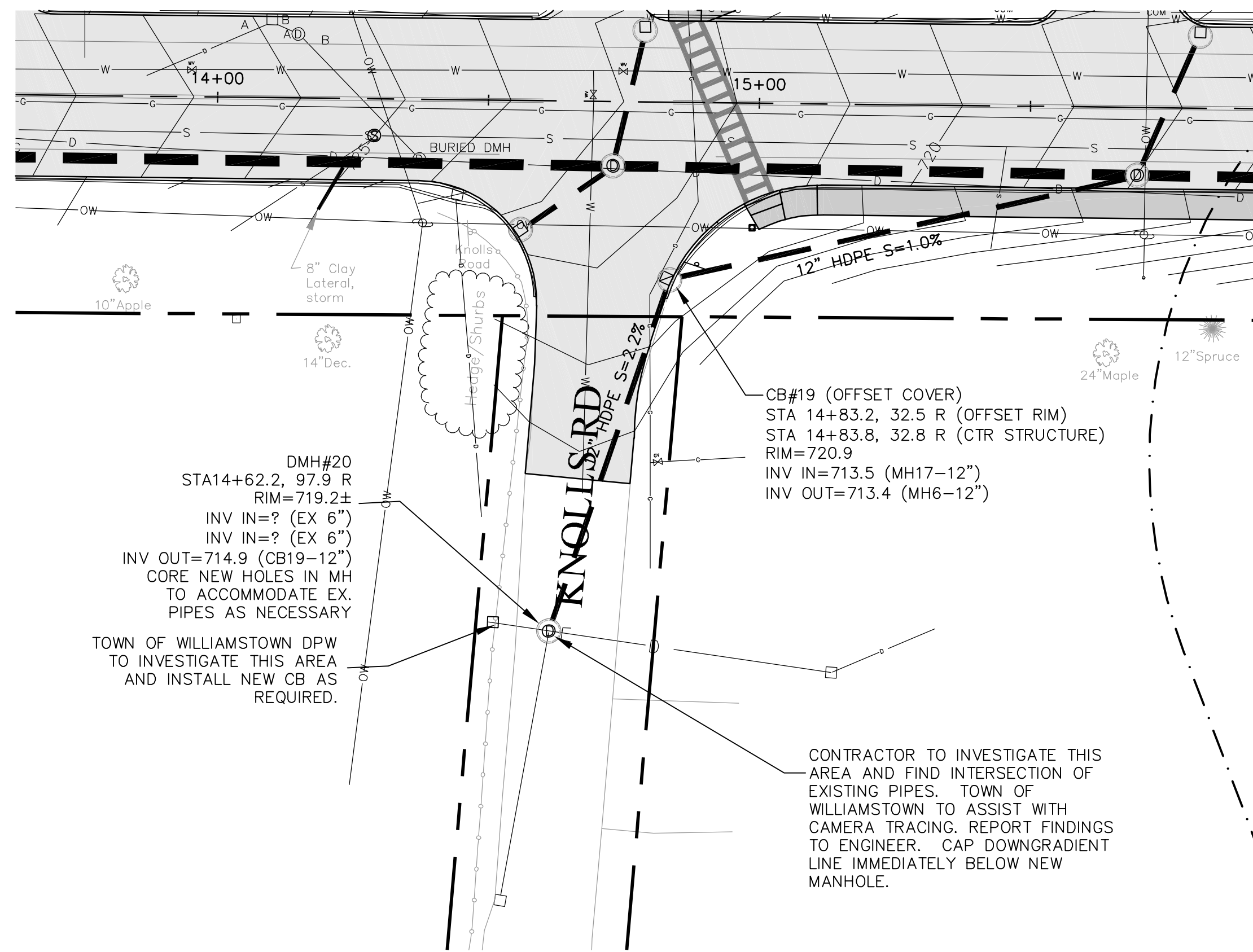
C5 Scale: 1"=20'



Layout Plans		REVISIONS					GUNTLOW & ASSOCIATES, INC. ENGINEERS • SURVEYORS • ARCHITECTS 55 NORTH STREET WILLIAMSTOWN, MA, 01267 413-458-2198 413-458-2712 FAX	South Street Reconstruction PREPARED FOR Town of Williamstown South Street, Williamstown, MA 01267	
DRAWN BY:	DATE:	#	DESCRIPTION	DATE					
AIC/JW	01.08.2025								
CJL	12.22.20								
0010320	1"=20'								



1 Site Improvements Plan
C6 Scale: 1"=20'



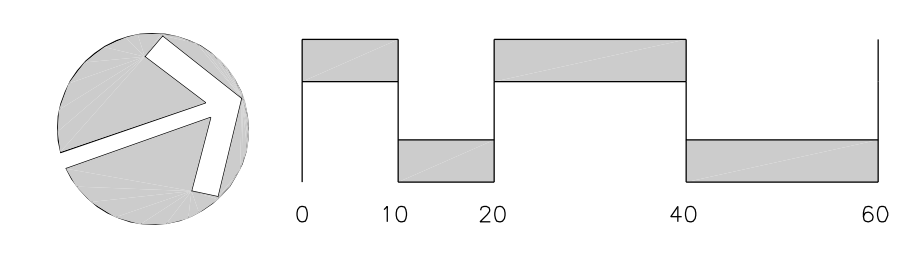
2 Knolls Road Drainage
C6 Scale: 1"=20'

Line Table: Alignments

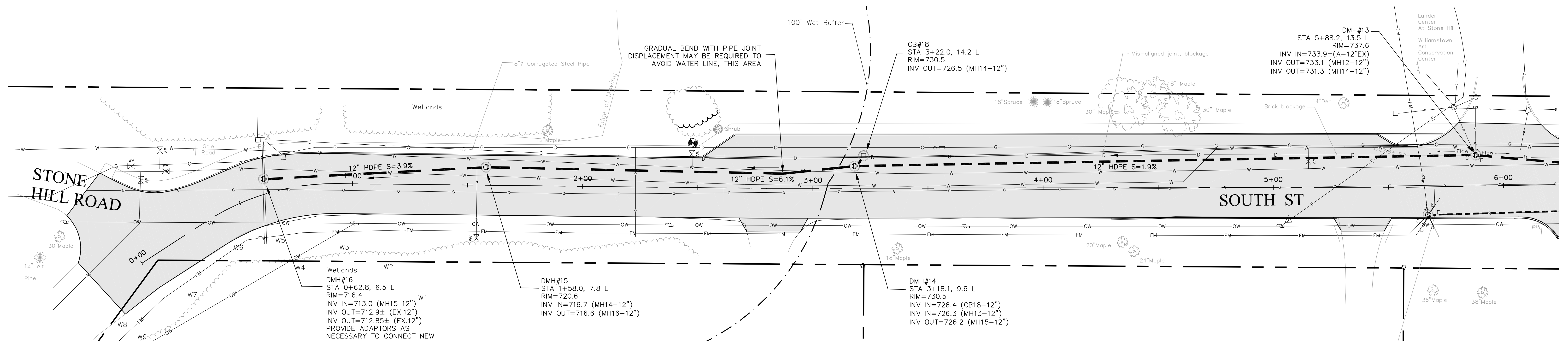
Line #	Length	Direction	Start Point	End Point
L1	33.00	N13° 59' 42.32"W	(3086852.08,195833.68)	(3086884.10,195825.70)
L2	179.89	N19° 37' 27.92"E	(3086943.60,195828.63)	(3087113.05,195889.05)
L3	272.14	N18° 52' 53.81"E	(3087125.28,195893.32)	(3087382.78,195981.39)
L4	86.17	N17° 58' 03.31"E	(3087382.78,195981.39)	(3087464.76,196007.97)
L5	89.05	N18° 45' 17.18"E	(3087491.03,196016.69)	(3087575.35,196045.32)
L6	31.87	N19° 29' 53.55"E	(3087600.05,196053.89)	(3087630.09,196064.53)
L7	84.65	N18° 51' 41.65"E	(3087651.24,196071.88)	(3087731.35,196099.25)
L8	361.18	N19° 10' 13.19"E	(3087741.61,196102.79)	(3088082.76,196221.39)
L9	572.69	N19° 37' 52.35"E	(3088098.05,196226.77)	(3088637.45,196419.18)
L10	322.84	N19° 26' 16.12"E	(3088643.86,196421.45)	(3088948.30,196528.89)
L11	436.46	N20° 24' 02.22"E	(3088980.13,196540.42)	(3089389.22,196692.57)
L12	74.81	N19° 53' 20.07"E	(3089406.11,196698.76)	(3089476.47,196724.22)

Curve Table: Alignments

Curve #	Radius	Length	Chord Direction	Start Point	End Point	PC Sta	PT Sta	Delta
C1	103.00	60.44	N2° 48' 52.80"E	(3086884.0977,195825.70)	(3086943.5999,195828.63)	0+33.00	0+93.43	33°37'10"
C2	1000.00	12.96	N19° 15' 10.87"E	(3087113.0452,195889.05)	(3087125.2845,195893.32)	2+73.33	2+86.29	0°44'34"
C3	2015.00	27.68	N18° 21' 40.25"E	(3087464.7559,196007.97)	(3087491.0303,196016.69)	6+44.61	6+72.29	0°47'14"
C4	2015.00	26.15	N19° 07' 35.37"E	(3087575.3509,196045.32)	(3087600.0528,196053.89)	7+61.34	7+87.49	0°44'36"
C5	2015.00	22.39	N19° 10' 47.60"E	(3087630.0927,196064.53)	(3087651.2394,196071.88)	8+19.36	8+41.74	0°38'12"
C6	2015.00	10.86	N19° 00' 57.42"E	(3087731.3461,196099.25)	(3087741.6121,196102.79)	9+26.40	9+37.26	0°18'32"
C7	2015.00	16.21	N19° 24' 02.77"E	(3088082.7607,196221.39)	(3088098.0487,196226.77)	12+98.43	13+14.64	0°27'39"
C8	2015.00	6.80	N19° 32' 04.24"E	(3088637.4481,196419.18)	(3088643.8581,196421.45)	18+87.33	18+94.13	0°11'36"
C9	2015.00	33.86	N19° 55' 09.17"E	(3088948.2971,196528.89)	(3088980.1313,196540.42)	22+16.97	22+50.83	0°57'46"
C10	2015.00	18.00	N20° 08' 41.14"E	(3089389.2187,196692.57)	(3089406.1137,196698.76)	26+87.29	27+05.29	0°30'42"

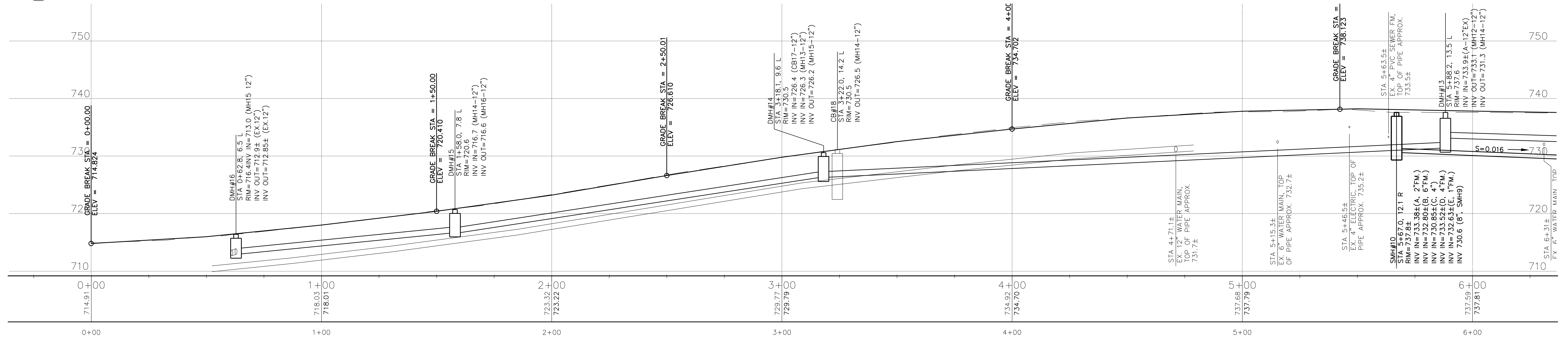


<p>Layout Plan</p> <p>DRAWN BY: AIC/JW DATE: 01.08.2025</p> <p>CHECKED BY: CJL DRAWING NO.: 12320</p> <p>JOB NO.: 0010320 SCALE: 1"=20'</p>		<p>REVISIONS</p> <table border="1"> <thead> <tr> <th>#</th> <th>DESCRIPTION</th> <th>DATE</th> <th>WHOM</th> </tr> </thead> <tbody> <tr> <td> </td> <td> </td> <td> </td> <td> </td> </tr> </tbody> </table>	#	DESCRIPTION	DATE	WHOM						<p>GUNTLOW & ASSOCIATES, INC. ENGINEERS • SURVEYORS • ARCHITECTS</p> <p>55 NORTH STREET WILLIAMSTOWN, MA 01267 413-458-2108 413-458-2712 FAX</p>	<p>South Street Reconstruction</p> <p>PREPARED FOR Town of Williamstown South Street, Williamstown, MA 01267</p>	<p>C6</p> <p>SHEET 6 OF 25</p>
#	DESCRIPTION	DATE	WHOM											



1 Drainage Plan

C7 Scale: 1"=20'

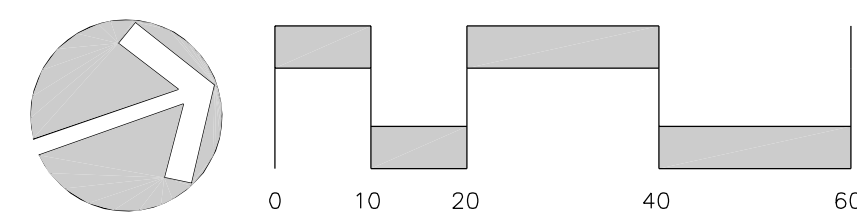


2 Profile Plan

C7 Scale: 1"=20'

Legend

- ☆ LIGHT POLE
- ⊕ SIGN
- ⊕ UTILITY POLE
- ⊕ GAS VALVE
- ⊕ WATER VALVE
- ⊕ FIRE HYDRANT
- ⊕ DRAIN MANHOLE
- ⊕ CATCH BASIN
- ⊕ SANITARY MANHOLE
- PROPERTY LINE
- ONE-FOOT CONTOUR
- FIVE-FOOT CONTOUR
- TREE LINE
- APPROX. WATER LINE
- APPROX. GAS LINE
- APPROX. DRAIN LINE
- APPROX. SANITARY LINE
- OVERHEAD WIRES
- EROSION CONTROL BARRIER

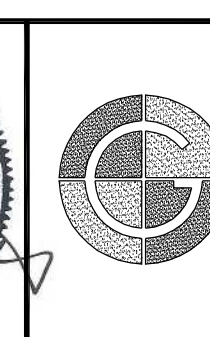
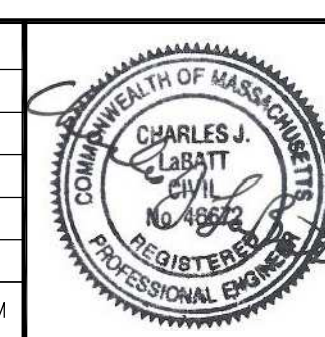


Drainage Notes

- Structure layout, stationing, and offset is to center of structure, unless otherwise noted. Offset frames are noted separately to center of grate.
- Catch basin rims shall be set a minimum of 12" above top of concrete to allow for curbing or inlet stone to be installed without modification.
- Periodically, 500' intervals or as directed by engineer, pipe backfill immediately upgradient of main trunk line manholes shall utilize clay dam in order to restrict groundwater conveyances along trunk lines. Immediately upgradient of the dam, a perforated underdrain pipe shall be installed to collect and discharge groundwater into the adjacent downgradient manhole.
- Contractor to coordinate with Town for scoping of encountered drain lines as to whether they are active or not. Connect to system unless proved inactive.

Drawn Plans	
DRAWN BY: AIC/JW	DATE: 01.08.2025
CHECKED BY: CJL	DRAWING NO.: 12420
JOB NO.: 0010320	SCALE: 1"=20'

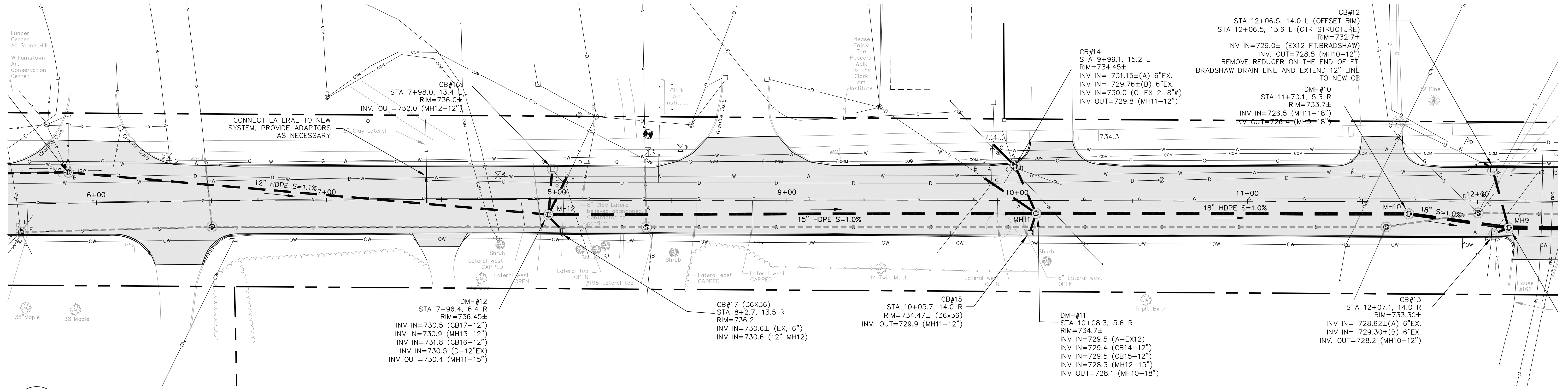
REVISIONS		
#	DESCRIPTION	DATE



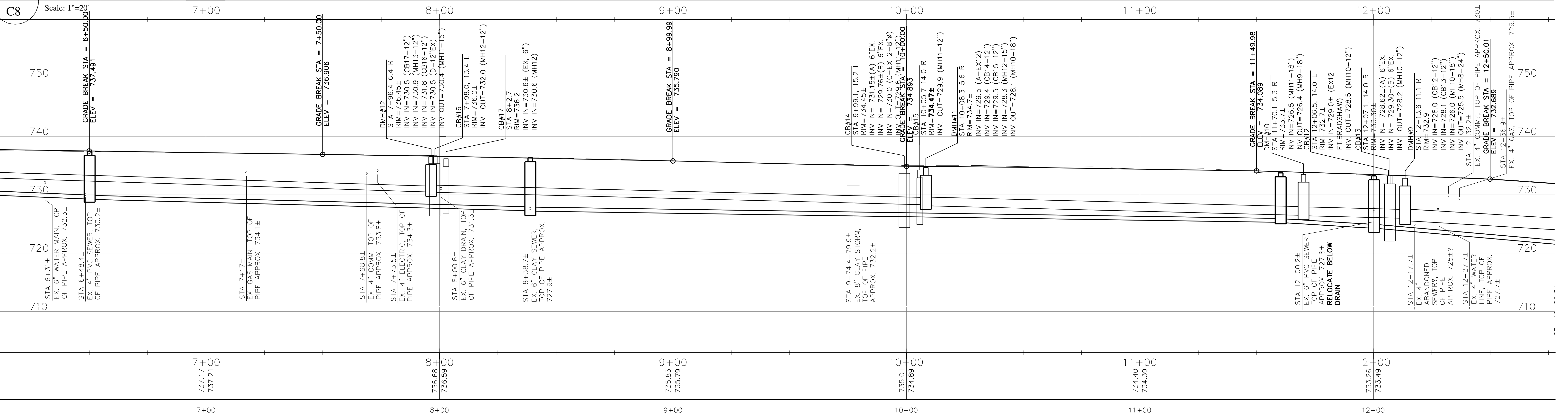
GUNTLOW & ASSOCIATES, INC.
ENGINEERS • SURVEYORS • ARCHITECTS
55 NORTH STREET
WILLIAMSTOWN, MA 01267
413-458-2198
413-458-2712 FAX

South Street Reconstruction
PREPARED FOR
Town of Williamstown
South Street, Williamstown, MA 01267

C7



1 Drainage Plan



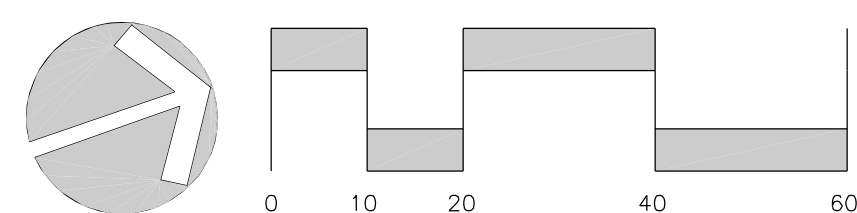
2 Profile Plan

Scale: 1"=20'

- ☆ LIGHT POLE
- ⊕ SIGN
- ⊕ UTILITY POLE
- ⊗ GAS VALVE
- ⊗ WATER VALVE
- ⊗ FIRE HYDRANT
- ⊕ DRAIN MANHOLE
- ⊕ CATCH BASIN
- ⊕ SANITARY MANHOLE

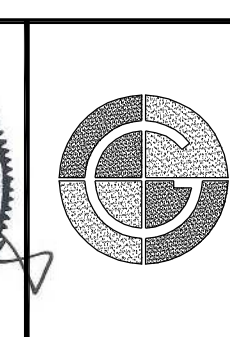
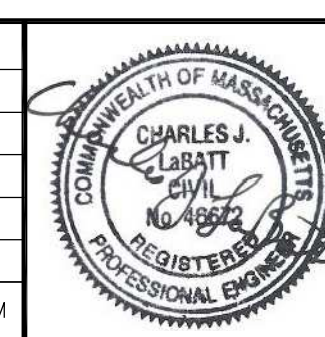
Legend

- PROPERTY LINE
- - - ONE-FOOT CONTOUR
- - - FIVE-FOOT CONTOUR
- ~ TREE LINE
- W — APPROX. WATER LINE
- G — APPROX. GAS LINE
- D — APPROX. DRAIN LINE
- S — APPROX. SANITARY LINE
- OW — OVERHEAD WIRES
- EROSION CONTROL BARRIER



Drawn By: AIC/JW		Date: 01.08.2025	
Checked By: CJL		Drawing No.: 12520	
Job No.: 0010320		Scale: 1"=20'	

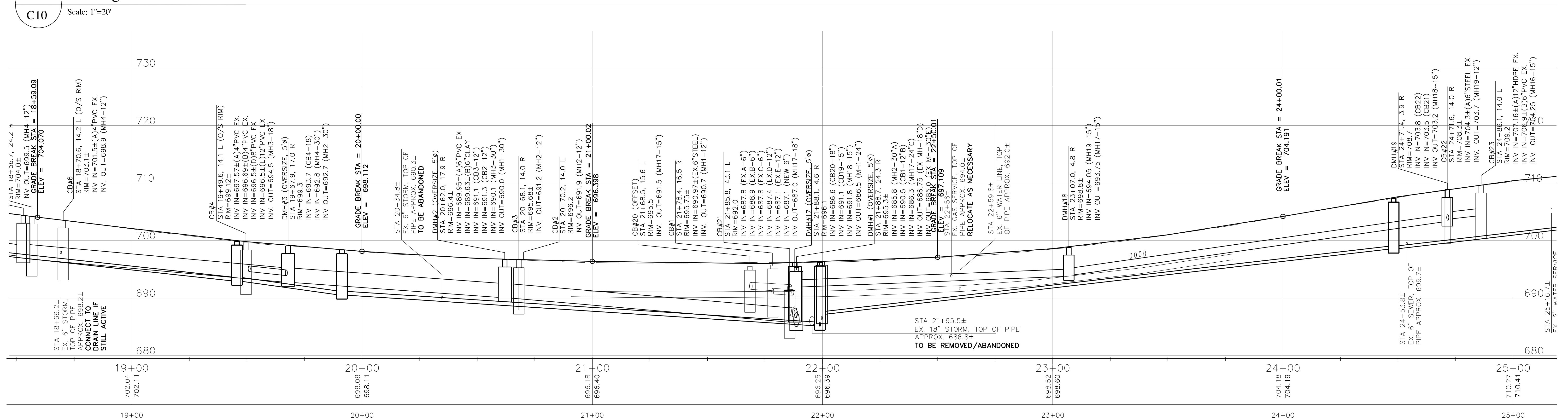
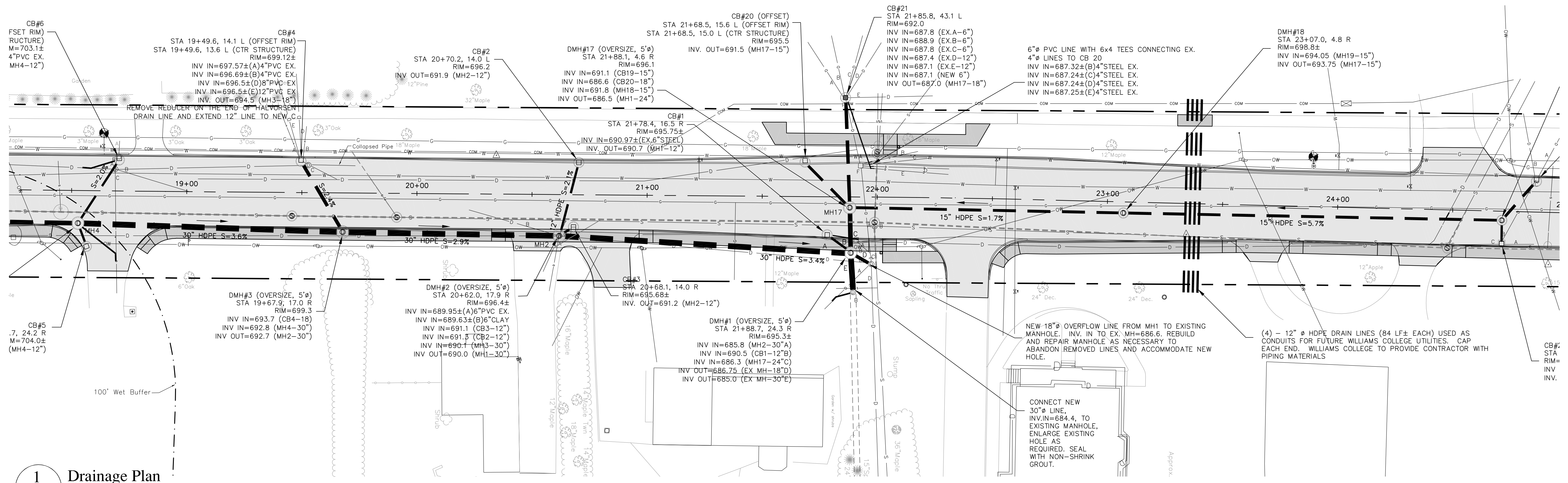
REVISIONS		
#	DESCRIPTION	DATE



GUNTLOW & ASSOCIATES, INC.
ENGINEERS • SURVEYORS • ARCHITECTS
55 NORTH STREET
WILLIAMSTOWN, MA, 01267
413-458-2108
413-458-2712 FAX

South Street Reconstruction
PREPARED FOR
Town of Williamstown
South Street, Williamstown, MA 01267

C8



2 Profile
C10 Scale: 1"=20'

Drainage Plans

DRAWN BY: AIC/JW	DATE: 01.08.2025
CHECKED BY: CUL	DRAWING NO.: 12720
JOB NO.: 0010320	SCALE: 1"=20'

REVISIONS

#	DESCRIPTION	DATE	WHOM

GUNTLOW & ASSOCIATES, INC.
ENGINEERS - SURVEYORS - ARCHITECTS

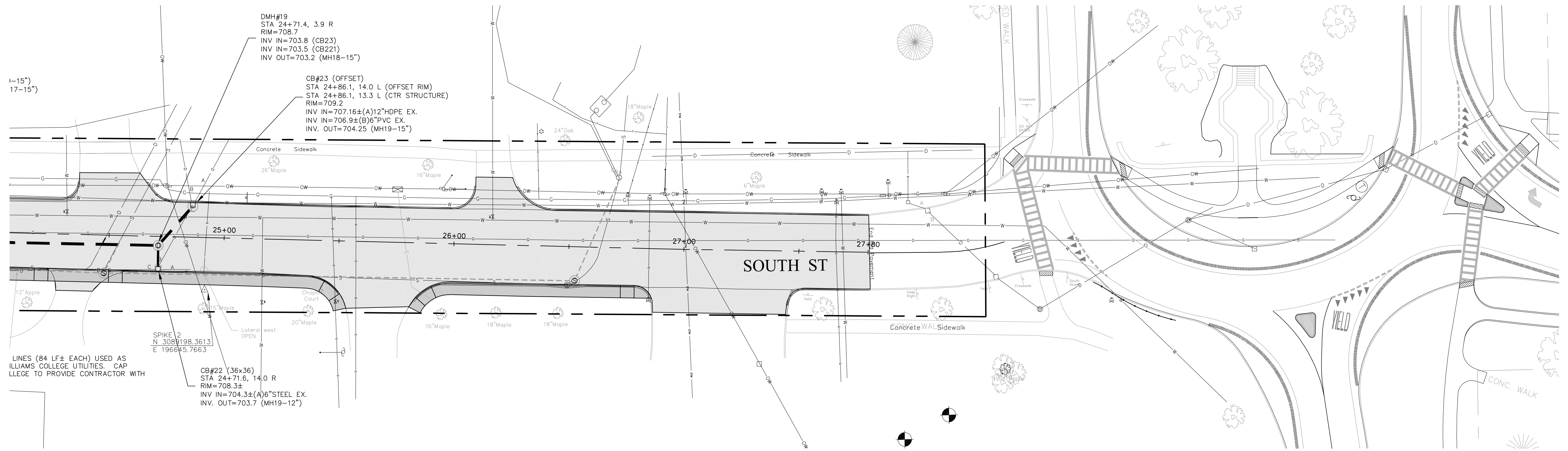
55 NORTH STREET
WILLIAMSTOWN, MA 01267
413-458-2100
413-458-2712 FAX

South Street Reconstruction

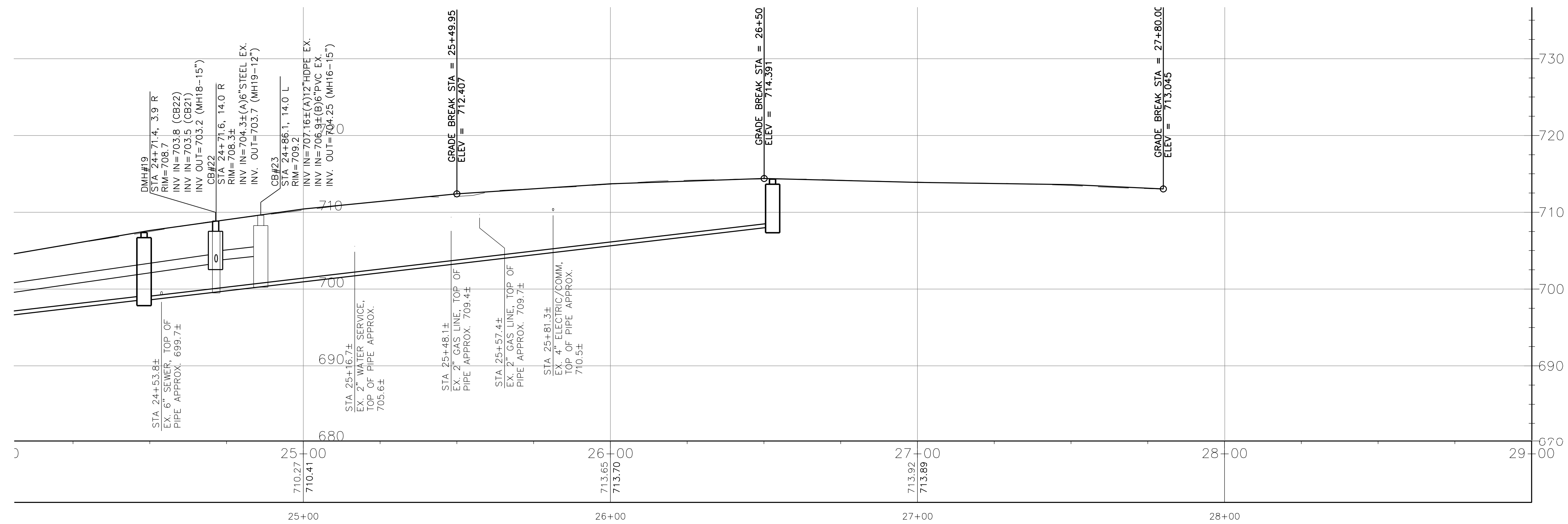
PREPARED FOR
Town of Williamstown
South Street, Williamstown, MA 01267

C10

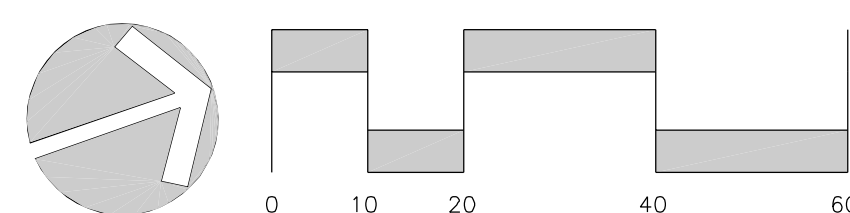
SHEET 10 OF 25



1 Drainage Plan
C11 Scale: 1"=20'

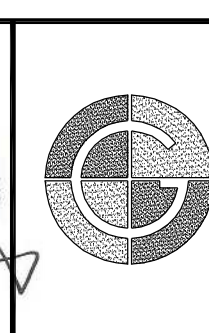
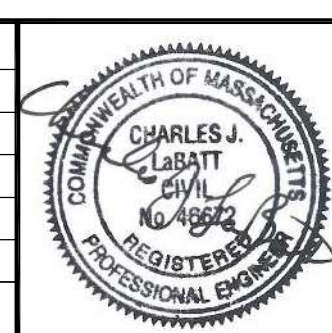


2 Profile Plan
C11 Scale: 1"=20'



Drawn By: AIC/JW		Date: 01.08.2025	
Checked By: CJL		Drawing No.: 12820	
Job No.: 0010320		Scale: 1"=20'	

Revisions			
#	Description	Date	Whom



GUNTLOW & ASSOCIATES, INC.
ENGINEERS • SURVEYORS • ARCHITECTS

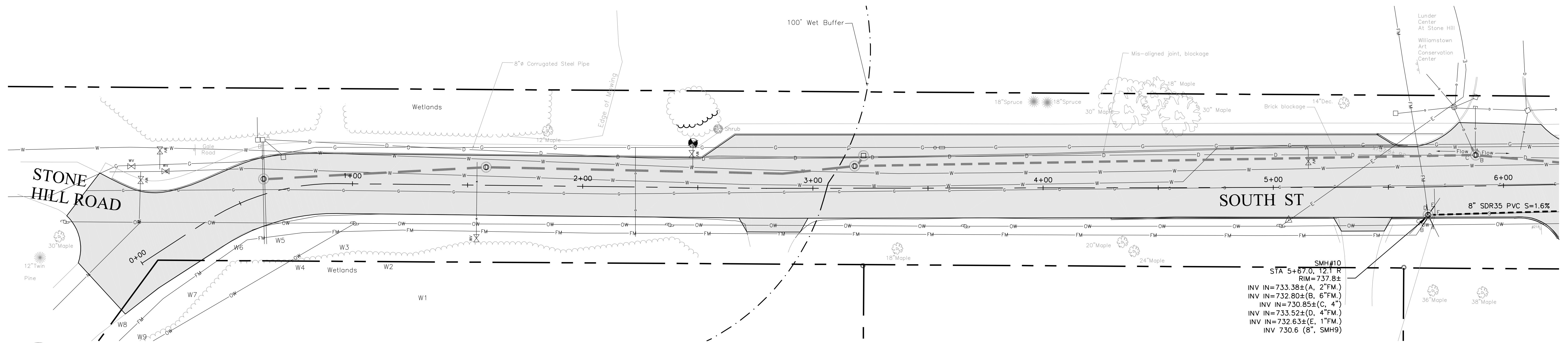
55 NORTH STREET
WILLIAMSTOWN, MA 01267
413-458-2100
413-458-2712 FAX

South Street Reconstruction

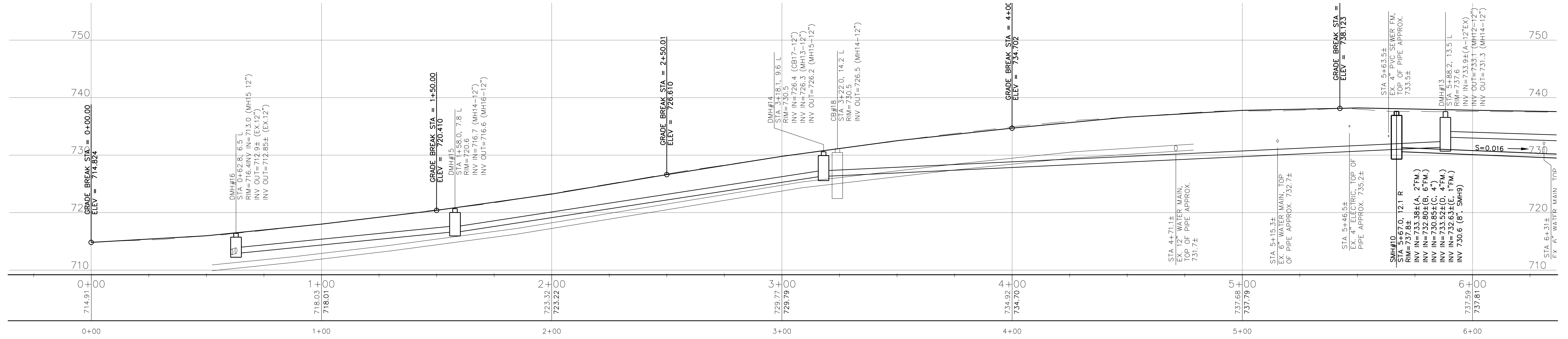
PREPARED FOR
Town of Williamstown
South Street, Williamstown, MA 01267

C11

SHEET 11 OF 25



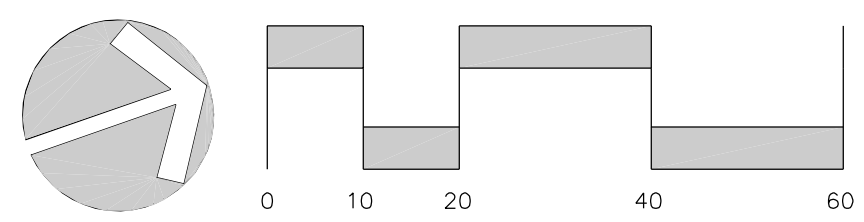
1 Sewer Plan
C12 Scale: 1"=20'



2 Sewer Profile Plan
C12 Scale: 1"=20'

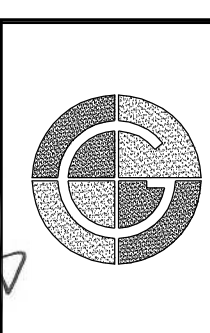
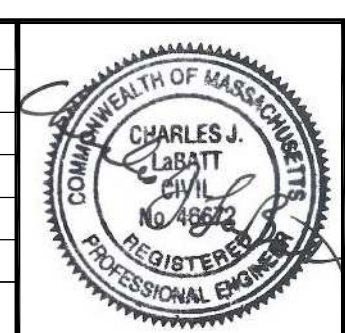
Legend

- ⊕ LIGHT POLE
- ⊕ SIGN
- ⊕ UTILITY POLE
- ⊕ GAS VALVE
- ⊕ WATER VALVE
- ⊕ FIRE HYDRANT
- ⊕ DRAIN MANHOLE
- ⊕ CATCH BASIN
- ⊕ SANITARY MANHOLE
- PROPERTY LINE
- - - ONE-FOOT CONTOUR
- - - FIVE-FOOT CONTOUR
- ~ ~ ~ TREE LINE
- W — APPROX. WATER LINE
- G — APPROX. GAS LINE
- D — APPROX. DRAIN LINE
- S — APPROX. SANITARY LINE
- OW — OVERHEAD WIRES
- EROSION CONTROL BARRIER



Sewer Plans	
DRAWN BY: AIC	DATE: 01.08.2025
CHECKED BY: C.J.L.	DRAWING NO.: 12920
JOB NO.: 0010320	SCALE: 1"=20'

REVISIONS		
#	DESCRIPTION	DATE



GUNTLOW & ASSOCIATES, INC.
ENGINEERS • SURVEYORS • ARCHITECTS
55 NORTH STREET
WILLIAMSTOWN, MA. 01267
413-458-2108
413-458-2712 FAX

South Street Reconstruction
PREPARED FOR
Town of Williamstown
South Street, Williamstown, MA 01267

C12